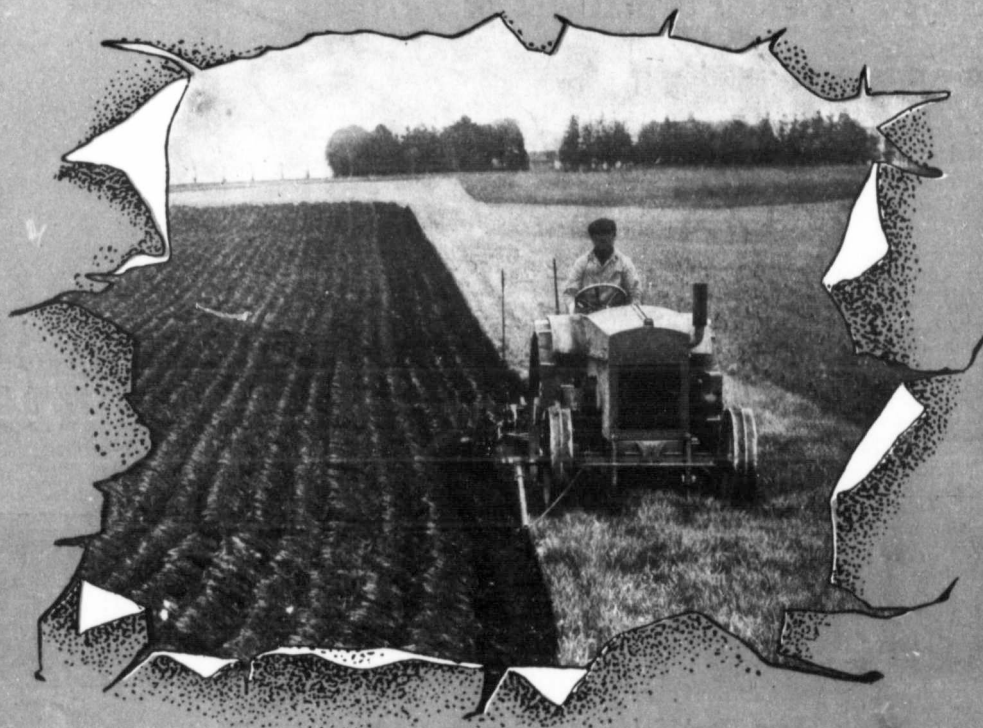


CASE 9-18



A TRACTOR SENSATION

The Case 9-18 is proving a *sensation*. These tractors are being delivered to farmers *just as fast as they can be built*. Wherever the 9-18 tractor has been demonstrated farmers have been quick to welcome it. *It has stood up under the most trying field conditions*. The 9-18 is a tractor built for *day after day, season after season service*.

With a *four cylinder valve-in-the-head Case motor* specially designed for tractor work you can rely upon this 9-18 to economically deliver *the power*. All parts are made carefully and of the *best materials* suited to its purpose. Accessibility is a special feature. All working parts are enclosed and *run in an oil bath*.

So many good features are found in the Case 9-18 that space does not permit of full description. But we want *you to know all about this tractor sensation*. So just drop a card and let us give you all the facts.

J. I. CASE THRESHING MACHINE CO., Inc.

803 Liberty St.

Racine, Wisconsin

Canadian Branches: Winnipeg, Regina, Calgary and Saskatoon.



The Sign of
Mechanical
Excellence
the World Over



The Sign of
Mechanical
Excellence
the World Over