

# ABSOLUTE SECURITY.

Genuine

## Carter's Little Liver Pills.

Must Bear Signature of

*Wm. Wood*

See Fac-Simile Wrapper Below.

Very small and so easy to take as sugar.

**CARTER'S LITTLE LIVER PILLS.**

FOR HEADACHE, FOR DIZZINESS, FOR BILIOUSNESS, FOR TORPID LIVER, FOR CONSTIPATION, FOR SALLOW SKIN, FOR THE COMPLEXION.

Fac-Simile wrapper given with each box.

**CURE SICK HEADACHE.**

## 25c BIRD TONIC FREE

Sold at 25c. But this medicine free by sending in a child's picture and a 3c Bird Tonic wrapper. Bird Tonic is a yellow pill, is full of sugar or sugarless. If dealer has none send 3c in stamps or cash or stamps for 3c. Send 3c in stamps or cash or stamps for 3c. Send 3c in stamps or cash or stamps for 3c.

**BIRD TONIC.**

Send 3c in stamps or cash or stamps for 3c. Send 3c in stamps or cash or stamps for 3c. Send 3c in stamps or cash or stamps for 3c.

**COTTAM BIRD SEED.** 18, St. Louis, Mo.

## "The YELLOWSTONE NATIONAL PARK"

Is something absolutely unique in this world. President Roosevelt. The popular route to this delightful spot is via Union Pacific to Montana, thence by stage to all points in the park.

The stage ride from Monticello, by the splendid Concord Coaches of the Montana & Yellowstone Stage Co., through scenery hardly inferior to the park itself.

Very low rates during June, July, August and September. Inquire of **F. B. ORRIDGE, G. A.,** 128 Woodward Ave., DETROIT, MICH.

## IS THERE ANYTHING THE MATTER WITH Your Eyes?

Do you have those sick headaches? If so, have your eyes examined at once. Eye strain causes headaches, by removing the cause we effect a permanent cure. Wise people realize that the proper fitting of glasses should never be guessed at. We have a skilled optician who is competent to examine your eyes and supply the needful glasses.

At the Sign of the Big Clock

## A.A. JORDAN

King Street, Chatham.

## Coal AND Wood

Order your COAL and WOOD from **J. GILBERT & CO.**

We have the best to be got and at lowest market prices. Orders promptly delivered.

OFFICE AND YARDS QUEEN ST., near C. T. R. Crossing. PHONE 119.

## The Chatham Loan and Savings COMPANY.

Capital, \$1,000,000. INCORPORATED A. D. 1884.

## Money to Lend on Mortgages

Deposits received of \$1 and upwards, and the highest current rate of interest allowed.

Debentures issued for sums of \$200 and upwards from one to five years bearing interest at four per cent. per annum half yearly.

**S. F. GARDINER,** Manager

## HOW FORESTS GROW

THERE ARE TWO GREAT TYPES, THE PURE AND MIXED.

One of the marvelous facts of Nature is the balancing of conditions where trees of different habits enter the struggle for existence.

The laws which govern the distribution of trees produce the two great types, the pure and the mixed forest. The former is the result of local conditions which trees of one kind only can survive.

In the North woods the balsam occupies the swamps, usually to the exclusion of all competitors, since no other of the native trees can thrive in wet places. In the Black Hills and other parts of the middle west the small demands of the bull pine upon moisture enable it to form pure woods on a soil too dry to support other native trees. The Jack pine of the New Jersey barrens and the long leaf pine of the southern states grow in pure or nearly pure stands since they alone can withstand the peculiar conditions of these regions.

Where climate and soil are favorable to various trees we find the mixed forest, the number of species in mixture depending upon the suitability of the locality to forest growth.

Upon the hardwood flats of the Adirondacks the hard maple, the yellow birch and the beech are the only deciduous trees able to withstand the severe climate. In the southern Appalachian forests, where the trees of the north and south meet under conditions favorable to both, we find more than 100 different kinds.

The distribution of trees, therefore, is the joint result of local conditions and of the individual and varying requirements of the different species upon moisture, soil and climate. The laws, however, which govern forest distribution are not identical with those which regulate the behavior of trees in mixture. They do not explain why each species, if undisturbed, maintains the same proportion in the mixed forest. Why does not the hard maple drive out its competitors in the Adirondacks, the oak gain the upper hand in the forests of the southern Appalachians, the red fir exterminate the western hemlock on the Pacific slope?

Wherever a mixed forest occurs there is an unending struggle going on. Let us see how the combatants are armed and why the representation of each species remains unchanged.

The more important of the characteristics which affect the capacity of a tree to hold its own in mixture with trees of other kinds are its demands upon light, its rate of growth and its power of reproduction. No two species require an equal amount of light, grow at the same rate or are identical in their capacity to reproduce themselves. The endowment of each, with habits differing from those of its neighbors, but with strength and weakness balanced so that all which occur in mixture enter the struggle for existence upon an equal footing. It is one of the marvelous facts of nature.

The spruces of the North woods, through its ability to endure dense shade, has been given the power to hold its own against faster growing competitors, some of which exceed it greatly in their capacity to reproduce themselves. The young spruces which spring up here and there throughout the forest struggle along under the heavy crowns of the hard woods, where a tree making more insistent demands upon light could not survive.

In the forests of the southern Appalachians the oak is in many localities the characteristic tree. Growing rapidly and exceedingly hardy, it might be expected to increase steadily its proportion in the mixture. The equilibrium is maintained through the fact that the oak can endure but little shade and that its seeds are heavy, limiting its reproduction to the immediate vicinity of the parent tree.

In the same region the yellow poplar and the chestnut, both trees which grow rapidly and are capable of enduring considerable shade, are controlled, the one because much of its seed is barren, the other because many of the nuts are eaten by animals. And the red cedar, of slow growth and sparse representation, is aided through the distribution of its seeds by birds, with their power to germinate unimpaired.

The aspen, short lived and requiring much light, holds its own with longer lived and shade enduring trees because its downy seed is produced in great quantities and is scattered far and wide by the wind. The ash and the basswood, of rapid growth and bearing an abundance of seed, are withheld by strong demands upon light and by the seed of a fresh and fertile soil. The red fir, equalled by few North American trees in rapidity of growth and otherwise well equipped to gain the upper hand in its region, is controlled through the usual failure of its seed to germinate except when accident has removed the leaf litter and exposed the mineral soil.

The study of trees as living, striving organisms in a world of their own leads an almost human interest in the forest. Every day spent in the woods will be the pleasant for some insight gained into what is going on within it, and an earnest observer can gain knowledge of practical value by an attempt to discover the factors which control the occurrence of trees in mixture. Forestry, which deals with the development of the highest utility of forests, means a thorough understanding of the habits of trees. Overton W. Price in Youth's Companion.

There is entirely too much time taken up every day trying to help those make up their minds who don't know what they want.

## COUNTY PARLIAMENT

The County Council resumed at 2.40.

The Finance committee presented their report as follows:

That the Commissioners' accounts be paid.

That the Clerk be instructed to order 16 copies of the Municipal Yearly Report.

That the sum of \$50 be given to each of the Agricultural Societies in the County when they have complied with all requirements in order that they may be entitled to them.

That a grant of \$10 be given to the Hospital for Sick Children at Toronto.

That no action be taken re Prisoner's Aid Association.

That a grant of \$150 to each of the municipalities of Raleigh and Dover to assist in running a free ferry at or near Prairieiding.

That no action be taken to amend a certain part of by-law No. 628.

That the following nominating officers accounts be paid: George E. Lee \$12.25, John Whittington \$15.00, A. A. Wilson \$12.74, Robinson \$15.40, F. Gifford \$15.00, Geo. McDonald \$11.00.

That Wm. Simpson's account be paid, \$1.00, for making fires and attending hall for nomination of County Council in Div. 4.

That the account of Wm. Stokes for \$10.20 for filling up approach to Jeanette's Creek bridge on the Tilbury and Raleigh Townline be paid.

That the account of the Chatham Gas Co., \$40, be paid.

That the account of J. Gossell for expenses incurred in County elections be paid, \$26.29.

That a grant of \$10 be made to the Women's Farmers Institute in West Kent.

That a grant of \$25.00 to assist in running a ferry at or near St. Peter's church.

That a grant to each of the Public Libraries in the County receiving the Government grant be \$25.00.

That in the matter of a grant to a railway down to gravel pit in Tilbury be laid over till cost of same is presented when it is completed.

That a special grant of \$100 be given to the Howard Agricultural Society, it being their fiftieth anniversary.

That in reference to a grant asked for by Commissioner Stewart for Tupperville bridge be laid over to the June session.

All of which is respectfully submitted.

H. J. FRENCH, Chairman.

On motion of Messrs. French and Hermal, the report was adopted.

The committee on Petitions and Legislation presented the following report, which was duly adopted:

That the communication from A. W. Campbell, Commissioner of Highways, be placed on file.

That the Warden and Clerk be authorized to sign the petition forwarded to this Council by the Mayor of the city of Toronto and be forwarded to the officials named in said petition.

That the communication from Mr. Hyman, acting Minister of Public Works, re dredge out from River Thames to Lake Erie be laid over for further consideration.

That no action be taken on the petition from the County Council of the County of York re speed of motor vehicles.

That the communication from the deputy Provincial Secretary in answer to a petition from this Council re sanatoria for consumptives be received and placed on file.

That the communication from the Postmaster General re free rural mail delivery be received and placed on file.

That no action be taken on the motion of Messrs. French and Brien to have the Municipal Act amended.

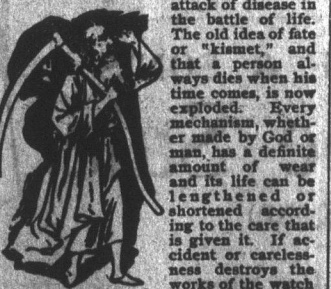
S. K. STURGIS, Chairman.

Chairman White presented a report from the Agricultural committee recommending that the report of A. J. C. Shaw re East Kent Farmer's Institute be received and filed.

The report was adopted.

## The Secret of Long Life and How to Overcome Waste.

To "know thyself" is to take advantage of life's secrets and gain the secret of an inner which will successfully resist the attack of disease.



The old idea of fate or "kismet" and that a person always dies when his time comes is now exploded. Every mechanism, whether it be a clock or a man, has a definite amount of wear and its life can be lengthened or shortened according to the care that is given it. If accident or carelessness destroys the works of the watch or the human mechanism an end comes to its usefulness, but it has not actually "worn out." Man's system at times gets rusty like the wheels of the watch and only needs a little cleaning and oiling to put it in shape for life's battles.

An imitation of nature's method of restoring waste of tissue and impoverishment of the blood and nervous force is used when you take an alternative extract of herbs and roots, without the use of alcohol, like Dr. Pierce's Golden Medical Discovery. This vegetable medicine cleans the digestive functions and helps in the assimilation of food, or rather enables the organs to take from the food just the nutriment the blood requires.

Prof. J. E. Tangany, of St. Peter Street, Quebec, writes: "I had been ill for some time with La Grippe and did not realize the danger until a week after using Dr. Pierce's Golden Medical Discovery. I was able to be around again, and I found that my system was entirely free from any of the bad effects of La Grippe. I now keep a bottle of the 'Golden Medical Discovery' on hand, and when I catch cold, take a few doses which keeps me in perfect health. As a builder up of lost strength and vitality I do not believe your 'Discovery' has an equal. Accept no substitute for 'Golden Medical Discovery.' There is nothing 'just as good' for diseases of the stomach, liver, Dr. Pierce's Pleasant Pellets, the best laxative for old people. They cure constipation and biliousness.

# We Offer \$1,000

For a Disease Germ That Liquezone Can't Kill.

On every bottle of Liquezone we offer \$1,000 for a disease germ that cannot kill. We do this to assure you that Liquezone does kill germs.

And it is the only way known to kill germs in the body without killing the tissues, too. Any drug that kills germs is a poison, and it cannot be taken internally. Medicine is almost helpless in any germ disease. It is this fact which gives Liquezone its worth to humanity; a worth so great that, after testing the product for two years, through physicians and hospitals, we paid \$100,000 for the American rights. And we have spent over one million dollars, in one year, to buy the first bottle and give it free to each sick one who would try it.

## Acts Like Oxygen.

Liquezone is not made by compounding drugs, nor is there any alcohol in it. Its virtues are derived solely from gas—large oxygen gas—by a process requiring immense apparatus and 14 days of time. This process has, for more than 20 years, been the constant subject of scientific and chemical research.

The result is a liquid that does what oxygen does. It is a nerve food and blood food—the most helpful thing in the world to you. Its effects are exhilarating, vitalizing, purifying. Yet it is an absolutely certain germicide. The reason is that germs are vegetables;

and Liquezone—like an excess of oxygen—is deadly to vegetable matter.

Liquezone goes into the stomach, into the bowels and into the blood, to go wherever the blood goes. No germ can escape it and none can resist it. The results are inevitable, for a germ disease must end when the germs are killed. Then Liquezone, acting as a wonderful tonic, quickly restores a condition of perfect health. Diseases which have resisted medicine for years yield at once to Liquezone, and it cures diseases which medicine never cures. Half the people you meet—wherever you are—can tell you of cures that were made by it.

## Germ Diseases.

These are the known germ diseases. All that medicine can do for these troubles is to help Nature overcome the germs, and such results are indirect and uncertain. Liquezone attacks the germs, wherever they are. And when the germs which cause a disease are destroyed, the disease must end, and forever. That is inevitable.

Asthma—Anemia Hay Fever—Influenza  
Bleeding—Bronchitis Kidney Diseases  
Bright's Disease La Grippe  
Bowel Troubles Liver Troubles  
Cough—Croup Malaria—Neuritis  
Consumption Pleurisy—Quinsy  
Diphtheria—Scarlet Fever  
Gastric—Cancer  
Hemorrhage—Diarrhea  
Hysteria—Dropsy  
Typhoid

German—Typhoid  
Fever—Gall Stones  
Jaundice—Gonorrhea—Gleets  
Pneumonia—Tuberculosis  
Typhus—Dysentery  
Yellow Fever—Women's Diseases

All diseases that begin with fever—all infectious diseases—all contagious diseases—all the results of impure or poisoned blood.

In a crisis of danger Liquezone acts as a vitalizer, accomplishing what no drugs can do.

## 50c. Bottle Free.

If you need Liquezone, and have never tried it, please send us this coupon. We will then mail you an order on a local druggist for a full-size bottle, and we will pay the druggist ourselves for it. This is our free gift, made to convince you; to show you what Liquezone is, and what it can do. In justice to yourself, please, accept it to-day, for it places you under no obligation whatever.

Liquezone costs 50c. and \$1.

## CUT OUT THIS COUPON

For this offer may not appear again. Fill out the blanks and mail it to The Liquezone Company, 528-54 Wabash Ave., Chicago.

My disease is.....

I have never tried Liquezone, but if.....

will supply me a 50c. bottle free I will take it.

Give full address—write plainly.

Any physician or hospital not using Liquezone will be gladly supplied for a test.

## THE STAGE

"All the world's a stage and all the men and women merely players."

## ANNOUNCEMENTS.

At the Grand—  
Marks Bros.—Jan. 30, 31, Feb. 1.  
Meister Singers—Feb. 2.  
Uncle Tom's Cabin—Feb. 3.  
Kennedy Players—Feb. 6-11.  
Pretty Peggy—Feb. 13.  
Sign of the Cross—Feb. 27.

## MEISTER SINGERS DELIGHTFUL.

Grand Opera House Feb. 2nd.  
They create a splendid impression everywhere.

Speaking of Meister Singers the critic of the London, Ont., Advertiser says:

"Never has better team work been heard than that of the Meister. Glee Singers. Not only was their intonation so perfect that every chord rang true, but they achieved in the lightest of passages, a quite remarkable resonance. Their selections were all light in character, but exceptionally well sung, good phrasing, distinct articulation, and varied expression being additional features of their singing."

"Many Jim, in face and actions, was present under the non de guerre of Roland Henry. His musical burlesques were uproariously funny, his stories equally so."

Another critic says:  
"The concert singing of the quartette was perhaps the most taking feature of the program. For tone quality, blending, articulation, and perfection of ensemble, nothing equal to the work of these gentlemen has been heard here before. From the count tenor of Mr. Sexton to the deep resonant bass of Mr. Waltham the singing was effective and delightful to listen to."

## UNCLE TOM'S CABIN.

No. 14, Al. W. Martin's "Uncle Tom's Cabin" will appear at the Grand on Friday, Feb. 3rd.

No play ever written is better known in all parts of the United States to all classes of people than "Uncle Tom's Cabin"; not even the play of immortal Shakespeare, for the play of slavery has been given in every village and hamlet in this broad country. It has been played steadily and constantly for the last half century, and it has been estimated that it is being played somewhere in this land of ours on every day in the year. Even in the South it is seen. It has developed a distinctive class of players who are called "Uncle Tommers" in derision by other actors and actresses because they spend their entire time playing the characters of "Uncle Tom." But this refers to the cheaper representations of the old play. It has been given as handsome and expensive mountings as have ever been seen in any play, and as played by the Al. W. Martin Company, the play leaves nothing to be desired, either in scenery or in players. A large company of negroes from the South are with the company and will be seen in plantation pastimes and festivities exactly as indulged in by the slaves in the anti-bellum times. All the old time glees, refrains and dances will be sung with the rich plaintive voices of the Southern negro—buckwag dancing, cake-walk and a "Voodoo Scene" showing the remarkable transition of the slave from the pathetic and pious to all absorbing worth, will be shown. Every scene used in the act acts of the drama is carried out by Mr. Martin. Every dramatic role, both black and white, being assumed by white artists of well known reputation. The role of "Uncle Tom" is in the hands of Frank Lee, the well known minstrel stage while Kittie Morgan assumes the role of Topsy, the child that never was born. The company is a large one, numbering eighty people. Two 70 foot cars being used to transport it.

In life we shall find many men that are great and some men that are good, but very few men that are both great and good.

## Exclusiveness

"Progress" Brand Clothing is, above all, exclusive.

The "Progress" way of buying direct from the mills, enables "Progress" Brand to command patterns and color schemes that "Progress" Clothing alone can show.

The "Progress" way of tailoring lends a touch of individuality—a distinctive style and elegance—that is recognized at a glance.

The "Progress" way of selling only to the leading retailers, who are financially responsible—who enjoy the confidence of the best trade—insures the wearer of "Progress" Clothing, an exclusiveness which is not obtainable in other makes.

Sold by Leading Clothiers throughout Canada.

Progress Brand Clothing is sold in Chatham by

O. AUSTIN & CO., only, Market Square, Corner of King St., Chatham, Ont.