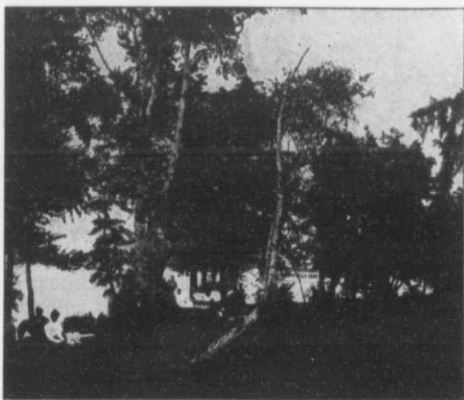


- ORILLIA -

ORILLIA is a town of five thousand inhabitants, situated in the Highlands of Ontario, on a peninsula lying between lakes Simcoe and Couchiching, which are set in this pleasant land seven hundred and fifty feet above Lake Ontario and at an altitude of one thousand feet above the level of the sea.



On the shores of Strawberry Island.

Lake Simcoe, lying at the south of the town, is a magnificent sheet of water, thirty miles long by twenty miles wide, and on which are situated many points of interest and summer resorts which are popular with the tourist. Lake Couchiching lies to the north and east of the town, and is about twelve miles long by three miles wide. It is an ideal body of water for sailing, boating and canoeing. The surface of the lake is studded with islands of such a size that there is never any danger in small boats.

Couchiching! Well may the curious tourist, struck by the peculiarity of the name, ask its meaning. Indian nomenclature is always appropriate and descriptive; here the varying breezes, welcome