

WESTWARD TO THE =FAR EAST=



UNEQUALLED ROUTE TO THE ORIENT

Across Canada — through the great western prairie lands and the world-famed scenery of the Canadian Rockies — by luxuriously equipped limited express. The scenic line across America. Train equipment modern in every detail. Then from Vancouver on the famous

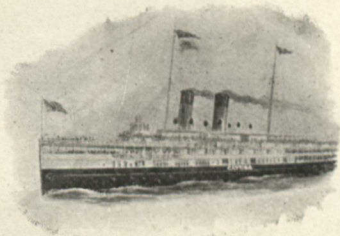
WHITE EMPRESS FLEET

three magnificent express steamships, calling at Yokohama, Kobe, Nagasaki, Shanghai and Hong Kong. Finest boats on the Pacific. Cuisine and service perfect.

Let us send you illustrated guide books of this route "Westward to the Far East," "New Highway to the Orient," etc.

Address C. B. FOSTER, District Passenger Agent C. P. R. TORONTO, ONT.

Niagara Navigation Co. (Limited)



CONNECTING

TORONTO — NIAGARA FALLS — BUFFALO

6 trips daily (except Sunday). Write for Illustrated Booklet.

B. W. FOLGER, Manager, TORONTO, CANADA

Art Electric Fixtures



THE cheapness of electric light in Toronto makes it possible to do away with old methods of lighting for the home.

☐ The cheapness of our art electric fixtures enables you to get the artistic effect you want at small cost.

☐ A visit to our art show rooms will repay you.

The Toronto Electric Light Co'y
Limited

12 Adelaide Street East

TORONTO

Canadian Northern Ontario Railway



Hunting Trip

DEER—MOOSE
BEAR
PARTRIDGE
DUCK

The Canadian Northern Ontario opens up a new country—the best hunting on the Continent. Beside Muskoka Lakes and Georgian Bay there are innumerable waterways north of Parry Sound, including the Shawanaga, Maganetawan and Still Rivers, hitherto almost inaccessible. More deer come out of this section than from the rest of Canada. Partridge, duck and small game also found in abundance.

REDUCED RATES Costs no more to go where game abounds than to where it has been hunted out. Write

C. PRICE GREEN

PASSENGER AGENT, TORONTO

for "BIG GAME HUNTING," illustrated with best maps.



"Highlands of Ontario"

The ideal Summer Resort region of America, including the following fascinating districts :

MUSKOKA LAKES

LAKES SIMCOE AND COUCHICHING

LAKE OF BAYS

MAGANETAWAN RIVER

TEMAGAMI

LAKE NIPISSING AND FRENCH RIVER

30,000 ISLANDS GEORGIAN BAY

ALGONQUIN PARK

KAWARTHA LAKES, Etc.

40,000 SQUARE MILES of
lake, river and island scenery.

1,000 to 2,000 feet above sea level. Fishing—Shooting—Canoeing—Camping. PERFECT IMMUNITY FROM HAY FEVER. Splendid train service to all districts via GRAND TRUNK RAILWAY SYSTEM.

Booklets descriptive of any of the above districts free on application to J. D. McDONALD, District Passenger Agent, Toronto, Ontario.

W. E. DAVIS
Passenger Traffic Manager
MONTREAL

G. T. BELL
Gen. Pass. and Ticket Agent
MONTREAL