

THE SPIRIT OF LOVE.

BY F. B. DOVETON.

The Spirit of Love, like a white winged Dove, Is abroad in the woods to day; In his gentle breast is a sweet unrest...

He springs at dawn with the dappled fawn From the depths of the dewy brake; He waxes the trees with the first faint breeze...

When the glades at noon, in a golden swoon, Are folded, his fair white wings May rest awhile, but we see his smile...

When the twilight pale broodeth o'er the vale, And strange sounds steal from far, He takes his flight through the purple night...

O Spirit of Love! O white winged Dove! That cleavest the deep blue air, Thy presence thrills the eternal hills...

COMMEMORATION DAY AT OXFORD.

Before 11 o'clock, I was set down at the gate by the Ashmolean Museum, where the privileged few assembled who had tickets for the "Semicircle." I was joined by Miss Browning and the Rev. B. Jowett, Master of Balliol...

Each of these modes of play may have its fascinations, which are, however, unknown to him who is too slow to keep up with the discoveries of the age...

We are informed that in playing off the tie which took place in the Vienna Tournament between Steinitz and Winawer, the former was the victor and consequently won the first prize...

up, cheer up, my boy." "The Historical Essay," by Wm. Hudson Shaw, called out doubts as to the accuracy of the statements...

The fête in Wadham Gardens was as brilliant a scene as could be imagined. This is "the Warden's territory," and never was there a lovelier sight chosen for a fête...

Robert Browning in his earliest prime, could never have looked handsomer than he looked in his scarlet gown on this occasion; and many were the eyes that followed this great poet as he walked in their midst...

"All woe, that was, Forgotten, and all terror that may be Defied."

OUR CHESS COLUMN.

All communications intended for this Column should be addressed to the Chess Editor, CANADIAN ILLUSTRATED NEWS, Montreal.

Those who are fond of novelty can find it at the present time even in the mode of playing a game of chess. There is blindfold chess, and consultation chess...

Each of these modes of play may have its fascinations, which are, however, unknown to him who is too slow to keep up with the discoveries of the age...

The first player begins the game by inserting his move in a book, which he transmits to the second player, who replies in the defence, and so on...

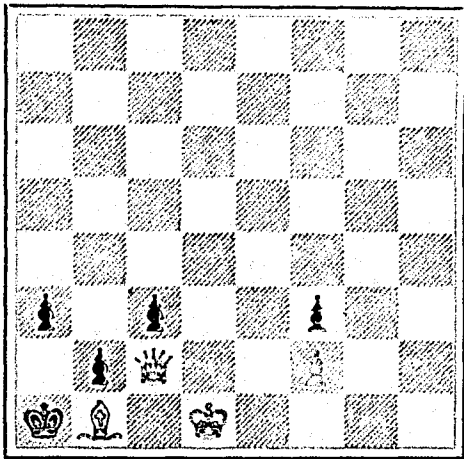
We merely give a sketch of this new manner of carrying on a game in order to show one of the innovations which are being patronized by players who are not satisfied with the time-honored mode practised by the contemporaries of Philidor and La Bourdonnais...

We are informed that in playing off the tie which took place in the Vienna Tournament between Steinitz and Winawer, the former was the victor and consequently won the first prize...

PROBLEM No. 390.

By J. Thursby.

BLACK.



WHITE.

White to play and mate in three moves.

SOLUTIONS.

SOLUTION OF PROBLEM No. 387.

- White. Black. 1. Q to Q Kt 8 1 Any 2. Mates acc

SOLUTION OF PROBLEM No. 388.

- 1. K to K B 6 1. Any 2. Mates acc.

GAME 517TH.

VIENNA TOURNEY.

(From Land and Water.)

The following fine game was played in the sixth round of the Vienna International Tournament.

(Queen's Centre Attack.)

White.—(Herr Winawer.) Black.—(Herr Tschigorin.)

- 1. P to K 4 1. P to K 4 2. P to Q 4 2. P takes P 3. Q takes P (a) 3. Q to B 3 (b) 4. Q to K 3 4. Kt to Q B 3 5. Kt to Q B 3 5. Kt to Q 5 6. B to Q 3 6. B to Q B 4 7. Q to K Kt 3 7. K Kt to K 2 8. B to K B 4 8. Kt to K 3 9. B to K 3 9. B takes B 10. Q takes B 10. Kt to K B 5 (c) 11. B to B sq 11. Castles 12. P to K Kt 3 12. Kt (B 5) to K Kt 3 13. Castles Q-side 13. P to Q R 3 14. P to K B 4 14. P to Q Kt 4 15. P to K R 4 15. P to Q Kt 5 16. Q to K 2 16. Q to K 3 17. P to K R 5 17. Kt to R sq 18. P to K R 6 18. Kt to B 4 19. Q to B 5 19. Kt takes R P (d) 20. Q takes Kt P 20. P to Q R 4 21. Q to Q 4 21. R to Q Kt sq (e) 22. Kt to Q B 3 22. R to Q Kt 2 23. Q to B 5 23. B to Q Kt 2 24. Kt to B 3 24. K R to Q Kt sq (f) 25. P to R 3 (g) 25. R takes Kt P 26. K takes R 26. B takes K P dis. ch 27. B to Kt 5 (h) 27. B takes Kt (j) 28. Q takes B P (k) 28. R to K B sq 29. K to K R sq 29. Q to K Kt 5 30. R takes Q P 30. Q takes K Kt P 31. R to Q 2 31. P to Kt 3 (l) 32. R takes R (ch) 32. K takes R 33. R to K R (ch) Resigns (m)

NOTES.

- (a) Already known from the Berlin tournament. Winifried Paulsen, we believe, was the first to practice this strong opening. (b) The Q is not well posted here. We prefer Kt to Q B 3 at once. (c) This attack, though it drives back the hostile B in reality, only loses time, for it soon helps White to the advance of his Pawn on the K side, with the attack of P to K Kt 3. (d) Q takes K P was superior, and the game might then have proceeded thus:

- White. Black. 20. P takes P 20. Q takes K P 21. R takes P (ch) 21. K takes R 22. Q takes R 22. B to Kt 2 23. Q to B 5 23. P to Q 3 24. Q to B 2 24. Q to K 6 (ch) with a good game.

(e) Herr Winawer pointed out to us the following beautiful and very deep lines of play in case Black had captured the R P. Supposing:

- White. Black. 22. Kt to Q B 3 21. Q takes R P 23. K to Q 2 22. Q R 8 (ch): if Q K 3 was had, White proceeds with B to B 4 24. R to Q Kt sq 24. Q takes P 25. Kt to Kt 5 25. Q to R 6 26. Kt to K 2 26. Q takes K Kt P: if R Q 7, the answer is R Q R sq, and if Q K 2 White simply captures Q B P with the Kt, winning a piece. 27. R to K Kt sq and wins the Q, which cannot be removed from the file, on account of the impending mate, and if Q to B 3, of course, the Q takes, and the Kt P is pinned. 28. Q to Kt 3

(f) He dare not capture the K P, on account of the rejoinder, Kt Kt 5.

(g) A bold undertaking, in face of the sacrifice which Black evidently meant to institute. Herr Winawer had clearly seen through all its consequences, and correctly calculated that he would come out with the superiority.

(h) The correct answer, which gives him the advantage in the end.

(i) Black has no time for P Q B 3, for Kt Kt 5 remains threatened.

(k) This breaks the attack at a blow.

(l) Fatal at once. Kt Kt 3 would have prolonged matters though the game was, of course, lost by proper play on the other side.

(m) White checks next with the Q E 5, then at K 7, and ultimately mates at K B 8.

Turf, Field and Farm.

In a lecture delivered at St. Louis, Governor St. John of Kansas, declared that before twenty years more roll round not a State in this Union will sanction the distilling or sale of intoxicating liquor. It may be hoped, in the interest of sobriety, that the Governor is mistaken, for it is those States where prohibition is the law that relatively drunkenness is the greatest.

40 CARDS all Chromo, Glass and Motto, in Case name in gold & jet 10c. West & Co., Westville, Ct.

THIS PAPER MAY BE FOUND ON FILE AT GEO. P. ROWELL & CO'S Newspaper Advertising Bureau (10 SPRUCE STREET), WHERE ADVERTISING CONTRACTS TRY TO MAKE FOR IT IN NEW YORK.

Cadbury's COCOA ESSENCE. PURE, SOLUBLE, REFRESHING.

It is often asked, "Why does my doctor recommend Cadbury's Cocoa Essence?" The reason is that being absolutely genuine, and concentrated by the removal of the superfluous fat, it contains FOUR TIMES the AMOUNT OF NITROGENOUS or FLESH-FORMING CONSTITUENTS of the average of other Cocos which are mixed with sugar and starch. Beware of imitations, which are often pushed by shopkeepers for the extra profit



TRENT NAVIGATION.

Notice to Contractors.

THE letting of the works for the FENELON FALLS BUCKHORN and BURLEIGH CANALS, advertised to take place on the fifth day of July next, is unavoidably postponed to the following dates:—

Tenders will be received until Wednesday, the second day of August next.

Plans, specifications, &c., will be ready for examination (at the places previously mentioned) on Saturday, the Fifteenth day of July next.

By order,

A. P. BRADLEY,

Secretary.

Dept. of Railways and Canals, } Ottawa, 24th June, 1882. }

THE COOK'S FRIEND

BAKING POWDER

Has become a HOUSEHOLD WORD in the land, and is a HOUSEHOLD NECESSITY

in every family where Economy and Health are studied. It is used for raising all kinds of Bread, Rolls, Pancakes, Griddle Cakes, &c., &c., and a small quantity used in Pie Crust, Puddings, or other Pastry, will save half the usual shortening, and make the food more digestible.

THE COOK'S FRIEND

SAVES TIME. IT SAVES TEMPER. IT SAVES MONEY.

For sale by storekeepers throughout the Dominion and wholesale by the manufacturer.

W. D. McLAREN, UNION MILLS,

55 College Street

The Scientific Canadian

MECHANICS' MAGAZINE

AND

PATENT OFFICE RECORD

A MONTHLY JOURNAL

Devoted to the advancement and diffusion of Practical Science, and the Education of Mechanics.

THE ONLY SCIENTIFIC AND MECHANICAL PAPER PUBLISHED IN THE DOMINION.

PUBLISHED BY

THE BURLAND LITHOGRAPHIC CO.

OFFICES OF PUBLICATION,

5 and 7 Bleury Street, Montreal.

G. B. BURLAND General Manager.

TERMS:

One copy, one year, including postage.....\$2.00.

One copy, six months, including postage... 1.10

Subscriptions to be paid in ADVANCE.

British American

BANK NOTE COMPANY,

MONTREAL.

Incorporated by Letters Patent.

Capital \$100,000.

General Engravers & Printers

Bank Notes, Bonds, Postage, Bill & Law Stamps, Revenue Stamps, Bills of Exchange,

DRAFTS, DEPOSIT RECEIPTS,

Promissory Notes, &c., &c.,

Executed in the Best Style of Steel Plate Engraving.

Portraits a Specialty.

G. B. BURLAND,

President & Manager