

play



Store

**RIBBONS.**  
Sh Taffeta Silk Rib-  
inches wide; colors  
Blue, Red, Green,  
White. Splendid  
suitable for hair  
Reg. 16c. per  
Price, yard **14c**

**WOMEN'S GLOVES.**  
Satin, in Black wool  
as soon as possible,  
few pairs left over  
week, these are a  
make, suitable  
wear. in Cream,  
Grey colors. Good  
per pair **54c**

**WOMEN'S HOSE.**  
Satin Hose for Fall  
wear. in Black wool  
at top; full length  
it will give satisfac-  
These are of  
unusually low fig-  
Price, per **37c**

**WIDE END TIES.**  
In assorted natural shades, made full, and  
covered with real human hair. In bunches  
containing three. Reg. 14c. bunch. **12c**  
Friday and Saturday

**HANDKERCHIEF, GLOVE,  
TIE AND COLLAR BOXES.**  
Assorted colors, covered with penhilt  
leatherette and fine art china; well made  
from good paper. Satisfaction guaranteed.  
with waterwave lining. Reg. 55c. ea. **45c**  
Friday and Saturday

**WALL POCKETS,  
TIES, ETC.**  
A magnificent assortment of very useful  
novelty goods, including watch holders, hat  
pins, ties, match holders, wall pockets, etc.;  
all nicely covered with satin or crash and  
beautifully finished with hand-painted  
flowers and flags. Reg. 30c. ea. **25c**  
Friday and Saturday

17!

ns

y

etc

y

Y

Telegram.

# PRICE INDUCEMENTS for Careful People.

Our Price Reductions are our Best Inducements.  
Our Reductions are not reductions from false, high  
marked up prices, but from the Regular Low Prices at  
which we sell goods every day  
**IT PAYS YOU TO SHOP AT THE ROYAL STORES.**

Read the Items  
Given Here for **FRIDAY AND SATURDAY**  
And Remember, Every One Represents a Decided Saving.



## Saving Chances on Boots, etc.

**INFANTS' BOOTS.**  
Of extra good quality, with solid leather soles  
and spring heels, in comfortable broad fitting  
styles with self tips. They come in Tan and  
Bronze shades, with cloth tops to match, and  
Black Gun Metal with kid tips. Are remarkable  
values at the regular price of \$1.40  
pair. Special for Friday & Saturday **\$1.29**

**WOMEN'S CLOTH TOP BOOTS.**  
New autumn styles, well worth seeing; Patent  
Leather, Gun Metal and soft Vici Kid; fairly  
high legs. They measure 9 inches, including  
heel. Reg. \$3.75 pair. Friday and Saturday **\$3.45**

## BLOUSE RETAINERS SKIRT SUPPORTERS.

They give that neat, trim ap-  
pearance to the figure that ev-  
ery up-to-date woman desires.  
Reg. 12c. each. Friday and Saturday **10c**

## PIN CUSHIONS.

Satin, Crash and lace covered  
Cotton, in various shades and  
shapes, edged with fancy silk  
cord. Hand painted and silk  
ribbon trimmed. We have never  
had so many Pin Cushions  
in stock as we have at the  
present time, nor so good val-  
ues. This line is a good ex-  
ample. Reg. 50c. each. Friday and Saturday **42c**

## WALL PAPER.

Our Wall Paper stock for this  
season comprises a world of  
new ideas in paper hangings.  
The patterns have been selected  
with unusual care. We have a  
variety suitable for any room  
and our very large and complete  
assortment and moderate prices  
will surely interest you.



## Matchless BARGAINS in GLASSWARE and CROCKERY.

White Stone Cups and Sau-  
cers. Reg. 12c.; 3 for **31c**  
White Stone Plates. Reg. 6c.  
each; 3 for **14c**  
Glass Spoon Stands. Reg. 10c.  
each for **8c**  
Glass Press Cut Pickle Dish-  
es. Reg. 17c. each for **15c**  
Printed Stone Bowls. Reg.  
19c. each for **17c**  
Toilet Sets, assorted. Reg.  
\$4.35 for **\$4.20**  
White Stone Pie Dishes. Reg.  
40c. each for **36c**  
Krysol Glass Cream Dish  
and Stand. Reg. 80c. for **72c**

## DRESS GOODS, COATINGS, Etc., Inducingly Priced.

**TWEED SUITINGS.**  
You cannot afford to overlook  
this item. A material suitable  
for Women's, Misses' and Child-  
ren's Costumes and Skirts. In  
Grey, Fawn and Green mix-  
tures, 34 inches wide. It will  
be many days before you will  
again get an opportunity like  
this. Reg. \$2.00 yd. Friday and Saturday **\$1.78**

**BLANKET CLOTH  
COATINGS.**  
Good and serviceable in de-  
sirable shades of Navy, Sage,  
Tan and crimson; 54 inches  
wide. Reg. \$2.50 yd. Friday and Saturday **\$2.10**



**CREAM  
SWANSDOWN.**  
Thick, light-weight material  
with a straight close pile. An  
ideal cloth for Children's Coats  
and Caps, or Women's and Miss-  
es' heavy Fall and Winter Coats,  
52 inches wide. Regular \$3.00  
yard. Friday and Saturday **\$2.50**

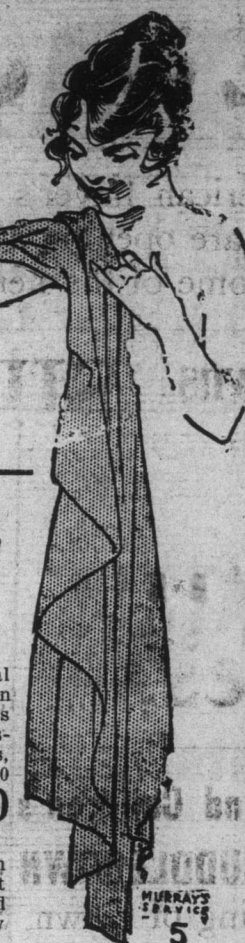
**CHECK COATINGS.**  
Black and White and Brown  
and White, in a "weight" most  
suitable for Children's and  
Misses' wear, and not too heavy  
for Women's Costumes. Excel-  
lent values; 54 inches wide.  
Reg. \$2.50 yard. Friday and Saturday **\$2.10**

## FASHIONABLE NECKLETS. PERFUMED BEAD NECKLETS.

Made from the petals of real flowers and possessing all  
the natural color and odor. They are manufactured and  
carved entirely by hand. Reg. 30c. Friday and Saturday **26c**

## PEARL NECKLETS.

Small, medium and large sizes, individually boxed;  
strong metal clips that will remain closed; also a quan-  
tity of Chain Necklets. Reg. 25c. each. Friday and Saturday **20c**



## Auto Drops Down Elevator Shaft.

One of the strangest mishaps that  
could befall a motorist was reported  
to the Gray-Dort factory, at Chatham,  
the other day, Mr. P. G. Sills, who re-  
lated this experience is Manager of  
the Premier Lumber Co. of Vancou-  
ver, wholesale dealers in Pacific Coast  
products.

"I had driven my Gray-Dort car,"  
his letter says, "for over a hundred  
miles that day, and strange to say,  
had only three or four feet still to go  
when the accident happened. I was  
driving aboard the Grand Trunk Pac-  
ific steamer "Prince Rupert" at Vic-  
toria. On the steamer there is an ele-  
vator on a level with the main deck  
used for shipping to the lower hold;  
I had driven on the elevator, and had  
the two front wheels on the deck on  
the further side, suddenly without  
any warning whatever, the elevator  
gave way, and I went down back-  
wards right to the bottom of the ship,  
past two decks—a drop I should  
think of about 25 or 26 feet. The car  
did not turn over backward as might  
have been expected with the weight  
of the engine uppermost, but just  
dropped straight down and remained  
standing perpendicular, that is, rest-  
ing only on the spare tire at the rear,  
with all four wheels in the air. It  
was quite novel, I assure you, to sit  
in the seat, hanging on to the wheel  
and gazing right straight up through  
to where all the anxious faces were  
peering down into the darkness of  
the hold of the ship, where the car  
was resting.

The car sustained no more serious  
injury, as I have discovered yet, than  
to have the mud guard bent down and  
the top rod broken.

They raised the car with a block  
and tackle during the trip, and I  
drove it off the ship."

## A Blow at Austria's Heart.

General Cadorna's latest move  
contemplates isolating Monte San Ga-  
brielle and passing on, it is no wonder  
that the Austrians are frantically  
rushing troops from France, Galicia,  
and Bukovina to stop him at all  
costs to the other front. For such a  
move on his part would mean nothing  
less than an intention to smash the  
Austrian army before the Winter  
weather begins. Heretofore, alarmed  
as the Austrians were by his success-  
es, they have doubtless been confident  
that he could do no more than  
master the Bainsizza before cold weath-  
er. That would be bad enough, but  
the Austrian Army would be in no  
positive danger before next Spring,  
and many things might happen in the  
Winter. The peace negotiations that  
are now being so skillfully organized  
by Austria and Germany, not for the  
purpose of bringing about peace so  
much as for the purpose of confusing  
the Allies and building a pacifist back-  
fire on them, might be calculated on  
by Teuton optimists to be working  
havoc with Cadorna's plans by April.  
But if Cadorna means to isolate  
Monte San Gabrielle, it means that  
he intends to be in the Chiapovano  
Valley while there is still good fight-  
ing weather. The Bainsizza Plateau  
is the last obstacle to that valley.  
Once he gets into it, he can turn and  
crush the Austrians to the south or  
the north, he can drive a wedge be-  
tween the two wings that will place  
them at his mercy. That done, he  
could drive them toward Vienna. His  
entrance into the Chiapovano Valley  
would mean that his arm was raised  
for a blow at the heart of Austria-  
Hungary.

The Austrians, though they have  
seen his object well enough for the  
last two months, counted on the  
Bainsizza Plateau to keep him busy  
until cold weather. He has got most  
of it in his possession, but he has  
still to make his way over the re-  
mainder and down over the side of  
the plateau into the valley. The  
whole Austrian effort has been con-  
centrated on holding what is left of  
the plateau, so as to keep him out of  
the fatal valley until Spring. Monte  
San Gabrielle has been the greatest  
obstacle.

But now Cadorna is manifesting a  
disposition to leave the mountain be-  
hind him instead of taking it. Since  
he could doubtless take it if he were  
willing to spend enough time in the  
enterprise, this apparent intention  
can mean only that time is important  
to him; in other words, that he means  
to get into the valley at once, regard-  
less of Monte San Gabrielle. That  
means that his contemplated effort to  
destroy the Austrian Army is sched-  
uled not for next Spring, but for this  
Fall. Germany and Austria are  
"alarmed," the despatches say. They  
would be excusable if they were  
panic-stricken.—N. Y. Times.

No fewer than 1,173 persons have  
been buried in Westminster Abbey.  
An estrich never goes to its nest in  
a direct line; it will take as many  
windings and detours as possible in  
order to conceal the spot from its ene-  
mies.

## Showroom Goods

**NEW CORSETS.**  
We have a new line of D. & A. Corsets with  
front lacing. They are the best fitting, latest  
style and most comfortable Corset on the market  
today.

**INFANTS' VESTS.**  
Fine elastic ribbed Jersey, finished at the front  
and neck with fancy crochet edging; long sleeves;  
coat fronts well stitched and lined; ties to  
fit. Reg. \$3.50. Friday and Saturday **34c**

**HAIR NETS.**  
Fringe Net of real human hair. Every one  
guaranteed perfect. Natural shades. **13c**  
Reg. 16c. each. Friday and Saturday

**VOILE and MUSLIN BLOUSES.**  
Practically every popular style in the lot. They  
are well made and finished with trimmings of  
embroidery, lace, hemstitching, scalloped edging,  
etc. Reg. \$3.25 each. Friday and Saturday **\$2.80**

**BLACK VELVET HAT SHAPES.**  
Very becoming and fashionable Hat Shapes,  
with slightly turned edge and a large round  
crown. Splendid saving chances. Reg. **\$1.25**  
each. Friday and Saturday

**WOMEN'S SWEATERS.**  
Here's a splendid wearing Sweater of pure  
wool yarns, made in a very desirable style with  
a comfortable shawl collar which can be worn  
low or buttoned closely about the neck. Khaki  
and Sage only. Reg. \$4.50 each. Fri-  
day and Saturday **\$3.90**

**POPLIN BLOUSES.**  
Well made English Poplin Blouses in splendid  
fitting styles, with self-trimmings; set-in sleeves  
and pointed collars. Shades of Sage, Brown,  
Grey, Navy, Cream and Black. Reg.  
\$2.50 each. Friday and Saturday **\$2.10**

## Marked at Unusual Low Prices.

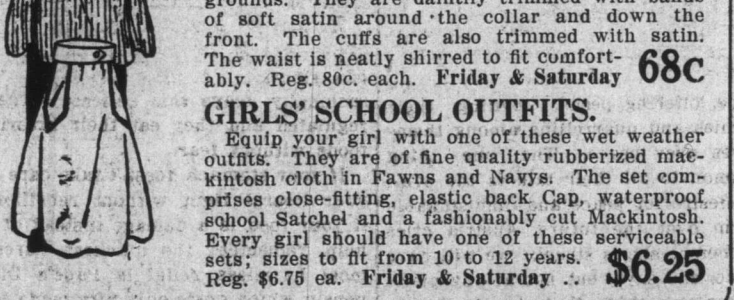
**CHILDREN'S  
IMITATION FUR SETS.**  
Stoles and Collars in various shapes with head  
bands for fastening, and pillow shaped Muffs.  
Good quality imitation fur in Grey and White  
with white twilled saten. Get yours now. This  
may be the last opportunity you will have to  
buy these sets at this low price. Reg. **\$1.30**  
each. Friday and Saturday **\$1.10**

**SKIRTS FOR STOUT FIGURES.**  
Made in our own factory from good wearing,  
serviceable materials in a very popular, plain-  
tailored style; double stitched seams, visible  
cleaning and deep hem. Reg. \$4.00. Fri-  
day and Saturday **\$3.70**

**COSTUME SKIRTS.**  
Of Black Melton Cloth in a high, waist style,  
finished with neat belt at back and large bone  
button trimmings. They are good value at the  
regular price, at the Sale Price they should at-  
tract the buyers. Reg. \$1.50 each. Fri-  
day and Saturday **\$1.60**

**WOMEN'S DRESSING JACKETS.**  
Of stout flannelette in assorted bud and floral  
effects on Hello, Pale Blue, Pink, Grey and Sage  
grounds. They are daintily trimmed with bands  
of soft satin around the collar and down the  
front. The cuffs are also trimmed with satin.  
The waist is neatly shirred to fit comfort-  
ably. Reg. 80c. each. Friday & Saturday **68c**

**GIRLS' SCHOOL OUTFITS.**  
Equip your girl with one of these wet weather  
outfits. They are of fine quality rubberized mak-  
intosh cloth in Fawns and Navys. The set com-  
prises close-fitting, elastic back Cap, waterproof  
school Satchel and a fashionably cut Mackintosh.  
Every girl should have one of these serviceable  
sets; sizes to fit from 10 to 12 years. Reg.  
\$6.75 ea. Friday & Saturday **\$6.25**



## Men's Furnishings and NOTIONS at prices that should bring you here in a hurry.

**PRESIDENT BRACES.**  
The original Shirley President Braces.  
Every pair guaranteed to give satisfactory  
service or your money back. Reg. 90c. pair. **55c**

**MEN'S PERFECTION CAPS.**  
The ideal cap for Fall and Winter wear.  
Fitted with a "deflinox" patented ear band  
of Ayred with close-fitting worked edge.  
They come in serviceable dark shades, lined  
with grey flannel. Reg. \$1.25 ea. **\$1.10**  
Friday and Saturday

**MEN'S TIES.**  
"Four-in-Hand" styles in fancy brocaded  
lustrous and plain "waterwave" silk. A big  
range of self colors. Reg. 30c. ea. **25c**  
Friday and Saturday

**MEN'S SHIRTS.**  
Speed-wearing Cottons, Percalines and Ox-  
ford checks. Some with fancy silk striped  
fronts. Undoubtedly a magnificent range of  
patterns. Values to \$2.50 each. **\$1.25**  
Special Friday and Saturday ea.

**CIGARETTE CASES.**  
Nickel plated Cigarette Cases in plain and  
fancy designs; strong spring clip for clos-  
ing and stout, detachable elastic bands for  
holding cigarettes in place. Reg. 20c.  
25c. each. Friday and Saturday **20c**

**SWAGGER STICKS.**  
All the rage with the volunteers. Dark  
oak finish; metal ends; 23 inches long.  
Reg. 17c. each. Friday and Sat-  
urday

**RUBBER  
TOBACCO POUCHES.**  
Convenient oval shapes that lie flat in the  
pocket and keep the tobacco fresh and  
sweet all the time. They come in Dark  
Brown and red. Medium sizes. **42c**  
Reg. 50c. each. Friday and Saturday

**MANHATTAN BRIAR PIPES.**  
Extra quality, guaranteed not to burn  
through. Pure rubber stems, bent or  
straight. Brough Briar Bowl. Reg. 45c.  
50c. each. Friday and Saturday **45c**

**MEN'S HALF HOSE.**  
Good wearing worsted half hose in a  
weight suitable for present wear; plain  
seamless toes and heels; closely ribbed top;  
Reg. 55c. pair. Friday and Sat-  
urday **57c**

**PURE LINEN  
CAMBRIC HANDKERCHIEFS.**  
Fine Irish manufacture, grass bleached,  
an extra good quality with a neatly woven  
border. Size 20 x 21 inches. Reg.  
15c. each. Friday and Saturday **8c**



## HOUSE FURNISHING BARGAINS. Ten Specially Priced Items for Friday and Saturday.

**CURTAIN FRINGE.**  
Soft union fringe in two tone shades, with  
wool balls 1 1/2 inches apart. These materi-  
als are very hard to get. So this is an op-  
portunity that should mean instant action  
on the part of every one in need of this  
class of goods. Red and Gold, and Green  
and Gold only. Reg. 17c. yard. **14c**  
Friday and Saturday

**FACE CLOTHS.**  
Made from thickly looped American tow-  
el cotton in a pure, soft quality. Finished  
with blue overworked edging; medium size.  
Reg. 5c. each. Friday and Satur-  
day **4c**

**SIDEBOARD CLOTHS and  
DUCHESS SETS.**  
Lace and Insertion trimmed in several  
beautiful designs. Fine quality English  
Cotton forms the foundation. Reg.  
55c. each. Friday and Saturday **45c**

**CUSHION COVERS.**  
Cream linen, embroidered with silk in  
very pretty contrasting and blending  
shades; also tapestry in Oriental designs  
of various colors and good quality set-  
ten backs. Reg. 35c. each. Friday and  
Saturday **30c**

**TABLE CENTRES.**  
With embroidered centers in handsome  
designs and color combinations, worked on  
soft brown linen. Size 18 x 18 inches.  
Reg. 50c. each. Friday and Sat-  
urday **40c**

**SCRUB CLOTHS.**  
Made from Blay Cotton in a very coarse  
thread; very soft and absorbent. Size  
18 x 22 inches. Reg. 8c. each. Friday  
and Saturday **6c**

**EIDERDOWN QUILTS.**  
Covered with fine saten in beautiful art  
patterns with stripes of plain, saten in  
shades to match. Insure yourself and fam-  
ily against the chilly nights to come by  
getting some of these light weight comfort-  
ers. Reg. \$8.50 each. Friday  
and Saturday **\$7.50**

**CURTAIN NETS.**  
Choice new goods with fine centres and  
heavy scroll borders, 92 inches wide. White  
only. Reg. 25c. yard. Friday and **25c**  
Saturday

**BLEACHED TABLE DAMASK.**  
Snowy White Table Damask of a fine  
quality that will give great wear. Several  
designs to choose from; 58 inches wide.  
Reg. 65c. yard. Friday and Sat-  
urday **60c**

**GLASS CLOTHS.**  
Plain White, with the words "Glass  
Cloth" woven in the borders. Size 21 x 22  
inches. Made from soft union materials.  
Reg. 15c. each. Friday and Sat-  
urday **12c**

**TABLE CENTRES.**  
With embroidered centers in handsome  
designs and color combinations, worked on  
soft brown linen. Size 18 x 18 inches.  
Reg. 50c. each. Friday and Sat-  
urday **40c**

**SCRUB CLOTHS.**  
Made from Blay Cotton in a very coarse  
thread; very soft and absorbent. Size  
18 x 22 inches. Reg. 8c. each. Friday  
and Saturday **6c**

# The Royal Stores Ltd.