

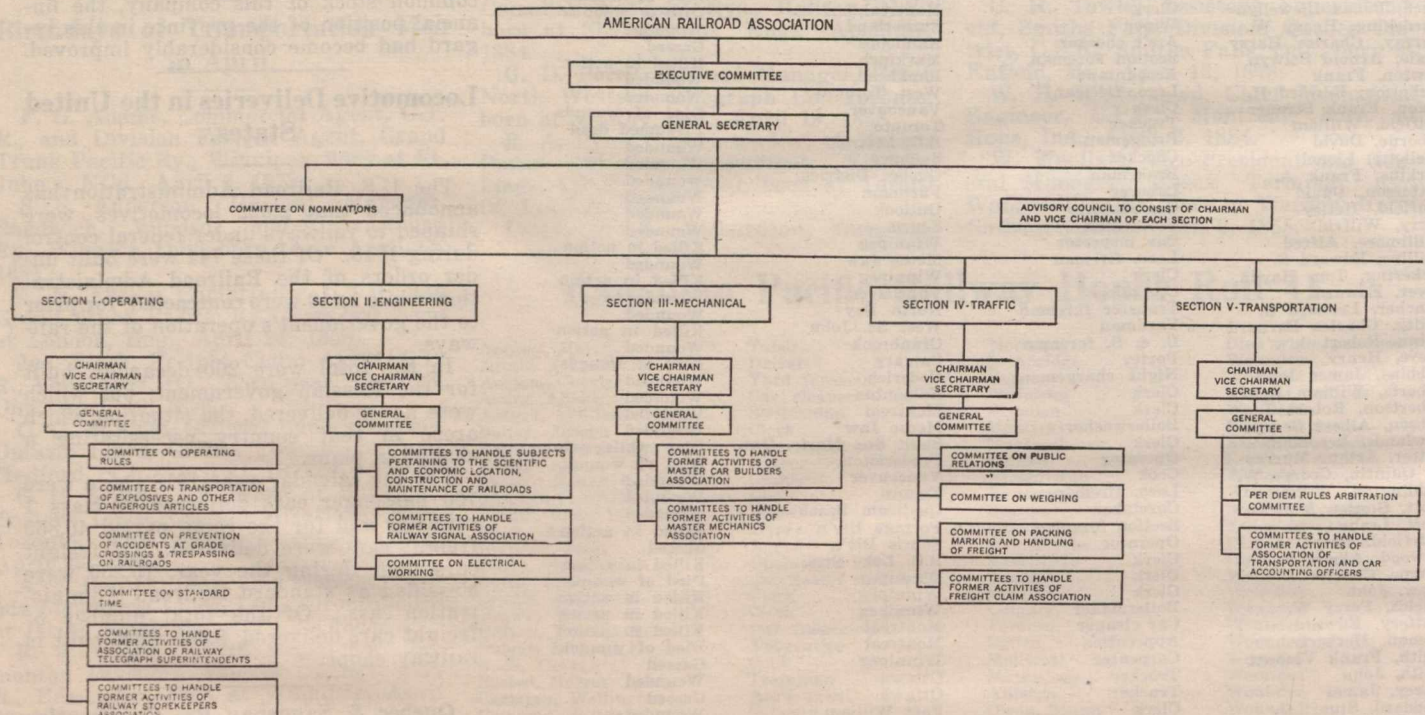
Amalgamation of Railway Associations as the American Railroad Association.

The Director General of United States Railroads issued the following circular recently:—To provide, during the period of Federal control, a responsible channel through which the Director General may obtain recommendations for the advancement of railway practice, the American Railway Association has revised its articles of organization and by-laws and will change its name to the American Railroad Association. The scope of the association has been enlarged and will cover the former activities of the American Railway Association, American Railway Master Mechanics' Association, Association of Railway Telegraph Superintendents, Association of Transportation and Car Accounting Officers, Freight Claim Association, Master Car Builders' Association, Railway Signal Association, Railway Storekeepers' Association, and will consist of five sections, viz.: 1—Operating, 2—Engineering, 3—Mechanical

the executive committee. The executive committee has also appointed the following temporary general committees for each of the sections:

Section 1.—Operating.—W. J. Fripp, General Manager, New York Central Rd. (Chairman); J. H. Young, Senior Assistant Director, Division of Operation, U.S. Railroad Administration; C. G. Burnham, Federal Manager, Chicago, Burlington & Quincy Rd.; A. D. MacTier, Vice President, Eastern Lines, Canadian Pacific Ry.; R. E. McCarty, General Manager, Pennsylvania System, Lines West of Pittsburg; C. L. Bardo, General Manager, New York, New Haven & Hartford Rd.; M. H. Clapp, Manager, Telegraph Section, U. S. Railroad Administration; J. F. Caskey, Superintendent of Telegraph, Lehigh Valley Rd.; G. G. Yeomans, Member, Advisory Committee, Purchasing Section, Division of Finance and Purchases; E. J. Roth, Manager, Stores Sec-

chical Director, Mechanical Department, Division of Operation, U.S. Railroad Administration; C. B. Young, Manager, Inspection and Test Section, Division of Operation, U.S. Railroad Administration; F. F. Gaines, Chairman, Board of Railroad Wages and Working Conditions, U.S. Railroad Administration; T. H. Goodnow, Superintendent Car Department, Chicago and North Western Rd.; H. R. Warnock, General Superintendent Motive Power, Chicago, Milwaukee and St. Paul Rd.; J. E. O'Brien, Mechanical Superintendent, Missouri Pacific Rd.; A. P. Prendergast, Mechanical Superintendent, Texas and Pacific Rd.; J. W. Small, Mechanical Assistant, Regional Director, Southern Region, U.S. Railroad Administration; C. F. Giles, Superintendent of Machinery, Louisville and Nashville Rd.; W. J. Tollerton, General Mechanical Superintendent, Chicago, Rock Island and Pacific Rd.; C. E. Fuller, Superintendent Motive Power and Machinery, Union



cal, 4—Traffic, 5—Transportation. Railways under Federal control are members of the association and are directed to be represented and participate in the activities of each section through their proper officers.

The accompanying diagram shows the plan of the new organization. In referring to the change of circular used the American Railroad Association says:

"The membership of the railways now members of The American Railway Association is not affected and their status is not changed. It is desirable that all railways now members of any of the organizations to be amalgamated with the American Railway Association, if membership is not now held therein, should assume membership in the American Railroad Association, which will afford mutual discussion and consideration, by the railways under Federal control and those which are not, of methods for the scientific and economical construction, maintenance and operation of American railways."

Tentative rules of order for each of the five sections of the American Railroad Association have been approved by

tion, Division of Finance and Purchases, U.S. Railroad Administration.

Section 2.—Engineering.—Earl Stimulation of Way and Structures, Baltimore & Ohio Rd. (Chairman); C. A. Morse, Assistant Director, Engineering and Maintenance Department, Division of Operation, U.S. Railroad Administration; H. R. Safford, Engineering Assistant, Central Western Region, U.S. Railroad Administration; C. F. W. Felt, Chief Engineer System, Atchison, Topeka & Santa Re Rd.; R. S. Parsons, Chief Engineer, Erie Rd.; J. A. Atwood, Chief Engineer, Pittsburg & Lake Erie Rd.; Geo. Gibbs, Chief Engineer of Electric Traction, Long Island Rd.; E. B. Katte, Chief Engineer of Electric Traction, New York Central Rd.; R. E. Trout, Signal Engineer, St. Louis-San Francisco Rd.; W. H. Elliott, Signal Engineer, New York Central Rd.; F. P. Patenall, Signal Engineer, Baltimore & Ohio Rd.

Section 3.—Mechanical. C. E. Chambers, Mechanical Assistant to Regional Director, Allegheny Region, U.S. Railroad Administration (Chairman); Frank McManamy, Assistant Director, Me-

Pacific Rd.; I. S. Downing, General Master Car Builder, Cleveland, Cincinnati, Chicago and St. Louis Rd.; J. S. Lentz, Master Car Builder, Lehigh Valley Rd.; J. R. Gould, Superintendent Motive Power, Chesapeake and Ohio Rd.; A. Kearney, Superintendent Motive Power, Norfolk and Western Rd.; M. K. Barnum, Assistant to General Superintendent Maintenance of Equipment, Baltimore and Ohio Rd.; Jas. Coleman, Superintendent Car Department, Grand Trunk Rd.; W. H. Winterrowd, Chief Mechanical Engineer, Canadian Pacific Ry.

Section 4.—Traffic. R. C. Wright, Assistant Director, Division of Traffic, U.S. Railroad Administration, (Chairman); Traffic Assistants of the seven regional directors of the U.S. Railroad Administration; J. H. Howard, Manager, Claims and Property Protection Section, Division of Law, U.S. Railroad Administration; H. C. Pribble, General Claim Agent, Atchison, Topeka and Santa Fe Rd.; H. C. Howe, Freight Claim Agent, Chicago and North Western Rd.

Section 5.—Transportation. George Hodges, Chairman; C. M. Sheaffer, General Supt. Transportation, Penn-