



Length, 425 feet.

Height, 115 feet.
Capacity: 200,000 Barrels a year.

Depth, 120 feet.

THE FRONTENAC BREWERIES, the finest, largest and best equipped in Canada

Convinced that the time has come for Canada to possess a large, modern Brewery, equipped for the production of beer to equal the best imported beers—a group of Canadian business men—after devoting three years of study and effort—helped by experts and with large Capital at their disposal—have erected and equipped the monumental brick, steel and cement brewery buildings, located opposite Mile End Station—which will be known as

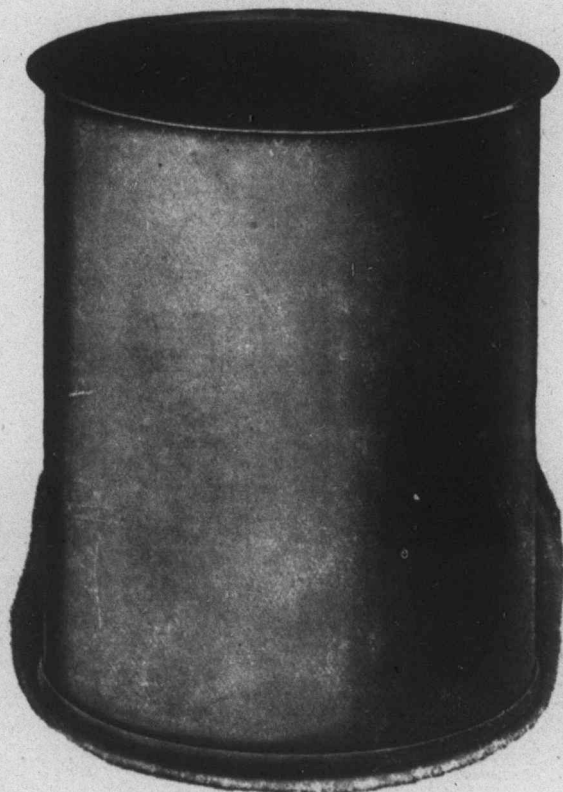
THE FRONTENAC BREWERIES

This model Brewery, in charge of expert brewers, now produces

FRONTENAC BEER

The Peer of the best imported Beers. Domestic in price—Imported in quality.
Frontenac Beer on sale October 21st.

THE FRONTENAC BREWERIES LIMITED, MONTREAL



Sanitary Cans

“The Can of Quality”

Tomatoes, Peaches, Pears,
Plums, Apples.

Enamel Lined Cans for Straw-
berries, Raspberries, Beets.

Sanitary Can Co., Ltd.,

NIAGARA FALLS, ONT.