

SEED CORN

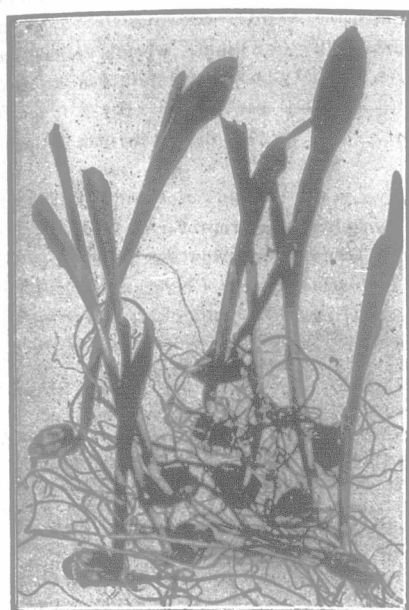


Photo showing strong growth.

These photos are of two germination tests of the same variety of Seed Corn, put in the germinator side by side on the same day and taken out together.

You will notice they both germinated 100%, but the one shows very strong vitality. This strong growth is entirely due to the care in harvesting and storing of the Corn. This lot that shows such strong vitality has never been touched by frost. It is fire-dried on the cob. We can supply you with this grand, strong, vigorous Corn.

WISCONSIN, No. 7, on the cob (70 lbs. to the bushel).

IMPROVED LEAMING, on the cob (70 lbs. to the bushel).

\$3.00 per Bushel, Bags Free.

The lower photograph shows the same Corn, harvested and stored in cribs, the ordinary way. You will note that the life in it is very weak and conditions would have to be most favorable to further growth.

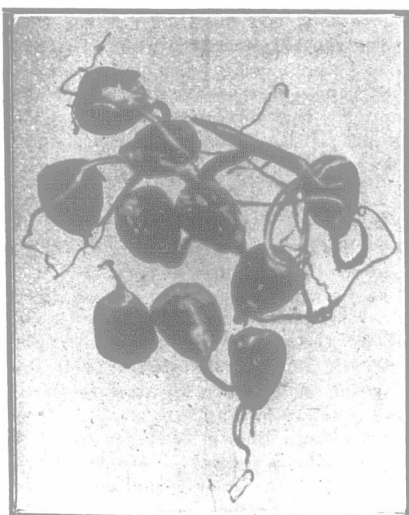


Photo showing weak growth.

Geo. Keith & Sons

Seed Merchants since 1866
124 KING ST. E., TORONTO

TRADE MARK
Ploughs—Wilkinson
REGISTERED

U. S. S. Soft Centre Steel Moldboards, highly tempered and guaranteed to clean in any soil. Steel beams, steel landings and high carbon steel coulters. Clevises can be used either stiff or swing. Each plough is fitted especially with its own pair of handles—rock elm, long and heavy and thoroughly braced. The long body makes it a very steady running plough. Shares of all widths—specials for stony or clay land. The plough shown turns a beautiful furrow, with minimum draft and narrow furrow at finish. Ask for catalogue.

The Bateman-Wilkinson Co.,
411 Limited
Campbell Ave.,
Toronto, Canada.



TWO HOURS OF YOUR SPARE TIME

and 25c. will get you the best \$4.00 pair of shoes for man or women ever made. Write for particulars to the Brantford Shoe Company - Brantford, Ontario

Gossip.

Attention is called to the advertisement in this issue of the Chatham Malleable and Steel Mfg. Co., Chatham, Ontario. Look into their "All-Steel Line" before purchasing stalls and stanchions.

In the report of the stock yard's consignment sale, the purchaser of the highest priced mare was given as J. Goodall, when, as Mr. Franklin informs us, it should have been Mr. J. Franklin, Joyceville.

At their barns on the market square, Chatham, Ont., on Saturday, April 5th, as advertised, McGarvin Bros. will sell at auction, registered Percheron stallions, mares in foal, colts, and fillies; also a number of grade mares and geldings. If interested, write for catalogue.

D. M. Watt, St. Louis Station, Que., breeder and importer of Ayrshire cattle, sailed from Portland, March 20th, on the Parisian, for Scotland, to make an importation of 35 head of selected Ayrshires, 6 Scotch Highland cattle, and 20 Highland sheep, for the Alta Crest Farms, Spencer, Mass.

A 212-acre farm of rich clay, with 200 acres under good cultivation, with 11-room brick house, a 60 x 90 hip-roof barn, with basement stables, situated alongside the corporation of the town of Bradford, Ont., a station forty miles north of Toronto, on the G. T. R., is advertised in this issue for sale. Address, Drawer 276, Bradford, Ont.

Dr. F. Torrance, V. S., Veterinary Director General, informs "The Farmer's Advocate" that the Ministerial Order of December 24th, 1912, prohibiting the importation of hay, straw fodder, feedstuffs or litter accompanying horses from Great Britain, has been renewed for a further period of three months from March 24th.

The Farmers' Feed Co., Ltd., Toronto, Ontario, have a large advertisement on another page, which is worthy of attention of all those interested in the feeding of dairy cattle and horses. Pro-fat Molasses Meal has been given a thorough test by the manufacturers on some well-known farms. See this firm's great trial offer in the ad. in another column.

W. B. Annett, Alvinston, Ont., importer and breeder of Clydesdale and Shire horses, and Welsh ponies, reports the recent sale to D. L. Thomson, St. Mary's, Ont., the good breeding stallion, Sir Edmund (11192) (imp.), a son of Sir Everard, the sire of the renowned Baron's Pride, and his dam was by Prince of Albion, by Prince of Wales (673). Sir Edmund is described as a very fine, big specimen of a Clydesdale draft horse, weighing considerably over a ton, standing on the best of feet and pasterns, and had proved himself a very sure foal-getter, and an extra good breeder. The breeders in St. Mary's district may consider themselves fortunate in having the opportunity of breeding to such a high-class horse.

Boys are not alone in their spirit of bragging about the distinguished qualities of "Dah." A number of little girls were boasting of the ranks of their respective families. They had passed from clothes to personal appearance, then to interior furnishings, and finally came to paternal dignity. The minister's little girl boasted:

"Every package that comes for my papa is marked D. D."

"And every package that comes for my papa is marked M. D.," retorted the daughter of the physician.

This was followed by a look of contempt from the youngest of the party. "Huh!" she exclaimed, with nice disdain. "Every package that comes to our house is marked C. O. D.!"

Pro-fat Molasses Meal

(75% Dried Malt, 25% Pure Cane Molasses)

The wonderful results obtained by the large dairies and dairy-men around Toronto by feeding our Pro-fat dairy feed has led this company after many requests from dairymen to add 25 pounds of pure Cane Molasses to each 75 pounds of Pro-fat. The result being a molasses meal without an equal, as the following guaranteed analysis will show:—Protein 20%, Fat 5%, Fibre 13%. Compare this with other molasses meals offered to the public and it will leave no doubt in your mind as to the truth of our claim. After a test at the T. Eaton Company's Farm, Georgetown and other Dairy Centres, we have decided (in order to introduce this meal) to make the following proposition to Dairymen throughout the province:—

30 Days' Trial

We will ship on thirty days' trial, freight paid, one ton of Pro-fat Molasses Meal to any responsible dairyman in the Province of Ontario with an absolute guarantee (fed pound for pound in place of other meal or concentrates) to produce more and richer milk for less money. If it fails to do this there will be no charge for the meal. If it is all we claim for it, the charge will be \$1.40 per hundred or \$28.00 for the ton. Dairymen who have recognised the value of Cane Molasses for dairy herds have an opportunity here of trying a genuine molasses meal of real merit without running any risk whatever. It is the only molasses meal endorsed by the authorities of the O. A. College Guelph. Send your orders in or write to us for more particulars if you have any doubt about this offer. This meal is equally good for horses, no dairyman can afford to be without it. Write for list of dairymen who have already used it.

Feed Pro-fat Molasses Meal and Watch the Milk Flow Increase

THE FARMERS FEED CO., LIMITED,
DEPT A., 108 Don Esplanade, TORONTO, ONT.

Dispersal Sale of Shorthorns

The Shorthorn Herd of the Maitland Bank Stock Farm being one of the oldest Shorthorn Herds of milking strains in Western Ontario consisting of Bulls, Cows and Young Heifers, 32 head from the following families, viz.: Campbell Bessie; Campbell Rose Buds; Campbell Clarets; Marr's Beauties and Marr Rachels will be sold by Public Auction on

Tuesday, April 1st, 1913

Commencing at 12 o'clock noon

TERMS: All sums under \$10 cash, over that amount nine months' credit on approved Joint Notes; Five per cent. off for cash.

Sale positively without reserve.

Auctioneers—S. F. Scott & Capt. T. E. Robson.
DAVID MILNE, Proprietor, Ethel P. O., Ont.

Registered Percherons at Auction

At their Barns on the Market Square, Chatham, Ont.
On Saturday, April 5th

Messrs. McGARVIN BROS. will sell at auction, registered Percherons, consisting of Stallions, from weanlings to horses ready for service; and Mares, from weanlings to some in foal. Also a number of grade mares and geldings.

Any one interested can get their catalogue by writing

McGarvin Bros., - 40 Market Square, Chatham