

WESTWARD TO THE =FAR EAST=



UNEQUALLED ROUTE TO THE ORIENT

Across Canada — through the great western prairie lands and the world-famed scenery of the Canadian Rockies — by luxuriously equipped limited express. The scenic line across America. Train equipment modern in every detail. Then from Vancouver on the famous

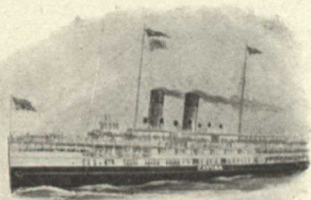
WHITE EMPRESS FLEET

three magnificent express steamships, calling at Yokohama, Kobe, Nagasaki, Shanghai and Hong Kong. Finest boats on the Pacific. Cuisine and service perfect.

Let us send you illustrated guide books of this route "Westward to the Far East," "New Highway to the Orient," etc.

Address C. B. FOSTER, District Passenger Agent C. P. R. TORONTO, ONT.

Niagara Navigation Co. (Limited)



CONNECTING

TORONTO — NIAGARA FALLS — BUFFALO

6 trips daily (except Sunday). Write for Illustrated Booklet.

B. W. FOLGER, Manager, TORONTO, CANADA

Going to the States?

If so, see that your ticket
reads via the

Michigan Central

"The Niagara Falls Route"
Between the

EAST and WEST

(Through Canada between Detroit and Buffalo)



"AMERICA'S GREATEST
RAILWAY SYSTEM"

THROUGH CAR SERVICE

BETWEEN

Toronto and Buffalo

In connection with C. P. R. and T. H. & B. Ry.

For information Address C. H. CHEVEE, General
Eastern Passenger Agent, Buffalo, N. Y.

W. J. LYNCH - Passenger Traffic Manager, Chicago
O. W. RUGGLES - General Passenger Agent, Chicago



THE LAKE SHORE EXPRESS

FAST TRAIN
FOR

MUSKOKA LAKE

Leaves Toronto 10 a.m.

Connecting at Bala Park and Lake Joseph with Muskoka Nav. Co. Steamers arrive Beaumaris 2.15 p.m., Port Cockburn 3.00 p.m., Port Sandfield 3.30 p.m., Royal Muskoka 4.30 p.m.; other points in proportion.

OFFICES:

Corner King and Toronto Sts. and Union Station, TORONTO
Main 5600-5179



"Highlands of Ontario"

The ideal Summer Resort region of America,
including the following fascinating districts:

MUSKOKA LAKES

LAKES SIMCOE AND COUCHICHING

LAKE OF BAYS

MAGANETAWAN RIVER

TEMAGAMI

LAKE NIPISSING AND FRENCH RIVER

30,000 ISLANDS GEORGIAN BAY

ALGONQUIN PARK

KAWARTHA LAKES, Etc.

40,000 SQUARE MILES of
lake, river and island scenery.

1,000 to 2,000 feet above sea level. Fishing—Shooting—Canoeing—Camping. PERFECT IMMUNITY FROM HAY FEVER. Splendid train service to all districts via GRAND TRUNK RAILWAY SYSTEM.

Booklets descriptive of any of the above districts free on application to J. D. McDONALD, District Passenger Agent, Toronto, Ontario.

W. E. DAVIS
Passenger Traffic Manager
MONTREAL

G. T. BELL
Gen. Pass. and Ticket Agent
MONTREAL