

THE EVENING TIMES-STAR, ST. JOHN, N. B., SATURDAY, SEPTEMBER 1, 1923

## DRANK 3 QUARTS OF WHISKEY DAILY

Sutphen, New York Suicide, Spent About \$75,000 a Year.

New York, Aug. 31.—John H. Sutphen, aged 88, who was found dead of cyanide poisoning early Sunday at his apartment at 388 Central Park West, killed himself when financial difficulties overwhelmed him, and for the additional reason that he knew, because of his prolonged and heavy drinking, he had only a short time to live. Sutphen's death was put down definitely last night by James J. Wilson, Assistant District Attorney, as suicide.

For five years Sutphen had been known as one of the most lavish spenders, as well as one of the heaviest drinkers, in the White Light District. Two and three times a week, sometimes oftener, he gave parties which cost him large amounts. At one cabaret party within the month, Mr. Wilson learned, Sutphen spent \$400 for wine. On another occasion he gave an orchestra leader a \$40 tip to repeat "Yes, We Have No Bananas."

Mr. Wilson said the estimate of \$20,000 a year as the rate at which Sutphen threw away money was entirely too low. The figure, he said, probably should be nearer \$75,000 a year.

Sutphen was a private secretary and

confidential adviser to George Helme, wealthy tobacco merchant. This job paid him \$12,000 a year. In addition Sutphen was interested in manufacturing and promotion enterprises.

His Best Friend.

Mrs. Margaret Helme, mother of the tobacco merchant, was considered by Sutphen as perhaps his best friend. She is said to have backed him in many of his schemes, and to have been willing at all times to help him financially.

Sutphen, according to Mr. Wilson, was manager of the estate of a member of the Helme family in New Jersey. He made no accounting of his management, relying, it is said, upon Mrs. Helme, who was 90 years old, died Sunday before last.

Sutphen speeded up the consumption of whiskey from one to three quarts a day. Saturday night he and Miss Florence Ganests, former musical comedy actress, went on one last drinking bout. Shortly before dawn Sunday morning they went to his Central Park West apartment. A few hours later he was found sitting there dead. Later it was discovered that cyanide, and not too much alcohol, caused death, though in what form he took it the police and the District Attorney's office can only guess.

Sutphen leaves his wife, from whom he was separated, and their small daughter. They live with his mother, Mrs. Emma Sutphen, at Englishtown, N. J., where the funeral will be held tomorrow.

The tagua or ivory tree grows profusely in South America.

## "SALADA"

AT THE EXHIBITION HAVE representatives to welcome you to the enjoyment of our delightful tea room. "Delicious Salada" will be served every afternoon and evening.

## FORCE

WHOLE WHEAT FLAKES  
MALTED AND TOASTED

The health food recommended by doctors.

Made in Canada



## White Rose Gasoline

LOOK FOR THIS SIGN

"A SIGN OF QUALITY"

Canadian Oil Companies, Limited  
Canada's Largest and Oldest  
Independent Refiners of  
Gasoline and Lubricants.  
Always Use EN-AR-CO MOTOR OIL.

## MOTORS And Their Care



Practical Suggestions for Insuring the Longevity of the Car.

Rules for Learners.

1. Always have your permit with you.
2. Before starting the car first learn: (A) Rules of the road. (B) General features of engine and transmission. (C) Mechanism of control, such as steering, starter, clutch, gears, brakes and accelerator.
3. Before driving, learn how to start and stop.
4. Whenever you drive, a licensed operator or chauffeur must be seated beside you, ready and able to assist in word and hand at all times. Allow no one else on the front seat, and do not converse or permit your attention to be distracted.
5. Your instruction must be in earnest, with the purpose of learning to drive well and with safety to yourself and others. It must be continuous and thorough, and not merely as an occasional or passing amusement.
6. Learn at first at a place free from vehicles and persons, where there is ample room with a smooth, dry, level road, and no ditches, tracks, sand or the like. Do not drive in traffic until you have both skill and confidence.
7. Never drive alone until you are actually licensed, even if you think, or your instructor thinks, you are able.

**Efficiency in Steering Mechanism.**

The steering mechanism of a car should be frequently inspected. When adjusting it is best to turn the wheels to extreme right. Parts are worn less at this position than when straight ahead. A good adjustment at straight-ahead position would possibly bind at the angle position. Steering column should be solidly anchored to the main frame. This joint receives much of the steering strain and the shock when the front wheels meet obstructions in the road. Loose or broken rivets or bolts at this point are frequently causes of serious accidents.

**For Relief From Sun's Rays.**

According to Dr. W. W. Coblentz of the Bureau of Standards, aluminum paint applied to the under side of an automobile top will greatly reduce the amount of heat absorbed from the sun and radiated on the underside. The temperature inside the car will then

be more nearly that found in natural shade, as under a tree.

**When Cleaning the Engine.**

To prevent a fire or explosion it is best to use kerosene instead of gasoline when cleaning oil and grease from

metal parts. The cleaning solution should be applied with a wooden-backed brush. If extension cords are used for portable electric lights it is advisable to use vapor-proof fittings, a keyless socket, lamp inclosed in a vapor-proof globe, and further protect-

ed with a rigid cage to prevent breakage. It is advisable also to have armored cable instead of ordinary electric cord.

Women are learning the cigarette habit rapidly in China.



## Paperhanging now Simplified



**BEST ARTISTIC EFFECTS**

All Staunton Wallpaper is 22 inches in width. This allows of better development of the patterns and better artistic effects. Each Staunton pattern is handled with the most painstaking care and tasteful judgment by men who are experts in interior decoration.

The 1923-4 Staunton line of Canadian-made Wallpaper is unsurpassed in novelty, design, coloring, finish or variety by any country in the world.

Do you fully realize how much more simple, easy and rapid, paperhanging has become with the perfection of semi-trimming?

Consider the difference between this and the old-fashioned methods. Staunton Semi-Trimmed Wallpaper eliminates all trimming. You simply give the ends of the semi-trimmed roll a rap on table or floor and the selvage falls off. Then cut the strips the required length and apply paste. Hang the paper—and the result is a perfectly butted job.

Staunton Semi-Trimmed Wallpaper is accurately trimmed for you, in course of manufacture. It saves time, prevents muss and disorder, and simplifies the work throughout. It is to the advantage of all who hang wallpaper to use Staunton Semi-Trimmed Wallpaper.

Ask your dealer to show you the patterns.

## STAUNTON SEMI-TRIMMED WALLPAPER

Saves Time

MANUFACTURED EXCLUSIVELY BY STAUNTONS LIMITED, TORONTO



## Easier to Stop—Quicker Pick-Up The New McLaughlin-Buick

GREATER safety! Easier control! Greater economy! These are advantages provided by the new McLaughlin-Buick four wheel brakes. A slight pressure on the foot pedal (the method of operation is not changed), every wheel grips the road evenly and surely. The car is under complete control.

And the wear and tear on brake linings and tires are proportionately less.

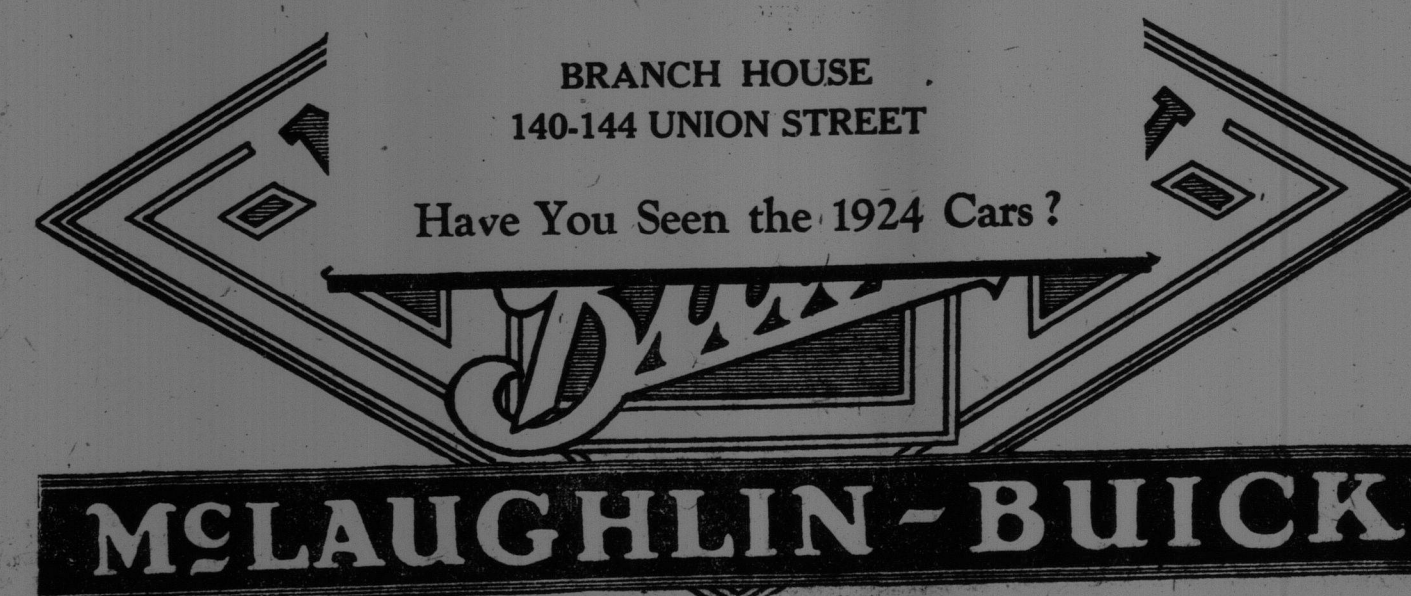
Four-wheel brakes are, however, only one of the improvements of the new McLaughlin-Buick. The Master Six engine is more powerful—70 h.p.—the chassis is longer and the body lines and colors are entirely new. Yet behind all these new features are the sound McLaughlin-Buick engineering and building principles that have made McLaughlin-Buick "Canada's standard car".

Don't fail to see these new 1924 McLaughlin-Buicks at the St. John Exhibition. Visit our display and examine them closely. It is the only way to fully appreciate their beauty and new features.

McLAUGHLIN MOTOR CAR CO., Limited  
Subsidiary of General Motors of Canada, Limited, OSHAWA, ONTARIO

BRANCH HOUSE  
140-144 UNION STREET

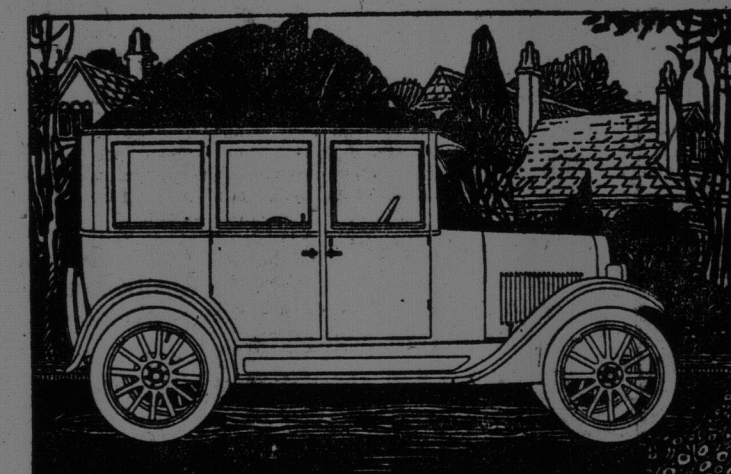
Have You Seen the 1924 Cars?



## People Now Demand Fully Equipped Cars

All over the Dominion there is a steadily growing demand for fully-equipped quality cars, low in first cost and economical in upkeep.

Motorists are realizing more and more that unless all the conveniences and extras, so essential to buy. Nothing further is needed but the license.



Mechanically Chevrolet is equally desirable. It is sturdily built for all driving conditions. The engine is powerful, easily controlled, and unfailingly dependable. Quality is built into every part of its mechanism.

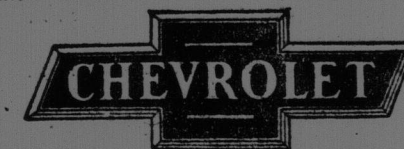
motoring comfort, are included, first cost is no real indication of the real cost of a car.

With all this, Chevrolet is the world's lowest-priced fully equipped, quality car. Not only lowest in first cost, but the most economical in operation of any car built.

Naturally they turn to Chevrolet. It is a complete car in every detail. Everything they could want is on it when they

CHEVROLET MOTOR CO. of CANADA LIMITED

Subsidiary of General Motors of Canada, Limited  
OSHAWA and WINNIPEG  
Dealers wanted in territories not adequately covered.



for Economical Transportation

J. CLARK & SON, 17 Germain Street  
ST. JOHN, N.B.

J. Clark & Son, Fredericton; The Lounsbury Co., Ltd., Newcastle;

Aiton & Adair, Sussex