

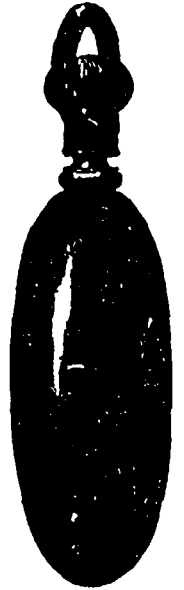
# A FEW OF THE ADVANTAGES

—OF—

## QUIGLEY'S INVISIBLE JOINT

—OVER—

### THE REGULAR JOINT.



1st. The same thickness of metal around the Pin. In the regular joint there is half filed off the joint on the outside, in opening the case, and finishing the joint, and in many cases more, thereby making the joints weak.

2nd. In putting the joint or hinge inside the centre it closes the back or cover to the centre or rim of the case. In the regular joint, where the joint or hinge is placed between the back or cover and centre or rim, it tends to push them apart, and in case of the pin being forced into the joint or hinge it forces them more apart, and leaves an opening for the dust to get into the works of the watch.

3rd. The joint or hinge being inside, the centre or rim is protected and being made heavier is stronger and will wear longer.

4th. The spring in the Hunting Case is made of a flat piece of steel, and is not hardened as hard as the one in the Regular Case. It is guaranteed not to break.

5th. Both hunting and open face cases open like the regular case, and unlike the majority of patent cases are not liable to get out of order.

6th. There are no joints or hinges on the outside to wear out the pockets, or admit dust.

7th. The outside surface of case being perfectly smooth, admits of continuous engraving around the centre or rim from the front to the back of case.

