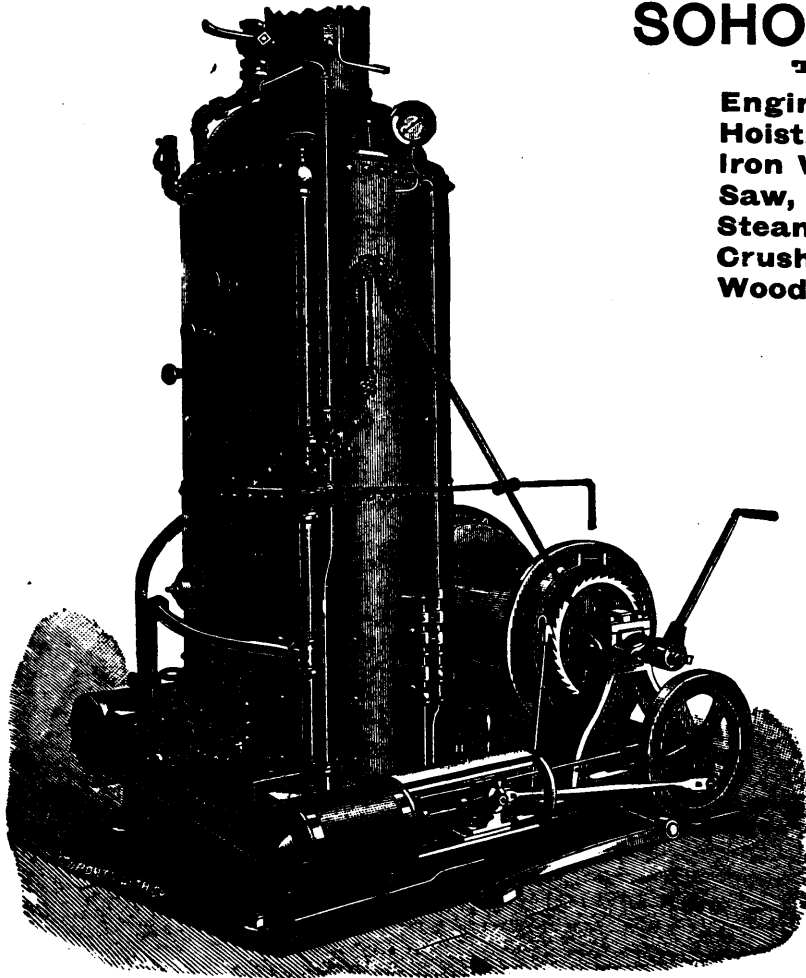


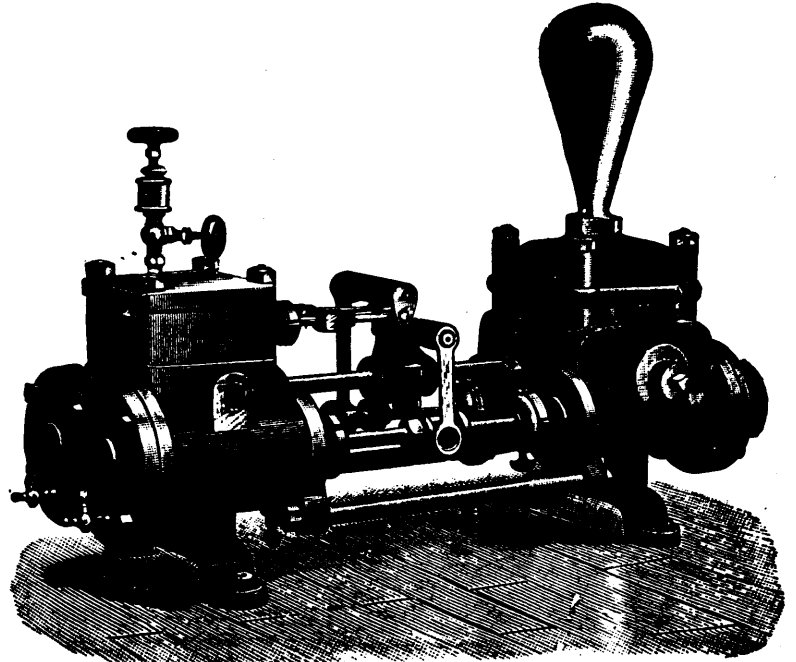
A. R. WILLIAMS, **SOHO MACHINE WORKS,**

TORONTO, ONTARIO.

**Engines and Boilers (all styles),
Hoisting Plant (every description),
Iron Working Machinery,
Saw, Shingle and Hoop Machinery,
Steam and Circulating Pumps,
Crushers, Compressors and Derricks,
Wood Yard and Cordwood Machinery.**



HOISTING ENGINES—(ALL STYLES.)



SEND FOR CATALOGUES.

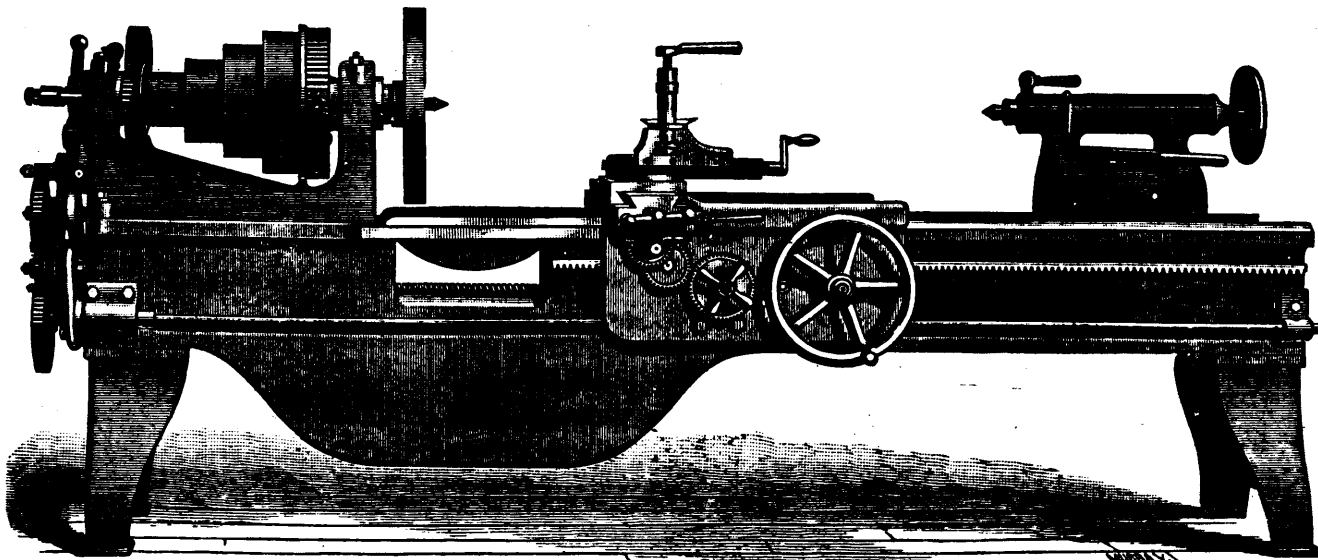
JOHN BERTRAM & SONS,

Canada Tool Works,

DUNDAS, ONT.

MANUFACTURERS OF

Machinists' Tools and Wood-Working Machinery.



36 and 40-inch Gap Lathes.

**Lathes,
Planers,
Drills,
Milling
Machines,
Punches,
Shears,
Bolt Cutters,
Slotting
Machines,
Matchers,
Moulders,
Tenoners,
Band Saws,
Morticers,
Saw Benches.**

Locomotive and Car Machinery, Special Machinery—Price List and Photographs on Application.