

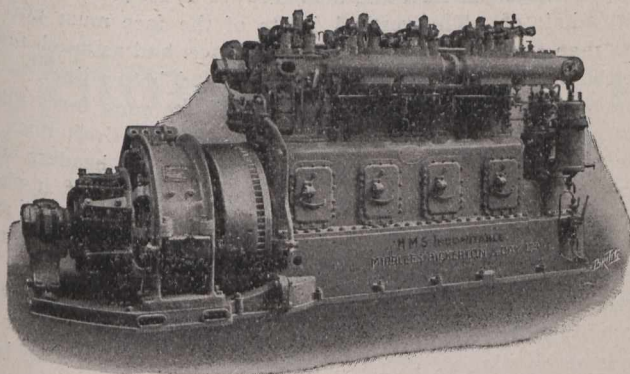
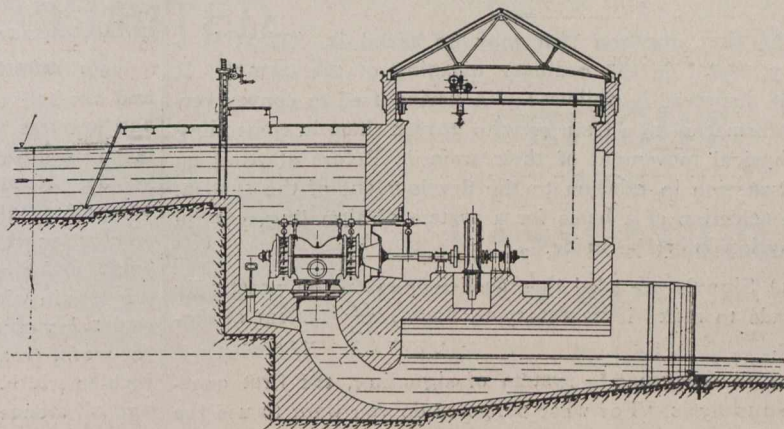
# Power Users Please Note!

We Supply

**WATERWHEELS**

of all types and  
all sizes;

also **PIPE LINES**  
and **GOVERNORS**

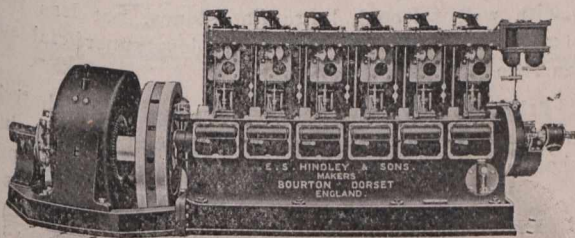


**ALLEY & McLELLAN  
STEAM ENGINES**

Up to 1,000 B.H.P.

**DANKS' BOILERS**, all types.  
**MIRRELES WATSON CO.'S  
CONDENSERS**

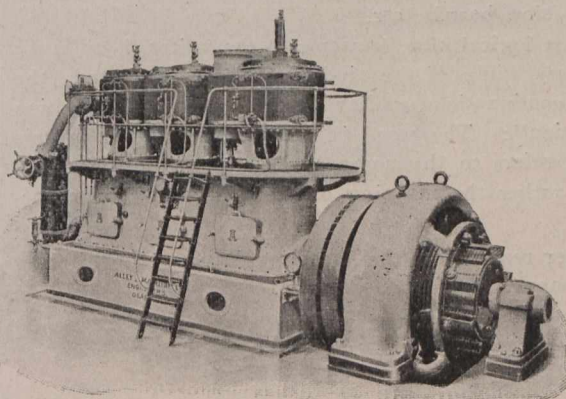
Barometric, Low Level Jet or Surface, all Counter  
Current. Edwards' Air Pumps.



**THE MIRRELES-DIESEL  
CRUDE OIL ENGINE**

35 to 1,000 B.H.P. High or Low Speed.

For Cheap Power. 3 K.W. Hours for 1 cent.



**HINDLEY'S HIGH SPEED  
GAS ENGINES,**

for Natural Gas, Charcoal, Peat, etc.  
Self-Lubricating.

## The Canadian Boving Co., Ltd.

164 BAY STREET - TORONTO

VANCOUVER - H. W. KENT, 427 SEYMOUR STREET