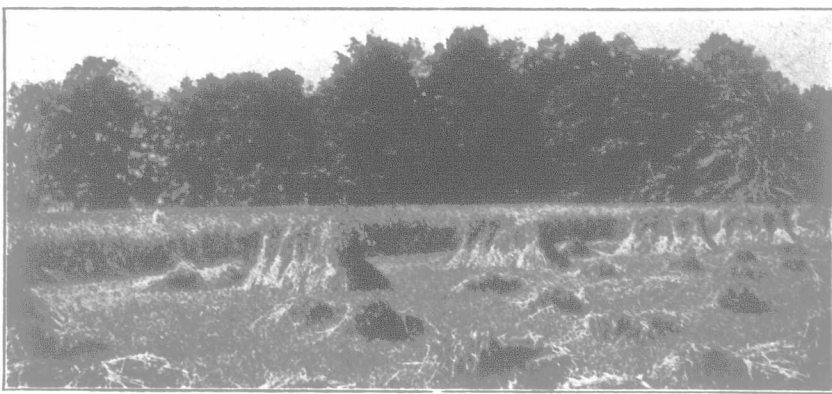


# Forty-nine bushels to the acre

## Grown in Ontario

The splendid wheat yield pictured here was grown in Western Ontario last summer on well-prepared soil, enriched with 300 pounds of fertilizer.



## Greater Crop Yields

Greater crop yields in Canada are of world-wide importance. European yields on old soils far exceed Canadian yields on new soils—except when improved methods produce crops like that pictured here.

**Announcement:** The Canadian Fertilizer Association have established a bureau which will encourage and assist Canadian farmers to achieve greater results in soil tillage, fertility maintenance and crop production. This Soil and Crop Improvement Bureau, under the direction of Henry G. Bell (a native of Ontario and a graduate of Ont. Agr. Coll., later Prof. of Agronomy Univ. of Me.), co-operates with all organizations working for the improvement of Canadian farming. Farmers are urged to take full advantage of this valuable information service, which is free to all.

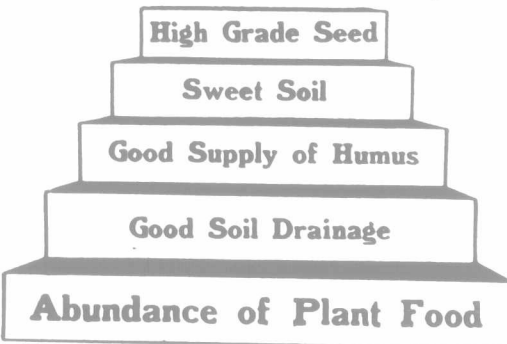
## Fertilizer

If the labor problem limits areas under crop you can increase yields 50 to 75 per cent. by careful soil preparation, seed selection and judicious use of fertilizers, and thus use the labor to best effect.

Fertilizers carry exactly the same plant food constituents as are carried by manure, but in more concentrated form.

Dr. C. A. Zavitz reported in 1917 the following results: Complete fertilizer used with winter wheat gave an increase of 5.2 bushels per acre, at a cost of 82c. per bushel (pre-war prices) when applied in the autumn; and an increase of 8.3 bushels per acre, at a cost of 51c. per bushel when applied in the spring.

## STEPS TO BIGGER CROPS



### What to do Now

Top-dress fall wheat with fertilizers. It is your last opportunity to increase 1918 fall wheat yields.

Prepare to fertilize spring crops. Use fertilizers this spring and profit by high crop prices.

## Manure

Manure spread thin yearly (4 or 5 tons per acre) pays better than manure applied in equal quantity at one application every four or five years.

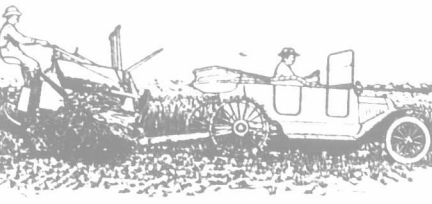
Eight tons of manure (protected from rain and snow) strengthened by 320 lbs. acid phosphate to the acre, increased wheat yields at Ohio Experimental Station 5.38 bushels per acre.

Similar fertilization increased corn yields 11.54 bushels per acre.

If you do not have enough manure to apply this quantity per acre, use complete fertilizers rather than acid phosphate.

SEND POSTAL CARD TO-DAY FOR BULLETIN, "HOW TO INCREASE ONTARIO CROP YIELDS"

**Soil and Crop Improvement Bureau**  
of the Canadian Fertilizer Association  
1111 Temple Building, Toronto



## The Staupe Mak-a-Tractor

The Staupe Mak-a-Tractor is neither a novelty nor a toy. It has lightened the labour and put money into the pockets of every man who has used it, and over 7,000 Staupe Mak-a-Tractors were at work taking off last season's crops.

Neither is the Staupe Mak-a-Tractor a farm tractor which can only be worked profitably on a large farm. You will find the Staupe Mak-a-Tractor on the largest farms in America but it has proven itself a money maker and a time saver on a multitude of little farms.

This machine costs \$240, and when not in use is taken off the Ford car. It does with ease, the field work of 4 good farm horses and supplies an abundance of power at the belt.

We ask you as a practical business man to inform yourself immediately, concerning this popular agricultural implement.

You are doing us a favor if you write for our descriptive booklet which is well worth reading.

The Ontario Auto-Tractor Co., Ltd., 157 Bay St., Toronto

## 100,000 FREE FARMS

OF 160 ACRES EACH



IMMENSE  
WEALTH  
IN  
WESTERN  
CANADA

Send for  
FREE  
Book

"Home-  
Seekers' and  
Settlers'  
Guide"

Contains valuable  
and interesting  
information based  
on Government  
Reports

**ENTERPRISE and ENERGY**—One Alberta town reports at least 100,000 acres of new land in that vicinity plowed last fall for crop this year; has six elevators now and three new ones and a flour mill under way. The reason—1917 values for wheat, oats, barley and flax seed alone for the prairie provinces is \$613,885,700.00. Start now, share it this year.

**THOUSANDS OF FREE FARMS**—Whether you have capital or not, there is a farm for you along the Canadian Northern Ry.—160 acres of Government homestead lands, surveyed and ready for entry. First comers have the choice.

**Improved Lands from \$15 UP PER ACRE**

Thousands of acres of selected lands, close to the railway, can be purchased on easy terms, cash, or part cash and crop payments. This means schools, good roads, transportation and market facilities. Prices continually advancing; the values are there.

**Low Fares** **Comfortable Trains**

By Canadian Northern, the logical route from Eastern to Western Canada. Through tickets everywhere. Get copy of the "Guide" to-day; any agent, or write General Passenger Dept., Montreal, Que.; Toronto, Ont., or Winnipeg, Man.

## Cur

The surv  
Contingent  
week on a th

The maki  
ing liquor  
throughout  
in Montrea  
Quebec, wh  
1st, 1918, i  
vincial law.

A bill has  
Legislature  
M. P. P.,  
physical fit  
men and wo  
to marry.

Mrs. Lena  
who wrote  
ing" was ki  
raids on Lo

United St  
has gone to  
there.

John Dill  
Redmond as  
Ireland.

The world  
ship, the  
launched at  
States last w

The most  
the past for  
of aerial rai  
for the many  
has been ta  
right good  
having a tast  
in warfare  
March 13 B  
on the city  
the docks at  
bombed by B  
encounters  
taken place  
French lines  
airships aga  
coast, and o  
great attack  
not so succ  
Over 60 plane  
the city, so  
going over it  
killed 34 p  
children, an  
planes were  
were driven  
which appr  
driven off b  
arose from th

At  
stated that  
started alon  
surmized th  
offensive ma  
15 Canadian  
raid in the  
the past w  
some trench  
the America  
the mile of t  
by them. At  
forces betwe  
erland are a  
lines. In  
proved bu  
fear of gene  
Petrograd an  
while the G  
ferred to Mo  
Soviets held  
the delegate  
Wilson's not  
with German  
at Brest-Lit  
German troo  
will find no  
Nikolaiev, g  
Cossacks, ha  
center of Sou

Why Binks  
how Binks m

"No wonde  
—St Louis G

Unintention  
turned from  
get yourself  
dear?"

Hub.—"Ye  
in the ice-box  
onions I found

Wife—"On  
my bulbs."