

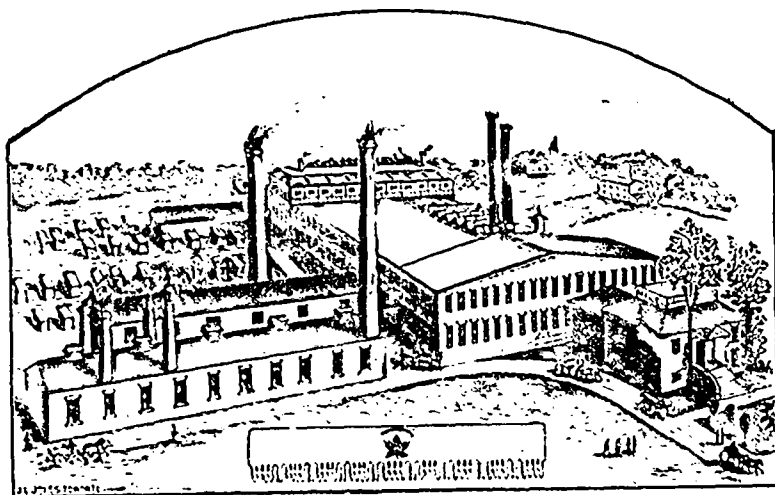
THE
**MAPLE LEAF
 SAW WORKS**



**Shurly &
 Dietrich**
 GALT, ONT.

Manufacturers of

- CIRCULAR SAWS**
- GANG SAWS**
- MILL SAWS**
- BAND SAWS**
- CROSS-CUT SAWS**



Manufacturers of

- HAND SAWS**
- BUCK SAWS**
- PLASTERING TROWELS**
- BUTCHER SAWS**
- STRAW KNIVES, &c**

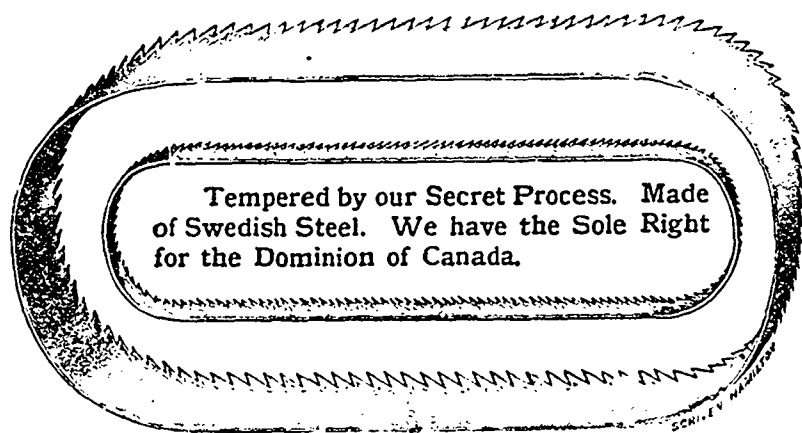


GROUND THIN ON BACK
 Save Labor Save Gumming
 Save Time Save Files

This Saw Stands Without a Rival
 AND IS THE
FASTEST CUTTING SAW IN THE WORLD!

Its Superiority consists in its Excellent Temper. It is made of "Razor Steel," which is the finest ever used in the manufacture of Saws. We have the sole control of this steel. It is tempered by our secret process, which process gives a keener cutting edge and a toughness to the steel which no other process can approach.

We are the only manufacturers in the world who export Saws in large quantities to the United States.



We Manufacture

HIGH GRADE BAND SAWS

of All Widths and Lengths.

These Saws are made of Refined Swedish Steel imported direct, and tempered by our Secret Process; for Fine Finish and Temper are not excelled.