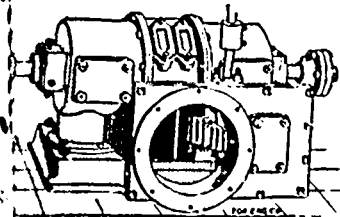


"Little Giant" Turbine.....

Vertical and Horizontal Built in 44 Sizes

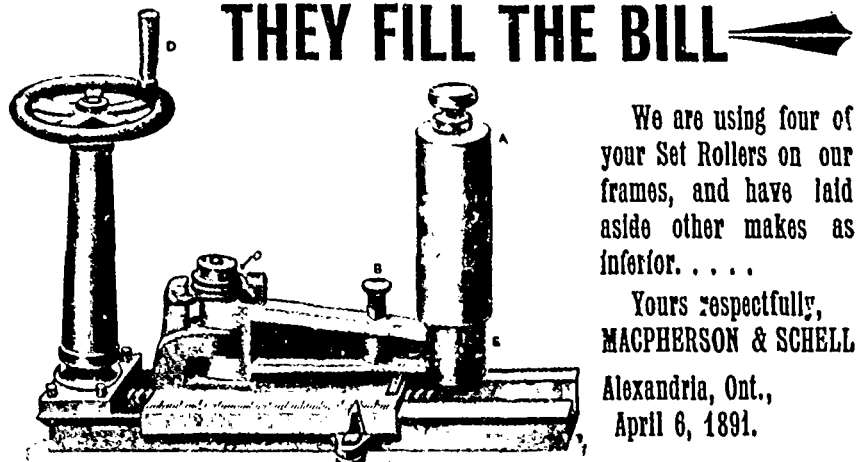
Complete in its own case.
No expensive flume required.
Highest percentage of power guaranteed at full and partial gate opening.
Machine Dressed Gearing, Shafting, Pulleys, Hangers, Etc.



WRITE FOR CATALOGUES AND GEAR LISTS

J. C. WILSON & CO.
GLENORA, ONT.

53 Little Giants sold
to the Canadian Government.



THEY FILL THE BILL

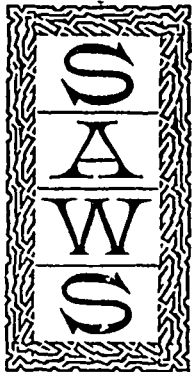
We are using four of your Set Rollers on our frames, and have laid aside other makes as inferior. . . .

Yours respectfully,
MAGPHERSON & SCHELL
Alexandria, Ont.,
April 6, 1891.

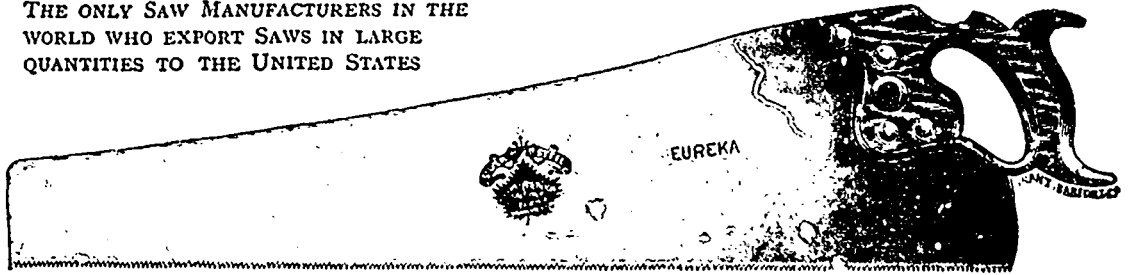
LANCASTER MACHINE WORKS - LANCASTER, ONT.

SHURLY & DIETRICH

GALT, ONT.



THE ONLY SAW MANUFACTURERS IN THE WORLD WHO EXPORT SAWS IN LARGE QUANTITIES TO THE UNITED STATES



SOLE PROPRIETORS OF THE SECRET CHEMICAL PROCESS OF TEMPERING : : Our Silver Steel Saws are Unequaled

IMPROVED IRON FRAMES

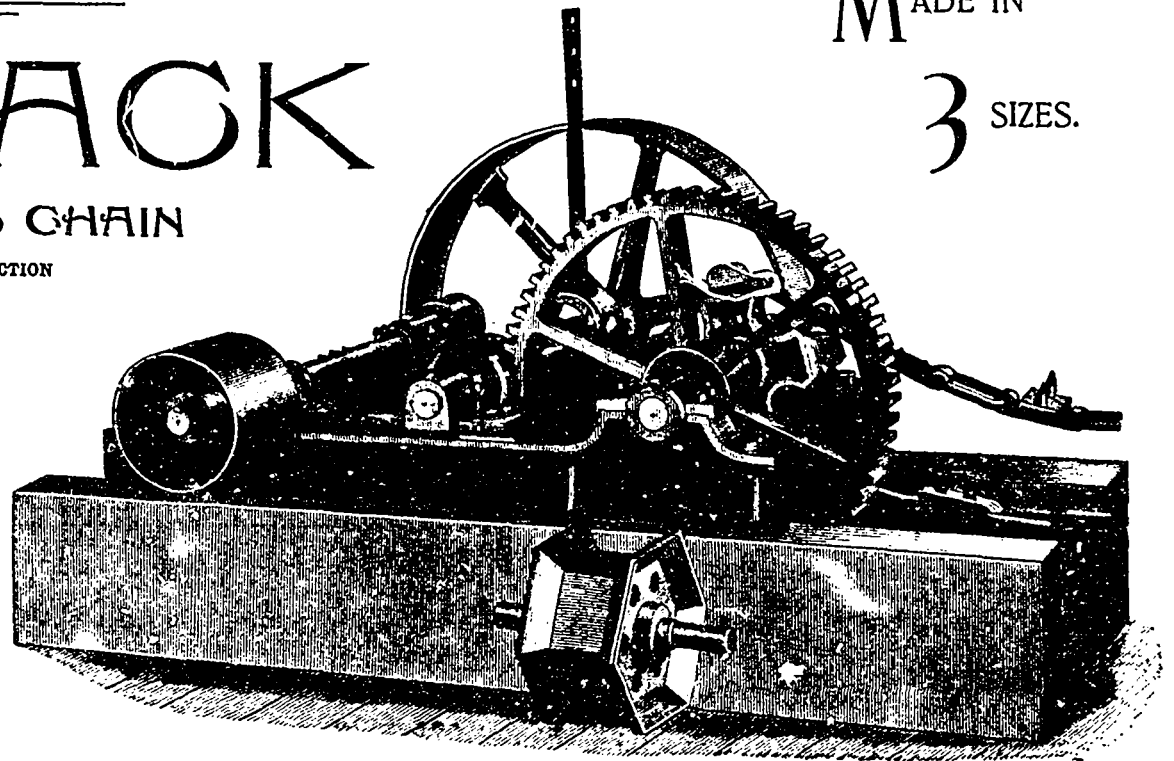
LOG JACK

WITH ENDLESS CHAIN

DRIVEN BY INTERNAL FRICTION

MADE IN

3 SIZES.



THE most powerful and smoothest-running Jack Works made.

Easy to place in mill.

Can be placed on mill floor or on rollers underneath the floor.

No crossed belt is required.

Can be stopped or started instantly, without a jar.

Correspondence Solicited

Send for Photo of Medium Size Circular Saw Rig

Canadian Locomotive & Engine Co., Ltd.

KINGSTON - ONTARIO