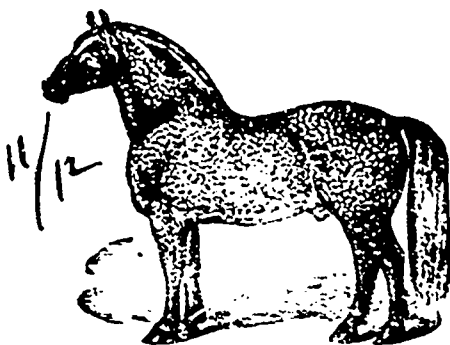


# Island Home

## Stock Farm,

Crosse Ile, Wayne Co., Mich.  
SAVAGE & FARNUM, PROPRIETORS.



Patrols No. 250 (1167)

— IMPORTED —

### Percheron Horses.

All stock selected from the best of sires and dams of established reputation and registered in the French and American stud books.

#### ISLAND HOME

Is beautifully situated at the head of Crosse Ile in the Detroit River, ten miles below the City, and is accessible by railroad and steamboat. Visitors not familiar with the location may call at city office, 22 Campus Building, and an escort will accompany them to the farm. Send for catalogue, free by mail. Address, SAVAGE & FARNUM, Detroit, Mich.

The Most Extensive pure Bred Live Stock Establishment in the World.



Best Individual Excellence and Choice Breeding

Clydesdale Horses, Percheron-Norman Horses, English Draft Horses, Trotting-Bred Roadsters, Imported French Coachers, Cleveland Bays and Shetland Ponies, Holstein and Devon Cattle.

No further evidence is needed of the usual quality with which our stock has been selected than the fact that the BEST OF THE BEST of animals imported and sold by us during a career of ten years, every one, we believe, including all kinds and all breeds, is now alive and doing well, with the exception of only five. We feel safe in saying that no other establishment in America can approach such a showing for the length of time and the large number of animals.

No careful and judicious person will fail to well consider this important fact, in making his purchases. We invite critical inspection of our stock and careful comparison with that of any other establishment.

PRICES LOW! TERMS EASY! Visitors Welcome. Correspondence Solicited. Circulars Free.

### POWELL BROTHERS.

Springboro, Crawford Co., Pa.

### MAPLE GROVE FARM,



S. SHUNK, Jr.,

ED. HELEY P. O., ONT.

Importers of THOROUGHBRED

### HOLSTEIN CATTLE.

The herd consists of four imported Hottens and one imported Bull. Lady Moll has dropped a fine calf. This heifer took First Prize in Holland. Milk record 28 lbs. per day. Hottens Jeanine, George, etc. This herd was imported by B. H. Lord & Son, Cincinnati, N. Y., with a view to secure only the best that could be obtained. Stock for sale, visitors welcome. For particulars address as above.

2 Miles from Thornhill Station, N. & N.-W. R. R.

Prof. Low's Hinge Sulphur Soap is highly recommended for all humors and skin diseases.

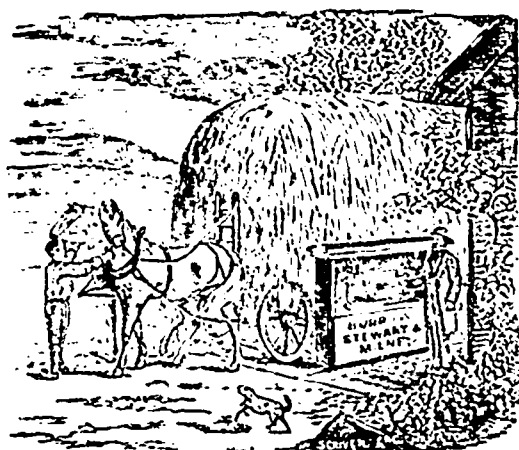
## BURROW, STEWART & MILNE,

Imperia Standard

### SCALE WORKS,

HAMILTON, ONT.

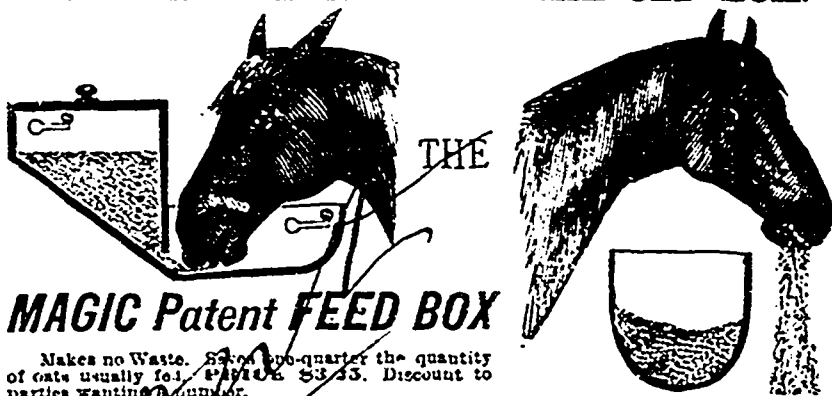
Stock Scales, Dairy Scales, Hay Scales, Grocers' Scales, Farmers Scales, Butchers' Scales, Coal Scales, Steelyards, etc.



Wherever our Scales have been exhibited, they have been awarded First Prize, and have never once taken Second Place, and we claim that for accuracy and for quality and beauty of workmanship they are UNEQUALLED. Send for Illustrated Catalogue. Every Scale Inspected, Stamped and Fully Guaranteed.

#### THE MAGIC BOX.

#### THE OLD BOX.



### MAGIC Patent FEED BOX

Makes no Waste. Saves one-quarter the quantity of oats usually fed. Price \$3.25. Discount to parties wanting a number.

SEND FOR DESCRIPTIVE CIRCULAR OF THE :

### MAGIC PATENT FEED BOX

And Catalogue of our

#### IRON STABLE FITTINGS.

B. G. TISDALE, Brantford Stove Works, BRANTFORD, ONTARIO.

We lead Canada in the manufacture of Iron Stable Fittings.

### STANDARD Chopping Mills!

Using Best French Burr Stones.



SIZES MADE - 12 inch, 20 inch, 30 inch, 35 inch, 42 inch. All iron cases, wood frames. CAPACITY - 8 to 40 Bushels per hour requiring 2 to 20 horse power. This cut shows 20 inch mill ready for work with

#### Improved Elevator Attachment.

Grain is emptied from bags into hopper on the right elevators to mill hopper ground, dis-charged into second elevator, elevated and bagged, bag being hung from spout. SAVES TIME.

#### SAVES MANUAL LABOR

By its use one man can readily attend to mill.

Every Stock Raiser, Every Thresher, Every Sawmiller

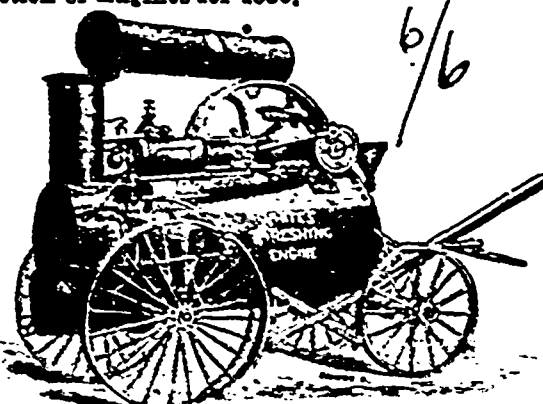
should have one. No trouble to keep in order. Stones will last a lifetime.

EASTERN OFFICE, MONTREAL. 104 St. James St.

BRANTFORD

### WATEROUS ENGINE WORKS Co., and WINNIPEG.

In consequence of the increasing demand for my ENGINES, I have added to my shops and machinery, and shall largely increase the production of Engines for 1895.



The engines may be seen at Van Tassel's foot bridge warehouse, Belleville. As a proof of the popularity of my Traction Engines, I may state that three or four other firms have commenced to imitate them, but sensible farmers will see that they get a genuine WHITE ENGINE.

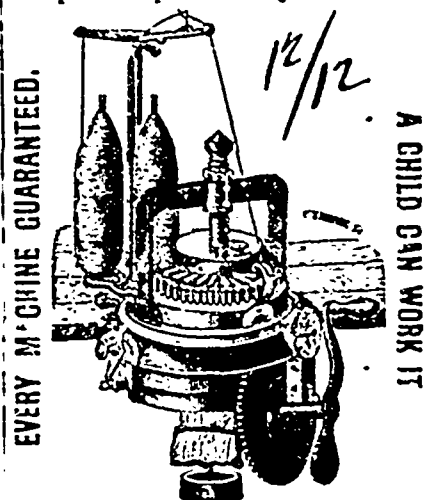
I am now making a larger number than ever before for the coming season.

## THE "ECLIPSE"

Is the only perfect family

### KNITTING MACHINE

Simple! Rapid! Easily Worked!



EVERY MACHINE GUARANTEED.

A CHILD CAN WORK IT

#### An Eclipse Knitting Machine

will pay in any family. After supplying the family requirements goods can be made for neighbours or the trade. A more profitable use of spare hours could hardly be found. A BOY OR GIRL CAN EARN \$1.00 TO \$2.00 a day on the "Eclipse." MERCHANTS can manufacture all the Hosiery, Scarfs, Mitts, Touques, etc., required in their business, during dull season, and thus keep their clerks employed. FAMILIES can manufacture their own yarn into various kinds of goods and realize 400 per cent. more on the wool they raise. The only perfect Knitting Machine is one that has a simple and reliable ribber. The ribber attachment of the "Eclipse" differs in almost every respect from others, and is pronounced perfect by competent judges. The "Eclipse" is the only Machine suitable for Family Use. Toronto Knitting Machine Co., 16 BAY STREET, TORONTO.

INC LINES SELECTED BY THE U.S. GOV'T TO CARRY THE FAST MAIL.

## Burlington Route C.B. & Q.R.R.

#### It is the only line with its own track from CHICAGO TO DENVER,

Either by way of Omaha, Pacific Junc., St. Joseph, Atchison or Kansas City.

It connects in Union Depots with through trains from NEW YORK, PHILADELPHIA, BOSTON

and all Eastern points. It is the principal line to SAN FRANCISCO, PORTLAND & CITY OF MEXICO

It traverses all of the six great States of ILLINOIS, IOWA, MISSOURI, NEBRASKA, KANSAS, COLORADO with branch lines to all their important cities and towns.

From CHICAGO, PEORIA or ST. LOUIS, it runs every day in the year from one to three elegantly equipped through trains over its own tracks between

Chicago and Denver, Chicago and Omaha,

Chicago and Council Bluffs, Chicago and St. Joseph,

Chicago and Atchison, Chicago and Kansas City,

Chicago and Topeka, Chicago and Cedar Rapids,

Chicago and Sioux City, Peoria and Council Bluffs,

Peoria and Kansas City, St. Louis and Omaha,

St. Louis and St. Paul, Kansas City and Denver,

Kansas City and St. Paul, Kansas City and Omaha,

For all points in Northwest, West and Southwest.

Its equipment is complete and first class in every particular, and at all important points interlocking switches and signals are used, thus insuring comfort and safety.

For tickets, Rates, General Information, etc., regarding the Burlington Route, call on any Ticket Agent in the United States or Canada, or address

T. J. POTTER, 1st V.P. & Gen. Mgr., CHICAGO.

HENRY B. STONE, Asst. Gen. Mgr., CHICAGO.

PERFECTLY EQUIPPED, GEN. PAS. ART., CHICAGO.

### How To Build MODERN LOW-COST HOUSES.

Just published. A large book, giving plans, views, descriptions and estimates of 60 modern houses, \$200 up to \$2,500, for all climates. No complete book of this kind ever published. Address: BUILDING ASSOCIATION, 21 BEEKMAN ST., (Next 17th) N. Y.