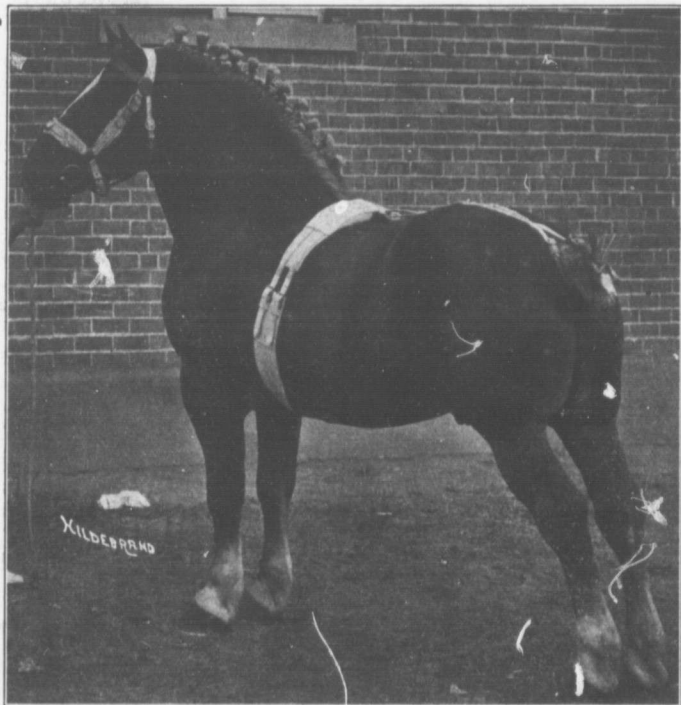


short, clean-cut heads with fine, short ears. The neck is generally rather short and full, though symmetrical, and horses of no other breed show broader breasts and greater chest capacity. The Belgian will girth more than any other breed of the same size. They are very heavy hors-

and strongly muscled. The croup of the Belgian is often faulty. Although it is usually quite broad

and strongly muscled it is often short and rather steep, the tail being set quite low. This tends to make the horse appear plain behind and over heavy in front. Of course a long, level croup is desirable and the best individuals show this, but the breed has been faulted for short, steep rumps.



GRAND CHAMPION BELGIAN STALLION—CHICAGO INTERNATIONAL, 1917.

es in front, broad of breast and deep and full of chest. As is always the case with animals showing great girth they have exceedingly well-sprung ribs and should show no tendency to flatness in this particular point.

A great deal of the compact appear-

and strongly muscled it is often short and rather steep, the tail being set quite low. This tends to make the horse appear plain behind and over heavy in front. Of course a long, level croup is desirable and the best individuals show this, but the breed has been faulted for short, steep rumps.