

Vt. It is of native parentage, from Adirondac crossed with Delaware. A small grape, said to be quite free from foxiness, and very sweet, and ripens even earlier than Adirondac. Mr. Pringle's opinion as expressed to a friend of ours, is, that is likely to prove quite a valuable grape in the North. It is in the hands of B. K. Bliss, New-York.

LADY originated in Ohio, and is said to be a seedling of Concord which ripens 10 days before its parent. It promises to be an early grape of good fair quality.

ANTUON is from a seedling of the Clinton type hybridised with Golden Chasselas, raised by Mr. Charles Arnold, Paris, Ont. Here let us note that the female parent of this vine is of the Cordifolia or Frost Grape Species. A grape, we are led to believe, of fine quality, not to say late, and one that should be tried on our uplands.

NAOMI is a seedling of Clinton and one of the Muscats, raised by Mr. Ricketts, who produced the Lady Washington.

#### OUR ENGRAVINGS.

Two Shorthorn cows, the property of the Hon. M. H. Cochrane, of Hillhurst. Both are rare milkers, the udder of the Lady of the Lake, when we saw her last, was a model of perfection.

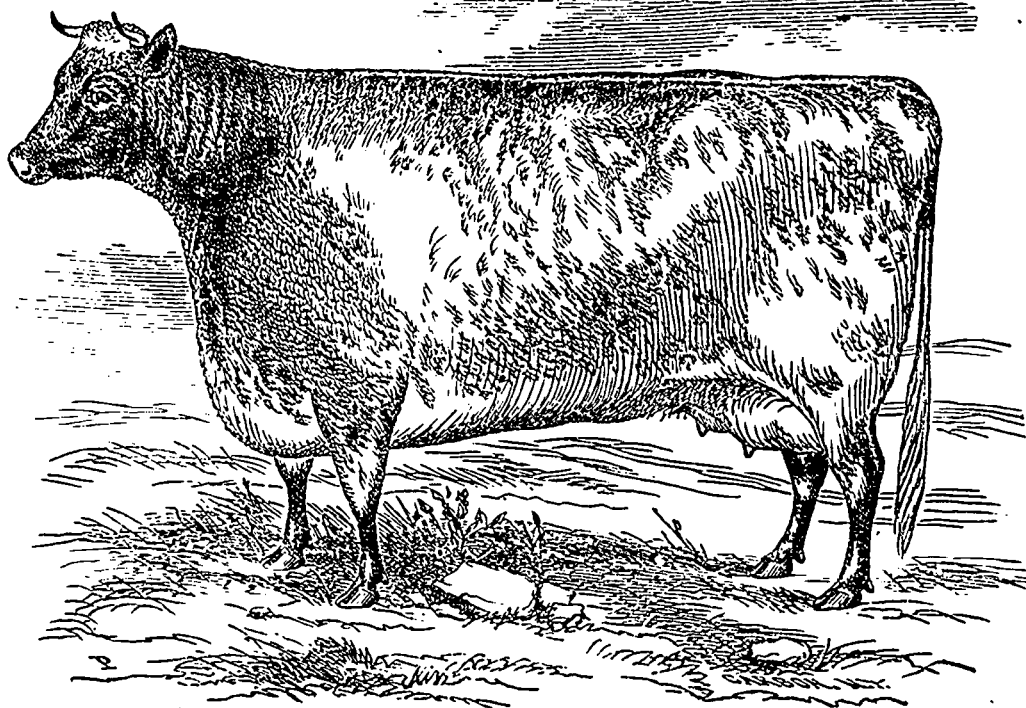
Draining tools, i. e. semi-cylindrical bottoming tool and draw-scoop—tramp-pick—flat draw-scoop, and pipe-layer.

#### POULTRY DEPARTMENT.

*Under the direction of Dr. Andres, Beaver Hall, Montreal*  
Poultry on the Farm.

We give to our readers part of an article written for the London Live Stock Journal by Mr. Lewis Wright.

In considering how poultry can be made more profitable and therefore more popular, upon existing farms, we must remember that the main difficulties are pretty much the



THE LADY OF THE LAKE.

The character of the vine, and of the size and quality of fruit, as given by Mr. Downing, show it to be a first class fruit in every respect. It ripens with Concord.

LADY CHARLOTTE, from Delaware fertilized with Iona, is another pure native raised by Mr. Pringle, whose bearing and quality are highly spoken of. It ripens with Concord.

Of the seedlings of the late T. B. Miner, now held by Mrs. Miner, Linden, Union Co, N. Y., BELINDA is said to ripen a week earlier than Concord: and CARLOTTA, ADELIN, & ANTOINETTE, with that variety.

Of grapes later than these we will make no mention, as they are suitable only to very special localities.

Of red and black grapes we hope to speak later.

CHARLES GIBB, Sec.-Treas.

same as encountered in poultry farming pure and simple. They still consist, mainly, in having to utilize a great number of small profits, and in avoiding the multiplied chances of small wastes and losses on every hand. But the problem is faced under different and, in most cases, more favorable conditions. The improvement of the stock as regards laying and other qualities must, in this case, take the first and most commanding share of attention; but will generally have to be effected upon some actual stock or other which already exists. In many instances, it would really be best to clear out the old stock entirely, and start entirely fresh by purchasing either stock or eggs: but not every farmer has the spirit for such radical reforms, and it is by no means necessary: much can be done in other ways, though I repeat it