

POTATOES

P. E. I. POTATOES

"Blues,"

90 lb. Sax.

Wholesale Only.

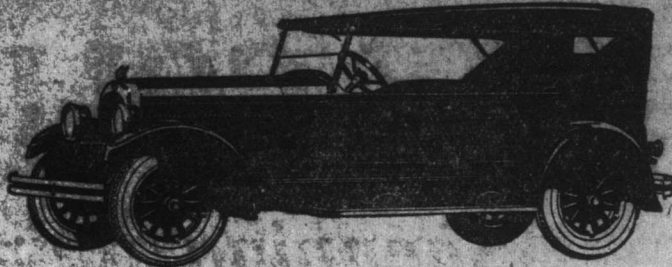
GEO. NEAL

Limited.

Wholesale Distributors.

Beck's Cove
Phone 264

Water St. East
Phone 17



5-PASSENGER PHAETON.

Into the Discard Go Wasteful Designs

If you analyzed the public's unbounded enthusiasm for the CHRYSLER SIX you'd find that it included a decided feeling of relief. They are overjoyed to find that at last brilliant performance—more brilliant than they have ever before experienced—can be had without penalties and annoyances. That's why the CHRYSLER SIX has invaded so many price fields. It is not a question solely of economy, although it is a CHRYSLER SIX gets its results with an economy of

means that makes one marvel. It is not solely the car's power, speed and agility, although they give even the most experienced a genuine thrill. It is the idea that here at last are all these things plus riding qualities and ease of handling and parking that make all conventional designs seem absurdly cumbersome, unwieldy and wasteful. Once you experience it, you will be as great a CHRYSLER enthusiast as anyone.

Marshalls' Garage

WATER STREET WEST
CHRYSLER SIX.

in.f.11

A Splendid Assortment

—OF—

Lipton's Celebrated Groceries

—AT—

The Royal Stores, Limited

- LIPTON'S Biscuits.
- " Cocoa, in 1/4 & 1/2-lb. Tins.
- " Coffee Essence.
- " Table Jellies.
- " Orange Marmalade, in 1-lb. Glass Jars.
- " Jams, in 1-lb. Glass Jars.
- " Honey, in 1-lb. Glass Jars.
- " Lemon Cheese, in 1-lb. Glass Jars.
- " Mince Meat, in 1-lb. Glass Jars.
- " Gravy, Browning.
- " Creme de Menthe, in 1/2-lb. Tins. (The after dinner sweetmeat).
- " Cream Caramels, in 1/4-lb. & 1/2-lb. Tins.
- " Milk Chocolate Croquettes, in 3-oz. and 6-oz. Pkts.

At Lowest Prices. Wholesale & Retail.

The Royal Stores, Limited

GROCERY DEPT.

dec24.eod.t

Nfld. Government Railway.

FREIGHT NOTICE.

PLACENTIA BAY STEAMSHIP SERVICE.
Freight for Presque route (West run) accepted at Freight Shed, to-day, Friday, from 9 a.m. to 5 p.m.

WITHDRAWAL OF BRANCH TRAIN SERVICE.
Notice is hereby given, that—Weather conditions permitting—the following Branch Railway lines, namely: Trepassy Branch, Bay-de-Verde Branch, will be operated up to January 15th, 1925, and on and after that date, said Branch Lines will be closed to traffic. Due notification of re-opening will be given.

Final Freight Acceptance for these Points will be on Monday, January 12th.

TO ALL CONCERNED.

The Railway will endeavour, as far as possible to forward all freight via North Sydney and Port aux Basques, but reserves the right, whenever circumstances in the opinion of the railway, require it, to forward freight originally billed via North Sydney and Port aux Basques, and designated steamers, via Halifax or Louisbourg, collecting extra charges over connecting lines between North Sydney and Louisbourg, and also the right to forward same by any steamer owned or chartered by the Railway from North Sydney or Louisbourg, or Halifax, direct to St. John's, or Newfoundland ports, other than Port aux Basques.

Shippers or Consignees, when effecting Marine Insurance, should bear this in mind, and have their policies covered accordingly.

Nfld. Government Railway.

Red Cross Line

NEW YORK. HALIFAX. ST. JOHN'S

Schedule of Sailings for December.

From New York:	From St. John's
..... SILVIA	January 3rd—1925
January 3rd-25 ROSALIND
	January 10th—1925

THROUGH RATES QUOTED TO ALL PORTS

WINTER PASSAGE NOW EFFECTIVE.

Round trip tickets issued at special rates with six months' stop-over privileges.

BOWRING & COMPANY, 17 Battery Place, New York.

General Agent.

G. S. CAMPBELL & CO., HALIFAX, N.S. Agents.
HARVEY & CO., LTD., ST. JOHN'S, Nfld. Agents.

Jan 5, n.w.f.t

We wish all our Customers and Friends
A Right Merry Xmas
and a
Bright & Prosperous New Year

The Standard Mfg. Co., Ltd.

St. John's, Newfoundland

sept19.f

Increasing Dividends

During the present year, Crown Life Policyholders are receiving larger Dividends than ever before. This means that their insurance is costing them less. It will pay you to investigate the many attractive features of Crown Life policies.

CYRIL J. CAHILL
MANAGER FOR NEWFOUNDLAND.
Law Chambers, Duckworth St., St. John's.

CROWN LIFE INSURANCE COMPANY

dec6.eod

THE SAME OLD STORY!

"BURNT OUT—NO INSURANCE"

Why continue to be open to such a risk when a small outlay will protect you?

Maximum Protection at Lowest Rates.
QUEEN INSURANCE COMPANY

— AND —
GREAT AMERICAN INSURANCE CO'Y.,
GEO. H. HALLEY, LTD.
AGENTS. P.O. Box E5075

Phone 658.
nov29.th.m.f

Cudgel thy brains no more about it, but BUY, for popular opinion has long since decided in favour of the charming quality and superb finish of the famous

Skipper Brand Stainless Cutlery

Manufactured by

S. Hibbert & Son, Limited.
SHEFFIELD, ENGLAND.

and Sold by the leading Hardware Stores of St. John's, Newfoundland.

sept31.y.eod

Money Well Spent!

When your festivities are forgotten, one of MAUNDER'S OVERCOATS will remind you that your money was well spent. We have them (not from Mitchell's Gardens) but from the best English Woollen Houses. The choicest range yet shown; no two alike.

SAMPLES SUBMITTED

John Maunder
TAILOR & CLOTHIER
St. JOHN'S, N.F.

Anthracite Coal.

NOW LANDING:
A VERY SUPERIOR GRADE OF
WELSH ANTHRACITE.
A small cargo at our usual low prices.
W. H. HYNES.

aug23.y.eod

FOR SALE

Best American Sole Leather, Upper Leather, English and American, Manila and Steamed Tanned Rope, all sizes. Best Italian Hemp Lines and Twines. Chains, Anchors and Grappels. Lubricating Oil.
Men's and Boys' Long and Short Boots, 100% Leather—all going at Rock Bottom Prices.
We also buy Brass, Copper, Lead, Old Rope, Cow Hides, Cat Skins, Sheep Skins, Raw Wool and all kinds of Raw Furs.
HIGHEST PRICES PAID.
NORTH AMERICAN FUR, HIDE & METAL CO'Y.,
WATER STREET WEST.

oct19.f

USEFUL HOLIDAY PRESENTS IN

Gent's Furnishings

for your Father, Brother or some one else's Brother, consisting of

Beautiful Shirts, Scarfs, Neckwear,
Bows, Suspenders, Arm Bands, etc.

In our Tailoring Department we are specializing on a beautiful line of OVERCOATINGS at reduced prices.

E. D. SPURRELL
365 Water Street
St. John's.

WM. SPURRELL
210 Duckworth St.
Branch: Grand Falls.



TO OUR PATRONS and FRIENDS

Sincerely indeed do we wish you a Merry Xmas and a Bright and Prosperous New Year.

W. P. SHORTALL,

THE AMERICAN TAILOR.

800 Water Street
ST. JOHN'S, Nfld.
Phone: 477. P.O.B. 445.

Farquhar Steamship Co's.

BOSTON—HALIFAX—ST. JOHN'S, Nfld. SERVICE.

S. S. "AMANDA"

(Freight Only)

Leaves Boston . . . Dec. 19th; Jan. 6th for Hx. & St. John's
Leaves Halifax . . . Dec. 23rd; Jan. 9th for St. John's
Leaves St. John's . . . Dec. 29th; Jan. 13th for Hx. & Boston
Leaves Halifax . . . Jan. 3rd; Jan. 17th for Boston

HALIFAX—ST. PIERRE, MIQ.—ST. JOHN'S, Nfld. SERVICE

S. S. "SABLE I."

(Passengers and Freight)

Leaves Halifax . . . Dec. 19th; Jan. 2nd for St. Pierre & St. John's.

Leaves St. Pierre . . . Dec. 22nd; Jan. 5th for St. John's

Leaves St. John's . . . Dec. 26th; Jan. 3th for St. Pierre & Hx.

Leaves St. Pierre . . . Dec. 27th; Jan. 10th for Halifax.

FARE: \$30.00 between Halifax and St. John's; \$30.00 between Halifax and St. Pierre; including meals and accommodations. Apply:

HARVEY & COMPANY, LIMITED, St. John's, Newfoundland.
FARQUHAR STEAMSHIP COMPANIES, Head Office, Hx., N.S.
dec24.th.f.t

Furness Line Sailings

Liverpool to St. John's	St. John's to Halifax	Boston to Halifax	Halifax to St. John's	St. John's to Liverpool
SACHEM	Jan. 3rd	Jan. 10th	Jan. 15th	Jan. 18th
DIGBY				

These steamers are excellently fitted for Cabin passengers. Passengers for Liverpool must be in possession of Passports.
Through rates quoted on all cargo from U.S. and Canadian Ports.

For freight rates or Passage and other particulars, apply to

Furness, Withy & Co., Limited

WATER STREET EAST ST. JOHN'S, Nfld.
PHONE 130.

Goods in Stock Dec. 4th.

400 Bbls. APPLES—Kings, Baldwin's and Stars.
50 Boxes Nova Scotia Wagner APPLES—125's.
50 Boxes California APPLES (Red Stock)—125's.
150 Kegs GRAPES (Green).
70 Cases ORANGES (Valencia's)—300's.
200 Bags ONIONS—Silver Peel.
Also, PARSNIPS, CARROTS and BEETS.
PRICES RIGHT.

BURT & LAWRENCE

14 NEW GOWER STREET.

Forty-Six Years in the Service of the Public—The Evening Telegram