

## CHRISTY'S CELEBRATED HATS

Combine the essence of Comfort with the last word in Smartness of Style.

The New Shapes for Spring in Soft and Stiff Felts outclass all previous efforts, and are now on display.

NO ADVANCE IN PRICE.

**\$3.00.**

Sole Agents for Newfoundland:

**SMYTH'S.**

GEO. F. KEARNEY, Manager.

## Evening Telegram

W. J. HERDER, Proprietor  
W. F. LLOYD, Editor

WEDNESDAY, April 19, 1916.

### The Budget.

Yesterday, the Minister of Finance, Hon. M. P. Cashin, made his Budget Speech, the salient features of which we propose to give succinctly.

At the end of June 30th last, the deficit was \$755,583. To meet this, the balance of the Nest Egg, \$198,150.64 was taken from the Cash Reserves, \$200,000 was borrowed from the Bank of Montreal, and the remaining deficit was carried to the current year's account.

For the current year, ending June 30th, 1916:

Revenue to March 31st. \$2,999,665.82  
Estimated Revenue from April 1st to June 30th. 1,136,768.36  
Estimated Death Duties and Pit Prop Tax. 25,000.00

Total Revenue. \$4,160,834.19

Total Expenditure (partly estimated). 4,100,000.00

Surplus. \$60,834.18

This would be just about sufficient to clear off the balance of the deficit of last year that was not met by the Bank of Montreal loan and the use of the last of the Nest Egg.

ESTIMATES FOR NEXT YEAR.

From July 1st, 1916, to June 30th, 1917:

Estimated Expenditure. \$4,165,000

Supplemental Supply less Drop Balance. 25,000

Total Expenditure. \$4,190,000

The Minister expects a revenue which will about meet with the expenditure. The loss of revenue from alcoholic liquors, he expects, will be partly met by duties on extra goods purchased from savings on money spent on alcoholic beverages, an increased income from the pit prop tax and the death duties. If he finds himself out in his calculations, he proposes an early meeting of the Legislature next year to meet the difficulty.

In the budget set forth yesterday he proposed no increase in taxation.

### IMPORTS.

The Minister gave the following table of imports:

1910-11	\$13,333,310
1911-12	14,733,499
1912-13	16,012,365
1913-14	15,193,726
1914-15	12,350,786

There has been a very substantial increase in imports during the past nine months.

The story of the Revenue received on imports make this clear:

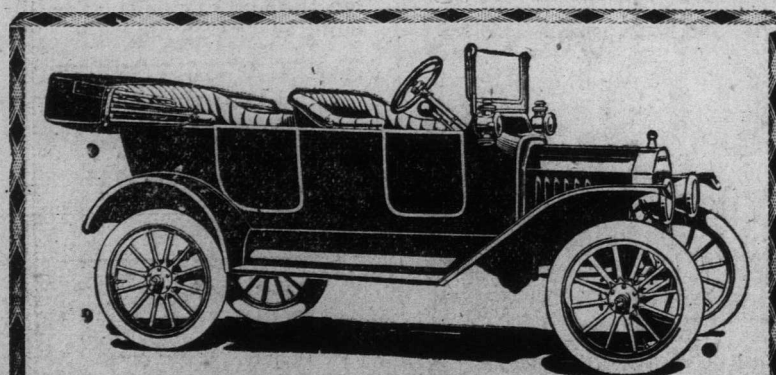
1910-11	\$2,398,815.25
1911-12	3,134,639.90
1912-13	3,283,304.35
1913-14	3,099,427.53
1914-15	2,744,567.85

The Customs' Revenue for the nine months of this year was \$2,712,000, or very little below that received for the twelve months of the previous year.

### Cape Report.

Special to Evening Telegram.

CAPE RACE, To-day. Wind E. Light, dense fog. No vessels sighted since last report. Bar. 19.10; Ther. 45.



FORD—The Universal Car!

Buy one, not because it is a cheaper Car, but because it is a better Car. Book your order now, as stock on hand won't last long. Price completely equipped and ready for the road. \$600.00

5-SEATING TOURING CAR. RUNABOUT. \$725.00

GEO. M. BARR, Agent, St. John's.

### Here and There.

**BAYONET FIGHTING.**—The volunteers now in training are keen on the bayonet fighting which is now a portion of their training at the Armoury.

**ELLIS' for Fresh Poultry.** apr19.1f

**NOW WELL.**—We are pleased to learn that Mr. D. Kent, clerk in the Supreme Court, who has for some time been ill, is able to be around again almost fully recovered.

**Stafford's Liniment is sold in over 500 stores. Save the outside Green Wrapper. See advertisement.**—mar31.1f

**FOR COT FUND.**—Mr. D. M. Baird is in receipt of \$194 for the Cot Fund, which amount was donated by the sailing crew of the s.s. Erik.

**STEERO IS COMING.** apr5.1f

**DESERTER ARRESTED.**—This morning a seaman, who was arrested last night was before court charged with deserting the s.s. Lila D. Young, now in port. He was remanded to be put on board when the vessel is ready for sea.

**To Prevent The Grip.**

When you feel a cold coming on, stop it by taking LAXATIVE-BROMO QUININE. It destroys germs, acts as a Tonic and Laxative and keeps the system in condition to throw off Colds and Grip. There is only one "BROMO QUININE." E. W. GROVE'S signature on box. 25c. wed.

### The Dangers of Gasoline!

Written by Request of the Select Committee on the Inflammable Oils' Act, by D. James Davis, B.Sc., F.C.S., Member of the Society of Public Analysts, (England), Government Analyst.

People who handle gasoline should not for a moment forget its dangerous character. It is highly inflammable vapour and in the summer months it is liable to form an inflammable vapour at the temperature of the air. A small volume of this vapour forms a highly explosive mixture with a large volume of air. One cubic foot of gasoline vapour mixed with, roughly, 55 cubic feet of air will burn with explosive violence on the application of a lighted match, or some other naked light.

If the oil is kept in a store-room it is essential that the room should be well ventilated, otherwise the small volume that might be lost during the filling up of tanks, etc., will soon vaporize and mix with the stationary air of the room forming an explosive mixture.

Imagine a small, badly ventilated shed or outhouse, 6 feet long, 6 feet wide and 10 feet high. Suppose that two pints of gasoline have leaked and vaporized in the building. The vapour and air would then be in the right proportions to explode with great severity on the application of a match or some other naked light.

Any person before handling gasoline, or before entering a gasoline store-house, should remove any matches that he may have about him. Red-headed matches contain phosphorus, when exposed to damp air, burn slowly, and it is within the bounds of possibility that the glow arising from the very slow burning of the matches might ignite the mixture of gasoline vapour and air.

Gasoline should be stored in a well-ventilated store-house removed from any other building or buildings. In the absence of a suitable store-house the gasoline cans should be stored either underground or kept under water, especially so during the summer months; the gasoline cans would not then be exposed to variations of temperature. The cans should on no account be left exposed to direct sunlight.

April 18th.

## Vigorol

Weak and run-down. Tired and sluggish. Eyes feel heavy. Headaches and feverish. Don't allow these symptoms to continue. Tone yourself up. Get a bottle of VIGOROL, it will do it, and do it quickly. Every spring one needs a good tonic. VIGOROL acts as a general house-cleanser; it goes after every organ and cleanses it. Get it to-day at all drug stores.

### First Gulf Steamer at Channel!

Supt. Stott, of the Postal Telegraphs, received a message from Codroy this morning stating that the s.s. Seal had arrived there from the Gulf; sealfishery to land men there and reported for 30,000 seals. Though the number is doubted as half of it would be a load for the Seal, a similar message was received by the Reid Coy. It is thought the number was meant for 3,000. The Seal will likely arrive here to-morrow night to discharge her cargo.

### Here and There.

**THE STEPHANO.**—The s.s. Stephano is due here to-morrow evening from Halifax, which port she left last night.

**STEERO IS COMING.** apr5.1f

Under the management of Misses Wood and Coen, OPERETTA, in aid of W. P. A., in Canon Wood Hall, on Wednesday, May 3rd, and Matinee May 6th.—apr19.26

### Here and There.

**BAYONET FIGHTING.**—The volunteers now in training are keen on the bayonet fighting which is now a portion of their training at the Armoury.

**ELLIS' for Fresh Poultry.** apr19.1f

**NOW WELL.**—We are pleased to learn that Mr. D. Kent, clerk in the Supreme Court, who has for some time been ill, is able to be around again almost fully recovered.

**Stafford's Liniment is sold in over 500 stores. Save the outside Green Wrapper. See advertisement.**—mar31.1f

**FOR COT FUND.**—Mr. D. M. Baird is in receipt of \$194 for the Cot Fund, which amount was donated by the sailing crew of the s.s. Erik.

**STEERO IS COMING.** apr5.1f

**DESERTER ARRESTED.**—This morning a seaman, who was arrested last night was before court charged with deserting the s.s. Lila D. Young, now in port. He was remanded to be put on board when the vessel is ready for sea.

**To Prevent The Grip.**

When you feel a cold coming on, stop it by taking LAXATIVE-BROMO QUININE. It destroys germs, acts as a Tonic and Laxative and keeps the system in condition to throw off Colds and Grip. There is only one "BROMO QUININE." E. W. GROVE'S signature on box. 25c. wed.

### The Dangers of Gasoline!

Written by Request of the Select Committee on the Inflammable Oils' Act, by D. James Davis, B.Sc., F.C.S., Member of the Society of Public Analysts, (England), Government Analyst.

People who handle gasoline should not for a moment forget its dangerous character. It is highly inflammable vapour and in the summer months it is liable to form an inflammable vapour at the temperature of the air. A small volume of this vapour forms a highly explosive mixture with a large volume of air. One cubic foot of gasoline vapour mixed with, roughly, 55 cubic feet of air will burn with explosive violence on the application of a lighted match, or some other naked light.

If the oil is kept in a store-room it is essential that the room should be well ventilated, otherwise the small volume that might be lost during the filling up of tanks, etc., will soon vaporize and mix with the stationary air of the room forming an explosive mixture.

Imagine a small, badly ventilated shed or outhouse, 6 feet long, 6 feet wide and 10 feet high. Suppose that two pints of gasoline have leaked and vaporized in the building. The vapour and air would then be in the right proportions to explode with great severity on the application of a match or some other naked light.

Any person before handling gasoline, or before entering a gasoline store-house, should remove any matches that he may have about him. Red-headed matches contain phosphorus, when exposed to damp air, burn slowly, and it is within the bounds of possibility that the glow arising from the very slow burning of the matches might ignite the mixture of gasoline vapour and air.

Gasoline should be stored in a well-ventilated store-house removed from any other building or buildings. In the absence of a suitable store-house the gasoline cans should be stored either underground or kept under water, especially so during the summer months; the gasoline cans would not then be exposed to variations of temperature. The cans should on no account be left exposed to direct sunlight.

April 18th.

## Vigorol

Weak and run-down. Tired and sluggish. Eyes feel heavy. Headaches and feverish. Don't allow these symptoms to continue. Tone yourself up. Get a bottle of VIGOROL, it will do it, and do it quickly. Every spring one needs a good tonic. VIGOROL acts as a general house-cleanser; it goes after every organ and cleanses it. Get it to-day at all drug stores.

### First Gulf Steamer at Channel!

Supt. Stott, of the Postal Telegraphs, received a message from Codroy this morning stating that the s.s. Seal had arrived there from the Gulf; sealfishery to land men there and reported for 30,000 seals. Though the number is doubted as half of it would be a load for the Seal, a similar message was received by the Reid Coy. It is thought the number was meant for 3,000. The Seal will likely arrive here to-morrow night to discharge her cargo.

### Here and There.

**THE STEPHANO.**—The s.s. Stephano is due here to-morrow evening from Halifax, which port she left last night.

**STEERO IS COMING.** apr5.1f

Under the management of Misses Wood and Coen, OPERETTA, in aid of W. P. A., in Canon Wood Hall, on Wednesday, May 3rd, and Matinee May 6th.—apr19.26

## Fresh Stock of Goods for The Easter Season!

HAMS, BACON, COOKED MEATS, TURKEYS, CHICKEN, NEW YORK BEEF, ROYAL SCARLET BRAND BEET, ASPARAGUS, CORN, PUMPKIN, SPINACH, HONEY, ETC. HEINZ'S SPECIALTIES, INDIA RELISH, TOMATO CHUTNEY, CHILI SAUCE, SWEET PICKLES, PEANUT BUTTER, ETC. McVITI & PRICE'S, HUNTLEY & PALMER'S BISCUITS—New stock. LOVELL & COVELL'S FAMOUS CHOCOLATES & CARAMELS. WILBUR'S CHOCOLATE BUDS, MILK CHOCOLATE ETC. CIGARETTES—Albany and Westminster Brands. CIGARS—Havana, Jamaica, Indian and Dutch.

## AYRE & SONS, LTD.,

GROCERY DEPARTMENT.

## Comfortable, Closefitting, Ready-to-Wear



OF SATIN, with Large Double BOW, in Navy and White, Black and White, Navy and Rose, Plain Brown, Navy and Sax, etc.,

**\$1.30 each.**

SEE THEM IN OUR WINDOW.

SPECIAL—Watch for our announcement on Thursday for BIG EASTER SPECIAL.

## S. MILLEY.

## NOTICE!

TO ALL LADIES INTERESTED IN

## A NEW HAT

For the coming Easter and Spring.

We announce the arrival and opening of our Spring Shipment of

## Hats, Flowers, etc.

The last word in style and design at our usual

Moderate Prices.

## A. & S. RODGER

### Easter

5 doz. only. Baskets Japan. ing hats, but dies, that w 17c. each. Saturday.

### BA

CHILDREN. To be had in pair. Thers. LADIES. 300. 10. 60c. pair. Th

### BR

### Pillow

Plain Am. size 21 x 26. dressing. ends. Thursday &

### Barbers

50 doz. W. of extra cuts. Remond 7-10 each, Thurs day & Sat

### Mantle

12 pieces of tel Drapery. colors of Gold. Special, per

### Mantle

Another lot in Tapestry. assorted col. Reg. 20c. yad day and Sat

### Blind

30 doz. in perior. mab. wood base. Buff and Special, 2 for

### Table

Fawn. Cr. size 21 x 26. in assorted. well. Thurs

### Table

Small. Ch. Battenburg. colors. Nite. Reg. 10c. Sat day and Sat

### Table

Small. Ch. Battenburg. colors. Nite. Reg. 10c. Sat day and Sat

### Table

Small. Ch. Battenburg. colors. Nite. Reg. 10c. Sat day and Sat

### Table

Small. Ch. Battenburg. colors. Nite. Reg. 10c. Sat day and Sat

### Table

Small. Ch. Battenburg. colors. Nite. Reg. 10c. Sat day and Sat

### Table

Small. Ch. Battenburg. colors. Nite. Reg. 10c. Sat day and Sat

### Table

Small. Ch. Battenburg. colors. Nite. Reg. 10c. Sat day and Sat

### Table

Small. Ch. Battenburg. colors. Nite. Reg. 10c. Sat day and Sat

### Table

Small. Ch. Battenburg. colors. Nite. Reg. 10c. Sat day and Sat

### Table

Small. Ch. Battenburg. colors. Nite. Reg. 10c. Sat day and Sat

### Table

Small. Ch. Battenburg. colors. Nite. Reg. 10c. Sat day and Sat

### Table

Small. Ch. Battenburg. colors. Nite. Reg. 10c. Sat day and Sat

### Table

Small. Ch. Battenburg. colors. Nite. Reg. 10c. Sat day and Sat

### Table

Small. Ch. Battenburg. colors. Nite. Reg. 10c. Sat day and Sat

### Table

Small. Ch. Battenburg. colors. Nite. Reg. 10c. Sat day and Sat