

"ST. AUGUSTINE"
REGISTERED

The Perfect Communion Wine

In use in hundreds of churches in Great Britain, West Indies, The United States, & etc.

Cases 12 Qts. \$4.50; 24 Pts. \$5.50 F.O.B. Brantford.

J. S. Hamilton & Co. Brantford
ONTARIO.

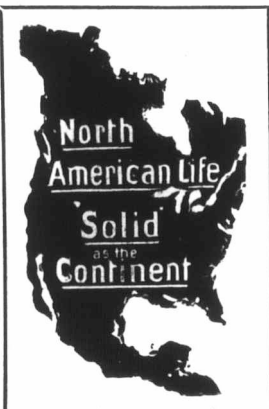
Manfrs. and Props. "St. Augustine Wine"

Telephone Main 7405

We are equipped to produce Printing Matter that will attract attention anywhere. Our prices are inducing and should attract the shrewd business man—try us.

The Monetary Times Printing Co., of Canada, Limited

62 Church St., Toronto, N.-W. Cor. of Court St.



The Forty-fourth Anniversary of Confederation

finds Canada a strong and vigorous nation in the forefront of progress and prosperity. Your own birthday anniversary comes around with frequent regularity, reminding you of the rapid flight of time with all its opportunities.

If you have not already taken full advantage of the opportunity afforded of insuring your life it will be well for you to do so at once.

And remember each succeeding birthday anniversary that you allow to pass only adds to the cost and makes it more difficult to secure a policy.

Consult one of our Representatives to-day or write to the

North American Life Assurance Company

Home Office, Toronto

BELLS.

Steel Alloy Church and School Bells. Send for Catalogue. The C. S. BELL CO., Hillsboro, O.

Special Coronation services were held on June 22nd in St. Simon's, Philadelphia, and in Trinity Church, New York, respectively.

A Physician's Testimony for Labatt's Ale

"We find that the ale uniformly and well agreed with the patients, that it stimulated the appetite, and thereby increased nutrition. The taste, likewise, is always highly spoken of. In nervous women, we found that a glass at bedtime acted as a very effective and harmless hypnotic."—SUPERINTENDENT OF LARGE U. S. HOSPITAL.

P. BURNS & CO.

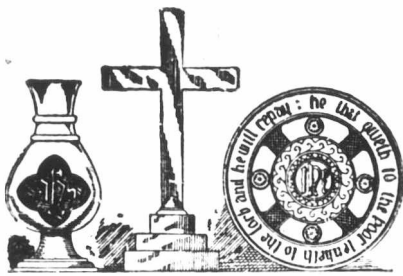
WHOLESALE AND RETAIL DEALERS IN

COAL AND WOOD

HEAD OFFICE: 49 King Street East, Toronto

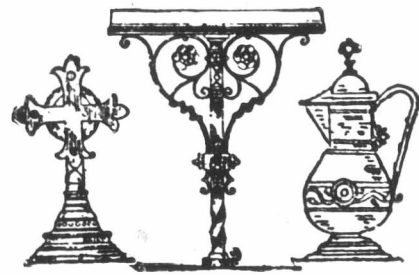
ESTABLISHED 1856. TELEPHONE 131 AND 132

Office and Yard, FRONT ST. near BATHURST. Telephone No. 449 and 2110
Office and Yard, PRINCESS STREET DOCK. Telephone No. 190



CHURCH BRASS WORK of every description made to order on shortest notice. Designs furnished and satisfaction guaranteed.

KEITH & FITZSIMONS, LIMITED
111 King Street West, Toronto



EAGLE AND RAIL LECTERNS

Altar Rails, Crosses, Vases, Dials, etc., Candlesticks, Vesper Lights, Memorial Brasses, Chandeliers, and Gas Fixtures, Communion Services, made or refinished. Electrical Contractors

CHADWICK BROS.

Show Room 193 East King St. Hamilton
Factory, Oak Avenue, near Barton St.
Send for Catalogue

Let us start sending you [Telephone Main 14 or Main 1947]

Belle Ewart Ice

NOW. Will save many times its cost during the summer.
Belle Ewart Ice Company., 156 Yonge Street (Kent Building)

Are Your Feet Comfy?

If not, drop in and try on a pair of our cool canvas ties or Oxfords, the ideal summer footwear.

BLACHFORD
114 Yonge Street

While digging at the south side of Winchester Cathedral in connection with the preservation work now in progress there the workmen have uncovered at a depth of from six to eight feet the remains of a wall, supposed to be part of a Roman bath. The wall is about twelve feet long, and at the excavated end it terminates in a circular sweep, the end of which is lost beneath the cathedral foundations. A few feet eastwards what is believed to be the remains of a Roman stable have been unearthed.



The Bishop of New York recently confirmed thirteen candidates in the chapel of the Good Shepherd on Blackwell's Island, the average age of whom was 66 years, and there was but one woman candidate.

The Rev. I. A. McGrew, the senior curate of St. Paul's Chapel of Trinity parish, New York, was presented lately with a handsome silver loving cup by the members of the Young Men's club of the chapel, which he had re-organized, on the eve of his departure to enter upon a new sphere of work elsewhere.

On a recent Sunday, in St. John's, Oban, the Bishop dedicated the gifts added since the church was opened on August 17th. These included a handsome Baldachino in carved oak, erected over the font by Miss Elizabeth MacDougall, of MacDougall, in memory of her sister, Miss Louisa MacDougall; and beautiful sanctuary lamps presented for the adornment of the sanctuary by the Lady Constance Emmott, in memory of her husband, Mr. Charles Emmott. Both gifts have special appropriateness, and are valued additions to the interior furnishing of a beautiful House of Prayer.

During June

The Great-West Life moved into its new Home Office on Lombard Street, Winnipeg.

Less than 19 years old, the Company goes into these permanent premises with a Business in force of \$60,000,000, representing over 33,000 Policies, with assets exceeding \$8,500,000, and with a yearly income approaching \$3,000,000.

This success has been built upon the solid foundation of unequalled

Results to Policyholders.

Ask for printed matter.

The GREAT-WEST LIFE ASSURANCE COMPANY

HEAD OFFICE, - WINNIPEG

The Pamphlet, "Visible Evidence" shows, in a new way, the unique record of The Great-West Life.

TARTAN

Steamer and Motor Rugs

Made of fine pure Saxony Wool in various combinations of bright and dark Tartans or plain colors in the patterns of the principal SCOTTISH CLANS, FAMILIES and REGIMENTS in various sizes, qualities and weights, etc.

\$5.00 \$6.00 \$7.00 \$8.00 \$10.00

Send for Illustrated Price List.

JOHN CATTO & SON
55-61 King St. East, Toronto



The Testimony of Science to the Credibility of the Book of Jonah

A VINDICATION OF THE NARRATIVE OF HIS ADVENTURE WITH THE WHALE

By **Rev. J. W. BEAUMONT, D.D., M.D.**

In Pamphlet Form, Price Five Cents.

Canadian Churchman Office
36 Toronto Street, Toronto, Ont.

When writing to or purchasing from Advertisers mention "The Canadian Churchman."

TORONTO
Subscription
NOTICE.
Toronto ow
Advance, \$
ADVERTISE
ADVERTISE
medium for
Church Jou
BIRTHS, I
Deaths, etc
THE PAPER
Family P.
Canada, an
CHANGE C
not only the
also the on
DISCOUNT
received, it
tinue the p
dollars per
RECEIPTS
tion is paid
postage sta
or four we
CHECKS.
fteen cen
POSTAL P
CORRESP
of the CAN
than Frida
Address all
Phone—
Offices—
Subscr
PAID \$
\$1.00.
scription
label on
subscrip
NOTI
the Unit
advance,
Le
Morning
Evening
Morning
Evening
Morning
Evening
Morning
Evening
Morning
Evening
A
Mornin
Evening
A
Mornin
Evening
Apr
after T
organist
Cathedr
the Nev
in other
F
Holy
Proce
Offer
Child
S
Holy
Proce
Offer
Child
Gene