

MURAL DECORATION.

Having engaged a practical and competent man, thoroughly acquainted with the execution of all styles of decoration of Churches in Europe and America, we are prepared to submit schemes of colour for any contemplated work, at prices within the reach of all parishes.

Preliminary coloured sketches will be forwarded on application to
COX SONS, BUCKLEY & CO.,
NO. 8 EAST FIFTEENTH STREET NEW YORK CITY, U. S. A.

BISHOP BETHUNE COLLEGE

ELLESMERE HALL,
OSHAWA.

Will open Monday, September 8th. For terms, etc., apply to the Lady Principal.

TRINITY COLLEGE SCHOOL, PORT HOPE.

MICHAELMAS TERM Will begin on Thursday, Sept. 11th.

Forms of Application for Admission, and Copies of the Calendar may be obtained from the
REV. C. J. S. BETHUNE, M.A., D.C.L.,
HEAD MASTER.

THE - BISHOP - STRACHAN - SCHOOL FOR YOUNG LADIES.

President, The Lord Bishop of Toronto. Vice-President, The Lord Bishop of Niagara.

This School offers a liberal Education at a rate sufficient only to cover the necessary expenditure, the best teaching being secured in every department.

At the last Examinations at Trinity and Toronto Universities, several pupils of the School attained good standing in honors.

During the vacation the school building has been completely refitted with heating and ventilating apparatus, and new bath rooms have been erected. The comfort of the boarders has been studied in every particular.

Early application is recommended, as there are only occasional vacancies for new pupils.

Annual Fee for Boarders, inclusive of Tuition, \$204 to \$252. Music and Paintings the only extras. To the Clergy, two-thirds of these rates are charged.

Five per cent. off is allowed for a full year's payment in advance.

The School re-opens on Wednesday, Sept. 9th. Apply for admission and information to
MISS GRIER, Lady Principal,
WYKEHAM HALL, TORONTO.

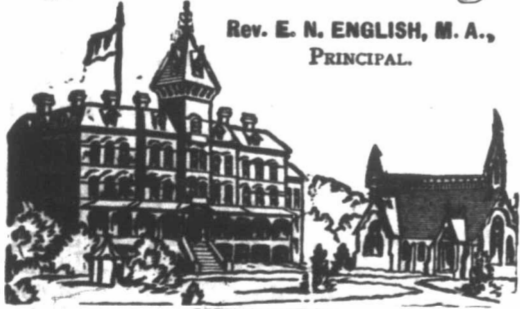
Incorporated 1868. **TORONTO** HON. G. W. ALLAN, President.

CONSERVATORY OF MUSIC

IN AFFILIATION WITH TRINITY UNIVERSITY
..... Fourth Year.
Over 1200 pupils last three years. Pupils may enter at any time. Send for 90 page calendar, containing announcements for present season, gratis, to
EDWARD FISHER, Musical Director.
Cor. Yonge St. and Wilton Ave.

Hellmuth College

Rev. E. N. ENGLISH, M. A.,
PRINCIPAL.



ONE OF THE
Most Complete Institutions in America
FOR THE
EDUCATION OF YOUNG LADIES.
CIRCULARS ON APPLICATION.
London, Ont., Canada.

MENEELY BELL COMPANY.

The Finest Grade of Church Bells.

Greatest Experience. Largest Trade.
Illustrated Catalogues mailed Free.

Clinton H. Meneely, Bell Co., Troy, N. Y.

Send for New Circular

ARCADE,
YONGE ST.

BRITISH AMERICAN Business College
The oldest and most reliable of its kind in the Dominion. All subjects pertaining to a business education thoroughly taught by able and experienced teachers.

29TH YEAR. * C. ODEA, Sec'y.

Will re-open September 1st.

Thos. Mowbray, ARCHITECTURAL SCULPTOR In Stone and Wood.



SUCH AS
**Altars, Fonts,
Reredos, Pulpits,**
Together with general architectural work for public and private buildings.
CHRISTIAN ART
A Specialty.

ADDRESS:
YONGE ST. ARDECA, TORONTO.

Treasures for Teachers.

FOR SCHOOL MUSIC TEACHERS.
SONG MANUAL. Complete Course in Music Reading. Books, 1, 30c.; 2, 40c.; 3, 50c. Per doz: 1, \$3; 2, \$4.20; 3, \$4.80. All by L. O. Emerson.
UNITED VOICES. Song Collection. 50 cts. \$4.80 per doz. By L. O. Emerson.

FOR HIGH SCHOOLS.
SONG GREETING. By L. O. Emerson. 60 cents., \$6 per doz.
FOR PIANO TEACHERS AND THEIR PUPILS.
Young Players' Popular Collection.....51 pieces
Young People's Classics.....52 "
Popular Dance Collection.....66 "
Fairy Fingers.....36 "
Easy Music. Each, \$1.00.
Classical Pianist.....42 "
Piano Classics, Vol. 1.....44 "
Piano Classics, Vol. 2.....31 "
Sabbath Day Music.....38 "
Classic 4-hand Collection.....19 duets.
Operatic Piano Collection.....15 operas
Easy Music. Medium Difficulty. Each, \$1.00.

Choir Leaders use large quantities of our OCTAVO MUSIC. 7000 different Sacred and Secular Selections, Glee, Quartets, Anthems, &c., &c. Price generally not more than 6 to 8 cts. per copy, and a few dimes buy enough for a society or choir. Send for lists. Books and music mailed for retail price.

OLIVER DITSON CO., BOSTON.

C. H. DITSON & CO., 867 Broadway, New York City.

ST. CATHARINES & TORONTO LINE The New and Fast Steamer LAKESIDE

plying daily between Toronto and St. Catharines, leaves Milloy's wharf, foot of Yonge-street, at 3.30 p.m., arriving at Port Dalhousie at 6 p.m., in time for outgoing trains. Returning leaves St. Catharines, Norris' wharf, 7.30 a.m., Port Dalhousie 8.30 a.m., calling at piers, arriving in Toronto 11.20 a.m. For tickets (family tickets a specialty) and full information apply C. P. R. offices, 118 King-street west, 24 York-street, Rose & Stewart, Parkdale; Electric Light Office, foot of Scott-street; Milloy's office, foot of Yonge-street, the principal hotels, and on board steamer. For low rates and quick despatch, travel and ship by this line.

N. J. WIGLE, Master. ALEX. COWAN, Purser

REREDOS.



Special designs submitted for work in hard wood with decorated panels, or in marble or stone with details of bronze or mosaics. Send for circular showing work recently executed, also for new designs.
J. & R. LAMB.
59 Carmine St., New York.

JONES & WILLIS, Church Furniture Mfrs

ART WORKERS IN
Metal, Wood, Stone and Textile Fabrics.
43 GREAT RUSSELL STREET,
(Opposite the British Museum.)
LONDON, W.C.
AND EDMUND STREET,
BIRMINGHAM, ENGLAND.
5 Bold St., LIVERPOOL.

DOMINION STAINED-GLASS CO. 77 RICHMOND ST. W., TORONTO.

Memorial Windows,
And every Description of Church and Domestic Glass.
Designs and estimates on application.
WM. WAKEFIELD. J. HARRISON.
Telephone 1470.



- N. T. LYON - STAINED - GLASS.

141 to 143 Church Street,
TORONTO, - - - CANADA.
Telephone 1702.

FOR CALENDARS of Bishop's College, and Bishop's College School, Lennoxville, P.Q., apply to the REV. THOMAS ADAMS, D.C.L., Principal and Rector.



BUY
MANTELS,
GRATES,
TILES
TA
Manufacturers'
Prices
from

Toronto Hardware Mfg. Co.,
1100 QUEEN ST. WEST,
TORONTO.

MERCHANTS' BANK OF CANADA.

Capital - - - - - \$5,700,000
Reserve - - - - - 2,335,000

BOARD OF DIRECTORS.
ANDREW ALLAN, Esq., President.
ROBT. ANDERSON, Esq., Vice-President.
Hector McKenzie, Esq., John Duncan, Esq.,
Jonathan Hodgson, Esq., H. Montagu Allan, Esq.,
John Cassils, Esq., J. P. Dawes, Esq.,
T. H. Dunn, Esq.,
George Hague, General Manager,
John Gault, Branch Superintendent.

BRANCHES IN ONTARIO AND QUEBEC.
Belleville, Kingston, Quebec,
Berlin, London, Renfrew,
Brampton, Montreal, Sherbrooke, Que.
Chatham, Mitchell, Stratford,
Galt, Napanee, Toronto,
Gananoque, Ottawa, St. John, Que.,
Hamilton, Owen Sound, St. Thomas,
Ingersoll, Perth, Walkerton,
Kincardine, Prescott, Windsor.

BRANCHES IN MANITOBA.
Winnipeg, Brandon

Agency in New York, 61 Wall St.
The position of this Bank, as to the amount of paid up capital and surplus, is the second in the Dominion.

A general banking business is transacted. Interest allowed at current rates upon deposits in the Savings Bank Department, where sums of one dollar and upwards are received. Deposit receipts are also issued bearing interest at current rates.

Toronto Branch, 13 Wellington St. West.
D. MILLER, Mgr. E. F. HEBDEN, Ass't Mgr.

ELIAS ROGERS & CO.,



COAL. LOWEST RATES. WOOD

HOMOEOPATHIC PHARMACY,

394 Yonge Street, Toronto,
Keeps in stock Pure Homeopathic Medicines, in Tinctures, Dilutions, and Pellets. Pure Sugar of Milk and Globules. Books and Family Medicine Cases from \$1 to \$12. Cases refitted. Vials re-filled. Orders for Medicines and Books promptly attended to. Send for Pamphlet.
D. L. THOMPSON, Pharmacist.

THE Canadian Churchman,

A Church of England Weekly Family Newspaper.

SUBSCRIPTION.—Two dollars per year, \$1.00 if paid strictly in advance. Single copies 5 cents each.

The CANADIAN CHURCHMAN is an ably edited Journal devoted to the best interests of the Church in Canada—and should be in every Church family in the Dominion. Send in your subscription to

FRANK WOOTTEN,
Box 2640, Toronto
Offices, 32 and 34 Adelaide St. East.

Ross Water Engine For Blowing Church Organs.

THE MOST
Economical
And Perfect
In the Market.

For further particulars address
J. G. GEDDES,
309 Main St., E.,
HAMILTON, Ont.

REFERENCES:
Rev. F. P. McEvay, Rector St. Mary's Cathedral Hamilton, Ont.
Rev. J. J. Craven, Rector St. Patrick's Church, Hamilton, Ont.
D. J. O'Brien, Esq., Organist St. Mary's Cathedral, Hamilton, Ont.
J. E. P. Aldous, Organist Central Presbyterian Church, Hamilton, Ont.