

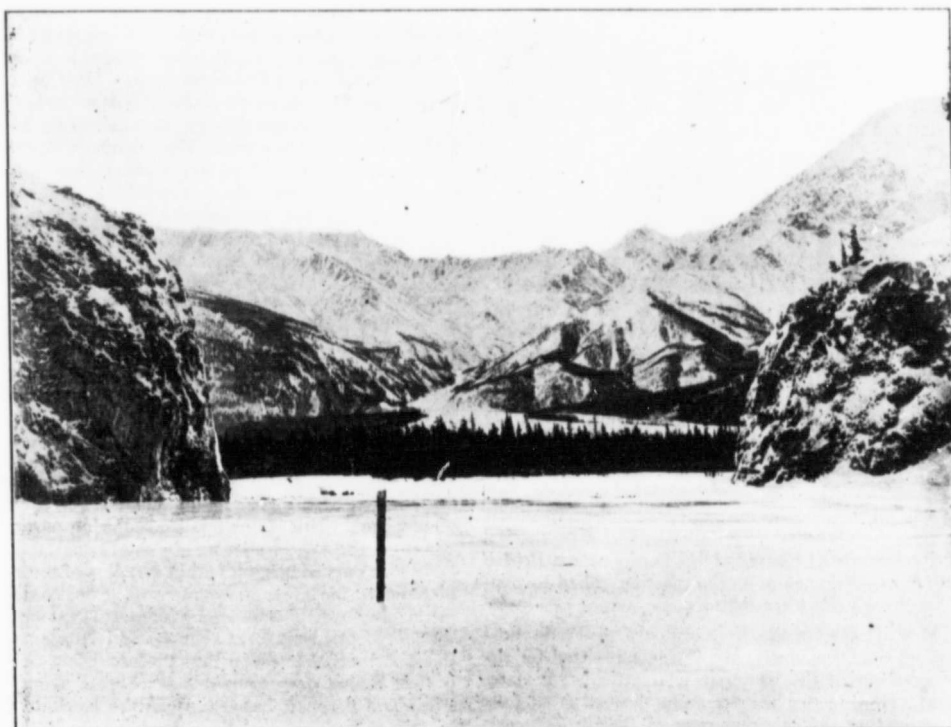
gradually descends for three miles to the Dezadeash River, which it follows for a distance of four miles to Marshall Creek, where some very good surface prospects have been found.

The next camping ground is at Bear Creek, at the head of Paradise Valley; and during the summer, or open season of navigation, it is possible to use small boats, of about two tons burden, between Canyon Creek and the head of the beautiful Paradise Valley, and a number of claims have been located upon this creek. The grade of the trail from Bear Creek thence is very gradual for eighteen miles, when there

really upper Snag River, the dividing line being about the centre, where a very deep canyon is located. From Slim River Landing, going up Slim River, the distances are as follows:

	Miles
From Slim River Landing to Sheep Creek...	2
From Slim River Landing to Vulcan Creek...	5 3/4
From Slim River Landing to Bullion Creek...	6
From Andy Harbour to Silver Creek.....	13

The gold obtained from the Alsek creeks is said to be very pure—much more so than that found near



A View Looking up Sheep Creek in the New Alsek District.

is a steep drop for four miles to Koo Lake, from which point a trail leads northward to Ruby and Fourth of July Creeks. The trails to Bullion Creek to the west from either Koo Lake, Andy Harbour or Klühne Lake, are in excellent condition. By the Andy Harbour route the trail crosses the south end of the lake to Slim River Landing. During the open season boats could be used to better advantage, the road around the shore of the lake being exceedingly rough and teaming difficult. At the mouth of Slim River, one is practically in touch with the entire surrounding district, including Christmas Creek, Snag River and Silver Creek. The latter creek is

Dawson—the value per ounce of specimens recently assayed being about \$18.

As yet, with the exception of the work on Ruby and Bullion Creeks, nothing in the nature of development has as yet been done in the district, and the work there has been largely impeded by an underground flow of water. The 42 ounces which was taken out of a hole on discovery on Bullion last fall has been followed by an encouraging yield of gold throughout the winter. It is not thought meanwhile that much gold can be taken from the district this season, though it is believed that many properties will be in condition to yield well in 1905.