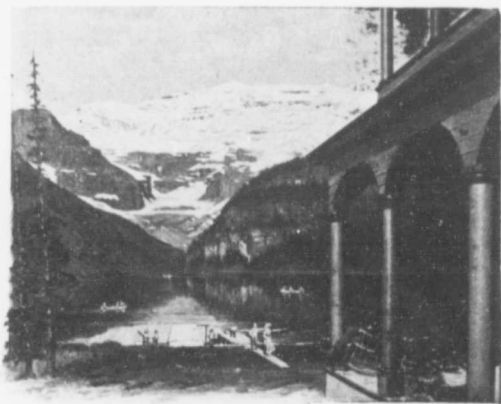


got from the saleswoman was: "Well, you see, some people like them that way." But she did not explain what sort of people these were. Perhaps if Algernon Sartoris, now of Port Hope, late Lieut. and Capt. U. S. Army, had been present he might have found in this incident, especially in the saleswoman's reply, proof that there is annexation sentiment in Canada. Were these immigrants from the American North Western States, that liked to see the stars and stripes "on top" even in a joke?



THE CHALET AT LAKE LOUISE

No attempt is made in these pages to describe in any detail the vastness and variety of this trans-continental journey. Its diversity of scenic beauty, from expansive prairie to awe-inspiring mountain, has been the theme of many a better pen than mine. The Annotated Time Tables of the Canadian Pacific Railway supply minute particulars of landscapes and industrial views which have awakened