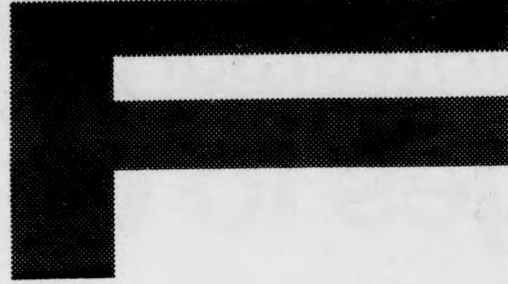


The new bus shelter: Temple or Utility?



'Whereas the genuine bus shelter bespeaks its function, its sheer size and crude detailing disclosing its bus-shelterness, the temple is light and lyrical, subtle and uplifting.'

by R. MACPHERSON

York has again defied the 1972 building moratorium and erected another structure. Together with the new Life Sciences and West Office buildings, the Keele campus has grown by three edifices in just under one year. The artless mass will deprecate it with titles such as "Bus Shelter," or some other tag they might conveniently fulminate; the more substantial sort who effects a less facile analysis will discover a wealth of substance and iconography.

The latter, unfortunately, will likely have little time for unimpeded meditations upon this temple, as the artless have already manifested their typical opportunism, and presently fill the buildings at regular intervals throughout the day (my advice to the perspicacious: you can obviate this difficulty by choosing the more auspicious hours of the early morning or evening).

Situated immediately west of the Burton Auditorium, it invites, by sheer proximity,

comparison with the bus shelter in front of the Ross. However, while ostensibly alike in form - indeed, similar materials have been utilized in both - the execution and more importantly the intention differ substantially. Whereas the genuine bus shelter bespeaks its function, its sheer size and crude detailing disclosing its bus-shelterness, the temple is tight and lyrical, subtle and uplifting.

The proportions are a felicitous dialogue of symmetry and asymmetry. The base unit is a

seven foot by four foot panel, which seems to have evolved in a dialectic with LeCorbusier's modular and the Destijlean thesis. It is minimalistic materially, quintessentially. Destijl, allowing a precise and objective geometry, yet universal for its concise basis of human physiology. Yet, we must ask, can this morality operate casually?

No, because in this structure, we have assessability, self-determination and permeability. An absence of doors/constraints allows and encourages participation: it stands thus somehow incomplete. As we enter the structure, the dualistic relationship resolves itself in a monistic one.

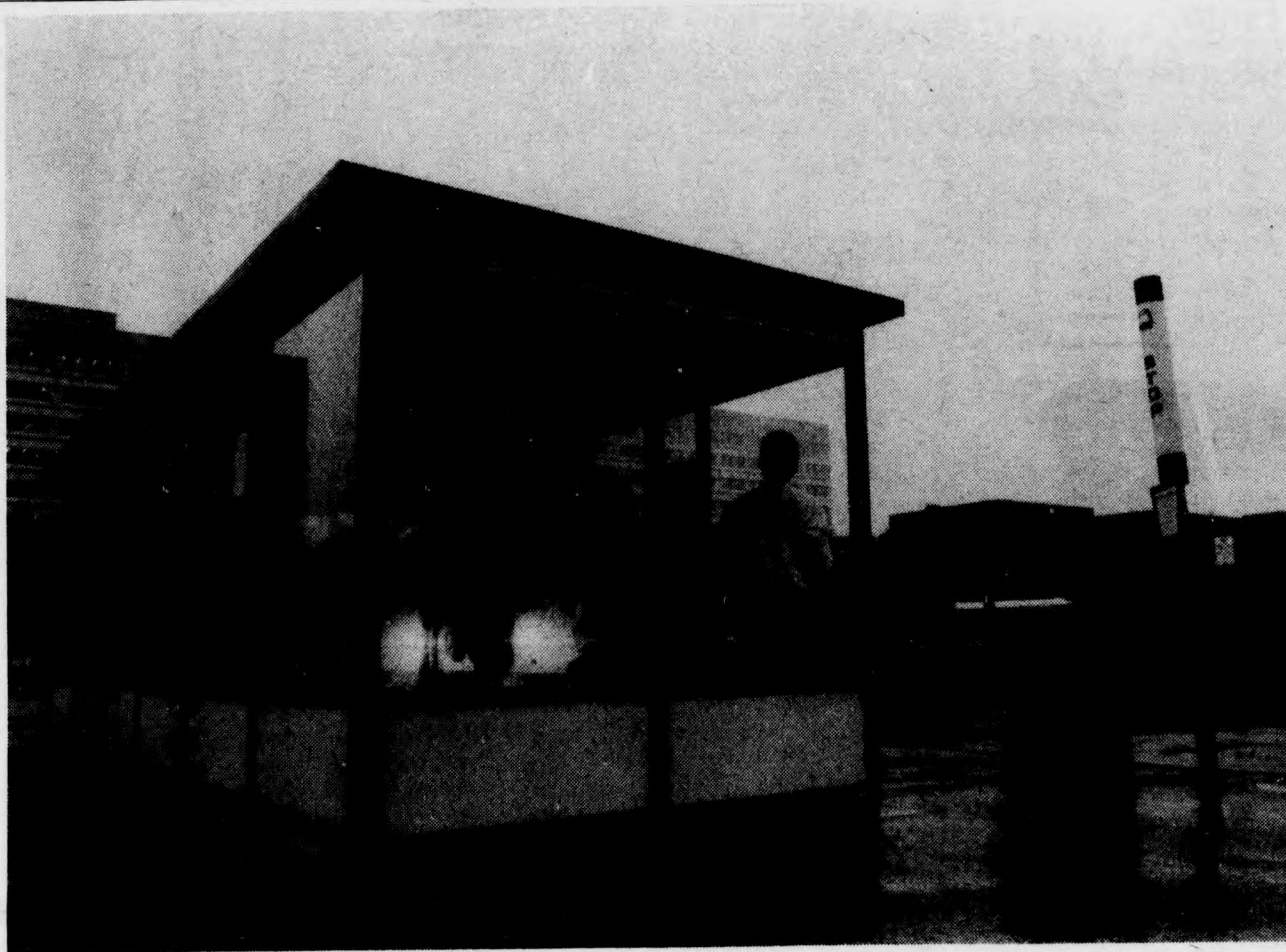
For the inherent principles of freedom, we should be celebratory - yet turgid self-interest guides the uninformed to the resolution least befitting the art. Look through the empty soul who apprehends nothing but function and utility; look through him and behold a temple on our grounds.

FACT SHEET

Location	NA
Height	NA
Width	NA
Depth	NA
Materials	NA



PHOTOS: GARY BLAKELEY



Pictured right and right, the subjects under discussion by Excal's resident bus shelter critic, R.D. 'Hank' Macpherson.

SKYDIVE!

- Professional Instruction
- Equipment Supplied
- Parachute Opened Automatically
- Jump Same Day
- Over 11,000 Trained

\$129



CALL OR WRITE:

PARACHUTE SCHOOL OF TORONTO LTD.
BOX 100, ARTHUR, ONTARIO N0G 1A0
(416) 532-JUMP (519) 848-3821

EARN A UNIVERSITY CREDIT AT HOME

Degree-level courses to improve your qualifications and career opportunities. Offered by radio, audio-cassette or correspondence. No entrance requirements. If you can do the work, you can take a course. Credits apply to programs at Atkinson College, York University and Ryerson Polytechnical Institute.

Fall courses in:

- NUTRITION
- GERONTOLOGY
- CANADIAN HISTORY
- PSYCHOLOGY
- POLITICS
- PUBLIC ADMINISTRATION
- ECONOMICS
- ACCOUNTING

For details:

Open College 297 Victoria St., Toronto, Ont. M5B 1W1
Phone (416) 595-0485

OPEN COLLEGE



FRANCIS FORD COPPOLA AND GEORGE LUCAS
PRESENT
A FILM BY PAUL SCHRADER



On November 25, 1970, Japan's most celebrated writer, Yukio Mishima, shocked the world.

mishima

a life in four chapters

A ZOETROPE STUDIOS/FILMLINK INTERNATIONAL/LUCASFILM LTD.

PRODUCTION "MISHIMA: A LIFE IN FOUR CHAPTERS"

Executive Producers: GEORGE LUCAS and FRANCIS COPPOLA

Starring: KEN OGATA · KENJI SAWADA

YASOSUKE BANDO · TOSHIYUKI NAGASHIMA

Production Design: EIKO ISHIOKA Music by: PHILIP GLASS

Director of Photography: JOHN BAILEY Written by: PAUL SCHRADER &

LEONARD SCHRADER Produced by: MATA YAMAMOTO and TOM LUDDY

Directed by: PAUL SCHRADER

DISTRIBUTED BY WARNER BROS. A WARNER COMMUNICATIONS COMPANY

OPENS EXCLUSIVE ENGAGEMENT
FRIDAY, SEPTEMBER 13
CUMBERLAND CINEMA 5