

The Canadian Spectator.

VOL. I., No. 34.

SATURDAY, AUGUST 24, 1878.

\$2.00 PER ANNUM.

ALL SHOULD READ
THE "CANADIAN SPECTATOR."
A HIGH-CLASS LITERARY WEEKLY JOURNAL,

Edited by the Rev. ALFRED J. BRAY.

NON-PARTISAN—NON-SECTARIAN,

TREATING ALIKE

On all the Most Important Questions of the Day.

SHIRTS! SHIRTS!

A. H. SIMS & CO.,

Montreal,
 MANUFACTURERS OF
 SHIRTS, COLLARS, AND CUFFS,
 WHOLESALE.

Orders from the trade solicited.

NEW CROP TEAS.

McGIBBON & BAIRD'S RETAIL PRICES.

Extra Breakfast Souchong	80c
Fine Breakfast Souchong	70c
Extra Breakfast Congou	60c
Choice Family Congou	50c
Good Family Congou	40c
Best Young Hyson	80c
Fine Young Hyson	70c
Superior Young Hyson	60c
Extra Choice Japan	60c
Superior Japan	50c
Choice Japan	45c
Good Japan	40c
Extra Oolong	70c
Finest Gunpowder	80c
Good Young Hyson	50c
Fair Young Hyson	40c

A reduction of 2½ cents on 10-lb Cattles, and 4 cents on 20-lb Cattles off these prices. Our fine Black and Green Teas are selected at places of growth for our own special trade. Samples sent on application.

OUR N. Y. COFFEE
 IS STILL THE FAVOURITE.

McGibbon & Baird
 221 ST. JAMES STREET,
 Branch—St. Catherine Street.

GENUINE NEW YORK SINGER SEWING MACHINES
 THE BEST IN THE WORLD.



Buy only the GENUINE.

Beware of COUNTERFEITS.

None genuine without our Trade Mark stamped on the arm of the Machine.

THE SINGER MANUF'G. CO. SOLD IN 1877
282,812 MACHINES,

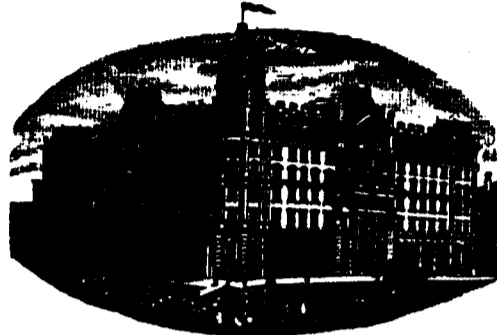
Being the largest number of Sewing-Machines ever sold by any Company in a single year. Machines sold on monthly payments.

THE SINGER MANUF'G. CO.,
 281 NOTRE DAME STREET,
 MONTREAL, P.Q.

EVANS & RIDDELL,
 PUBLIC ACCOUNTANTS
 EDWARD EVANS, Official Assignee,
 Western Chambers,
 No. 22 ST. JOHN STREET.

LIGHT!! LIGHT!!
LAMPS, CHANDELIERS, PENDANTS.
 Handsome display of finest goods, with all latest improvements.
PRICES LOW.
FRED. R. COLE,
 LAMP AND OIL DEPOT,
 98 ST. FRANCOIS XAVIER STREET.

THE PEOPLE'S FAVORITE,
 THE OLD ESTABLISHED
Cooks' Friend Baking Powder,
 PURE,
 HEALTHY,
 RELIABLE.
 Manufactured only by
W. D. McLAREN,
 55 and 57 College St.
 Retailed everywhere.



THE WINDSOR HOTEL, MONTREAL.

This Hotel has special advantages for the comfort of guests; with special parlours and promenades. Its location is high, which insures pure air, with views of the River and Mountain.
 Has a room for commercial men at 117 St. Francois Xavier Street.

Rates \$2.50 per day, and upwards.

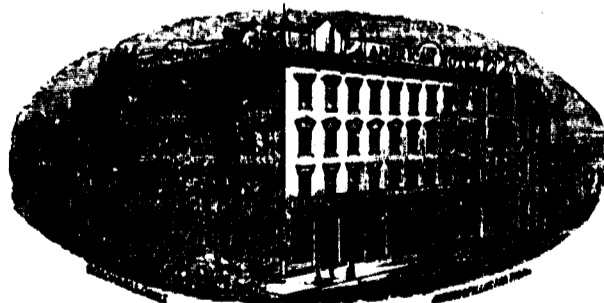
JAMES WORTHINGTON, Proprietor.



THE QUEEN'S HOTEL,---TORONTO, CANADA,

McGAW & WINNETT, PROPRIETORS.

Patronized by Royalty and the best families. Prices graduated according to rooms.



AMERICAN HOTEL, TORONTO.

Reduced the Rates so as to meet the Times.

Seventy fine Rooms at \$2.00, and seventy fine at \$1.50.

Incontestably the most central and convenient Hotel in the city, both for commerce and family travel. Three minutes walk from the Union and Great Western Depots; and first-class in every respect, except price.

GEORGE BROWN, Proprietor.

H. A. NELSON & SONS,
 IMPORTERS AND WHOLESALE DEALERS IN
**EUROPEAN AND AMERICAN FANCY GOODS, DRUGGISTS', TOBAC-
 CONISTS', STATIONERS' AND GROCERS' SUNDRIES.**

FANS—American, French and Japanese.
 POCKET-BOOKS in Russia, Calif, Morocco, Sheepskin, &c.
 Ladies' and Gents' TRAVELLING BAGS a specialty.
 BABY CARRIAGES, TOY CARTS, VELOCIPEDES, &c., &c.
 55 & 56 FRONT STREET, WEST,
 TORONTO.

91 to 97 ST. PETER STREET,
 MONTREAL.

Established 1845.
WILLIAM ELLIOT,
Successor to W. D. McLaren & Co.,
 IMPORTER AND DEALER IN
CHOICE GROCERIES,
 Corner St. Lawrence & St. Catherine Sts.,
 MONTREAL.
 Genuine Portland Kerosene Oil.

YOUTH WANTED.

WANTED—A well educated youth, for the Office of a public Company. Address X, this Office.

THE OTTAWA RIVER NAVIGATION CO.

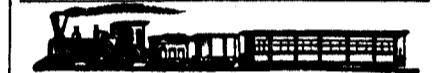
Daily direct river route between MONTREAL and OTTAWA. (Mail Steamers.) Passengers by Day Boats leave by 7:15 a.m. Train for Lachine, to connect with Steamer. Return Tickets at Reduced Rates.

Excursions.—For DAY TRIP through Lake of Two Mountains to Carillon, returning OVER RAPIDS in evening, take 7:15 a.m. Train for Lachine, to connect with Steamer. Fare, for round trip, \$1.25.

For Excursion OVER RAPIDS, Steamer leave Lachine on arrival of 5 p.m. Train from Montreal. Fare for round trip, 50c. Tickets at Principal Hotels and Grand Trunk Railway Office.

COMPANY'S OFFICE: 13 BONAVENTURE ST.
 Freight forwarded daily at Low Rates, from Freight Office, 87 Camillon Street, Canal Basin.

R. W. SHEPHERD, President.



MONTREAL & BOSTON AIR LINE AND SOUTH-EASTERN RAILROADS.

On and after MONDAY, July 1, this reliable, short and grand scenery route to Boston, New York, and all New England cities, passing Lake Memphremagog and White Mountains, will run

Day Express, with Parlor Car attached, leaving Montreal 9 a.m., arriving in Boston at 9.30 p.m.

Night Express, with Pullman Sleeping Car, leaving Montreal 4 p.m., arriving in Boston 8.25 a.m.

LAKE MEMPHREMAGOG

ALL RAIL ROUTE. BEAUTIFUL SCENERY. NO CHANGE OF CARS.

Passing through a country noted for its beautiful Lake, Valley and Mountain Scenery, unsurpassed on the Continent.

Leave Montreal for Newport at 9 a.m. and 4 p.m., Newport for Montreal, 3.38 a.m. and 4.40 p.m.

Fare to Newport and return, from Montreal, \$5.

Friday Excursion.—Tickets good from Friday p.m. to Monday p.m., price \$3.50, from Montreal to Newport and return, and to all Stations on S. O. Ry. at greatly reduced fares.

H. P. ALDEN, A. B. FOSTER,
 Genl Pass Agt S E Ry. Mgr S E Ry.

G. LEVE, Can Agt M & B Air Line and S E Ry.

EUROPEAN TRAVEL.

Cabin, Intermediate and Steerage Passage Tickets to all parts of Europe, by most reliable lines, sailing every WEDNESDAY, THURSDAY and SATURDAY from New York and Boston, at lowest rates.

Choice Staterooms secured by telegraph, free of charge. Offices: 202 St. James street, Montreal, and 271 Broadway, New York.

G. LEVE, General Agent.

SHORTEST ROUTE VIA CENTRAL VERMONT R. R. LINE.

Leave Montreal at 4 p.m. for New York, and 9 a.m., 4 and 6 p.m. for Boston.

Two Express Trains daily, equipped with Miller Platform and Westinghouse Air Brake. Sleeping Cars are attached to Night Trains between Montreal and Boston and Springfield, and New York via Troy; also, between St. Albans and Boston via Fitchburg, and Parlor Cars to Day Express between Montreal and Boston.

TRAINS LEAVE MONTREAL:

9 a.m., Day Express for Boston via Lowell.
 4 p.m., Mail for Waterloo.
 4 p.m., Night Express for New York via Troy, also for Boston via Fitchburg, arriving in Boston 7 a.m., and New York 7.15 a.m., next morning.
 6 p.m., Night Express for Boston via Lowell, and New York via Springfield.

GOING NORTH.

Day Express leaves Boston, via Lowell, at 8 a.m., via Fitchburg 7.30 a.m., Troy at 7.40 a.m., arriving in Montreal at 8.45 p.m.

Night Express leaves Boston at 5.35 p.m., via Lowell, via Fitchburg 6 p.m., and New York at 3 p.m., via Springfield, arriving in Montreal at 9 a.m.

Night Express leaves New York via Troy at 8.30 p.m., arriving in Montreal 12 m., excepting Saturday nights, when it will leave New York at 4 p.m., arriving in Montreal at 9 a.m. Sunday morning.

For Tickets and Freight Rates, apply at Central Vermont Railroad Office, 136 St. James street.

Boston Office, 322 Washington street.
G. W. BENTLEY, J. W. HOBART,
 Genl. Manager. Genl. Supt.

S. W. CUMMINGS,
 General Passenger Agent.
 Montreal, 10th June, 1878.