

**ARCHITECTS IN FURNISHING PLANS**

For all kinds of Steam Heating and Power

**MAY RECEIVE ADVICE OF OUR CONSULTING ENGINEERS**

WRITE US FOR INFORMATION.

**The Canadian Casualty and Boiler Insurance Co.**

Head Office : N. E. Cor. Adelaide and Victoria Streets, TORONTO.

Authorized Capital - - - \$1,000,000.  
Subscribed Capital - - - \$500,000.

President, ALEXANDER SUTHERLAND, D. D.  
Managing Director, A. G. C. DINNICK.

Vice-presidents, H. N. BATE and W. S. DINNICK.  
Chief Engineer, A. M. WICKENS.

**ROMAN THE PERFECT BUILDING STONE**

Manufactured by the most modern process from select building stone.

Cheaper than natural Stone.  
Absolutely fire proof material.  
No limit to its possibilities of application.

**STRENGTH  
AND  
BEAUTY**

Has the exact appearance of natural Stone and is stronger and more durable.

Made in any color or texture for exterior or interior finish.

Contracts executed for anything in Stone or Concrete

Correspondence and Inspection of our plant solicited.

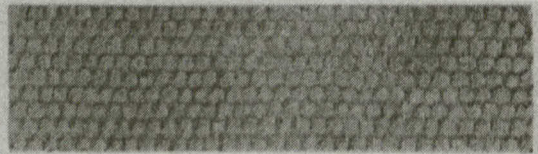
**STONE**

**THE ROMAN STONE CO., LIMITED, MARLBOROUGH AVE., TORONTO.**

When corresponding with advertisers please mention the CANADIAN ARCHITECT AND BUILDER.



ROCK FACE BLOCK.



DUCK BILL TOOLING

**STONE**

Manufacturers of all kinds of Concrete Stone or Concrete Terra Cotta for building purposes, such as Moulded Courses, Sills, Ornament, Monolithic Foundations, Hollow Blocks, or anything for building purposes, and will substitute Natural Stone or Terra Cotta, and can be made to resemble either.

We also Sell Machines for Making this Stone

**JARVIS CONCRETE COMPANY, LIMITED**

McKINNON BUILDING

TORONTO



CROSS TOOTH CHISELED



TOOLED FACE BLOCK