

very thick beard of very long, coarse hairs extending full length of tibia; middle femur clothed beneath nearly to distal extremity with long hair, posterior ventral row of bristles represented only by a few short bristles on about distal fifth; tibia clothed beneath on about its distal half with long, dense hair that anteriorly and posteriorly becomes coarser and beard-like, submesotibial bristle absent; vestiture of third ventral plate short and erect; genital segments dull orange, vestiture of both equally long, first large and without marginal bristles (possibly variable).

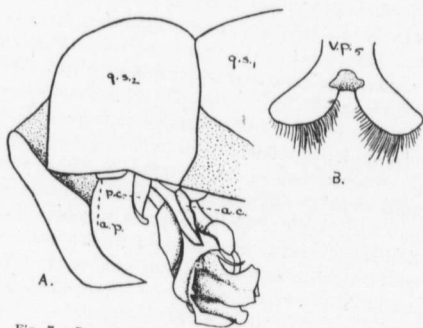


Fig. 7.—*Sarcophaga fulvipes dissidia*, n. subsp. A, Genital segments of ♂; B, fifth ventral plate of ♂.

Head.—Viewed from side, parafrontals and genæ with dark reflections. Breadth of front at narrowest part about three-fifths eye width; cheek height approximately one-third that of eye. Front prominent, sides of frontal vitta slightly converging backward. Second antennal segment dark; third about twice length of second; arista plumose on basal two-thirds. Back of head somewhat convex, with three rows of black cilia behind eyes, otherwise clothed with yellowish white hair that completely covers the metacephalon. Cheeks clothed with black hair. Gena with a single row of bristle-like hairs near lower eye orbit. Palpi dark.

Chaetotaxy.—Lateral verticals absent; vibrissæ inserted just above line of oral margin.

Thorax.—Mesonotum clothed with erect, almost bristle-like