

# Wyld, Grasett & Darling

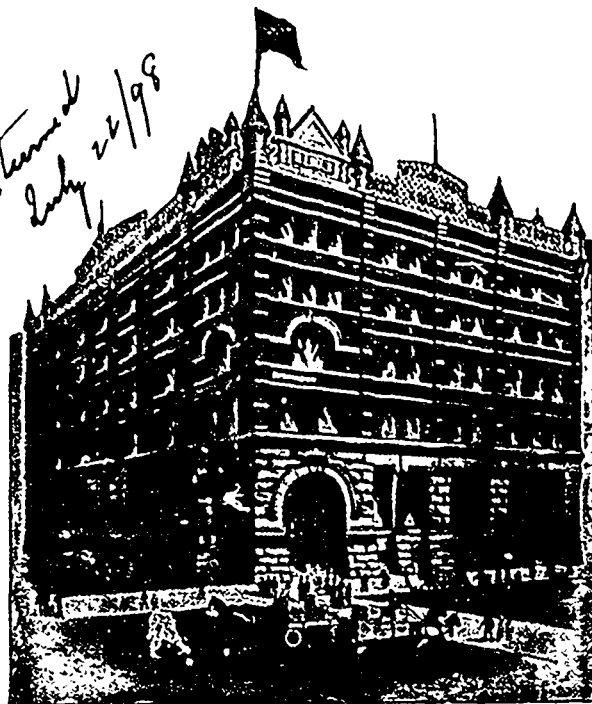
Departments



## Staples

-Including

Factory Goods  
Dress Goods  
Smallwares



Imported  
and  
Canadian

Woollens

Linens

-- AND --

Men's  
Furnishings

Stock for Fall trade will be found very complete and attractive in all departments. We are giving special attention to Smallwares, which will be kept fully assorted all the year round.

*Specialties: CASHMERE HOSE, WOOL HOSE, CASHMERE and RINGWOOD GLOVES, WOOL MITTS, Ribbons, Laces, Trimmings, and large range of LADIES' UNDERWEAR, Etc.*

Our Factory Goods---Pants, of all kinds, Overalls, Reefers and Ulsters---will be found extra value, well finished and right cut.

TRAVELLERS' AND LETTER ORDERS SOLICITED.

# Wyld, Grasett & Darling

TORONTO