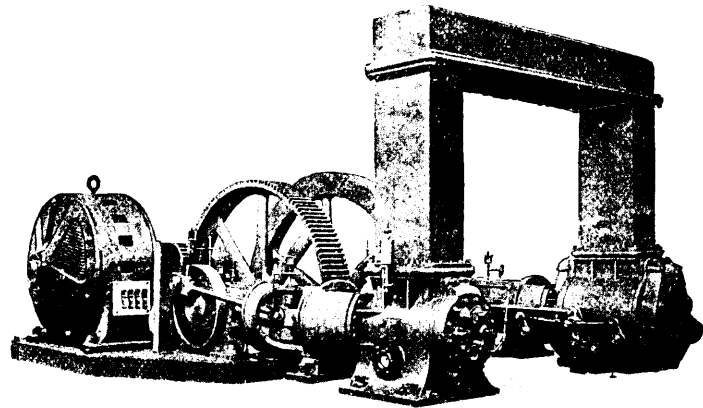


# Westinghouse Motors

For Driving Mine Apparatus

The installation in a Western Mine of a Westinghouse Motor to take the place of steam power in driving a 100 H. P. Compressor, reduced the average monthly operating cost from \$1800 to \$672.



Westinghouse Type C Induction Motor Driving Rand Air Compressor.

For particulars address nearest office of

**Canadian Westinghouse Co. Limited.**

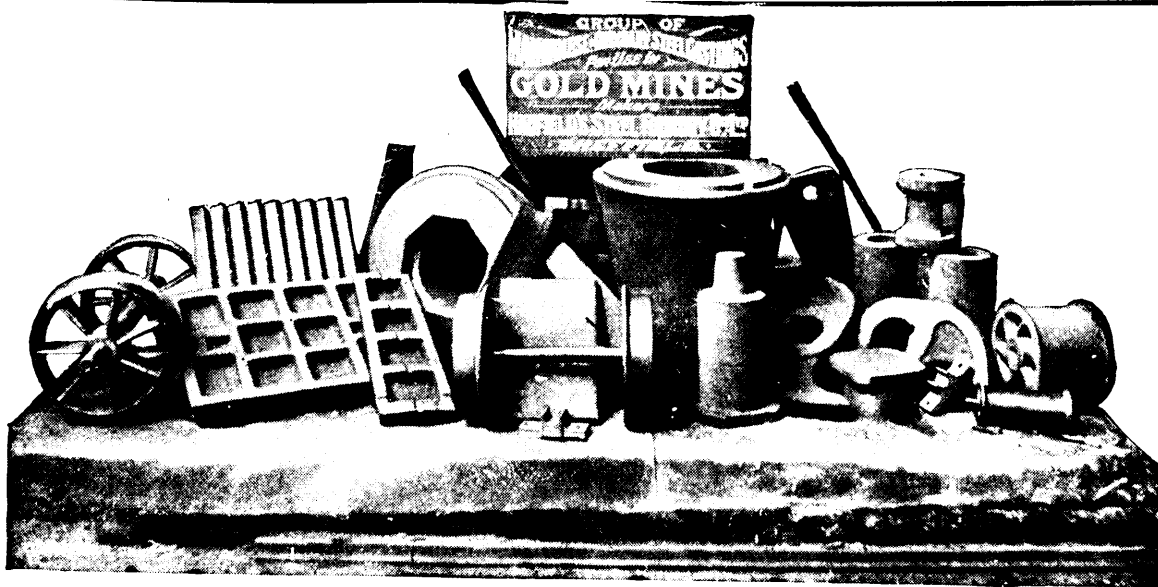
General Sales Offices and Works at Hamilton, Ontario.

Lawlor Bldg., King and Yonge Sts.  
Toronto.

District Offices :

Liverpool & London & Globe Bldg.  
Montreal.

**HADFIELD'S  
PATENT**



**MANGANESE  
STEEL**

Sole Representative of the Hadfield Steel Foundry Co., Ltd., Sheffield, for Canada

**PEACOCK BROTHERS,** Canada Life Building, MONTREAL.

**THOS. FIRTH & SONS, Ltd., Sheffield,**  
**Tool Steel and Rock Drill Steel**

ALWAYS CARRIED IN STOCK.

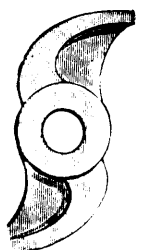


STAMP SHOES  
STAMP DIES

**SHOES AND DIES.**



CAMS, TAPPETS, BOSSES, ROLL  
SHELLS, CRUSHER PLATES.



**H. W. DeCOURTENAY & CO.**

86 and 88 MCGILL STREET

Agents for Canada.

MONTREAL.