

All Ingot Metals IN STOCK

A. C. LESLIE & CO., Limited, MONTREAL

Tin.—Prices are firm, at \$34 to \$34.50.

Zinc.—The tone is easy, at 5¼ to 6c.

CAMP SUPPLIES.

Beans.—Prime pea beans, \$2 to \$2.25 per bushel.

Butter.—Fresh made creamery, 23 to 23½c.

Canned Goods.—Per Dozen.—Corn, 80 to 85; peas, \$1.05 to \$1.15; beans, 85c.; tomatoes, 85 to 90c.; peaches, 28, \$1.65, and 38, \$2.65; pears, 28, \$1.60, and 38, \$2.30; salmon, best brands, 1-lb. talls, \$1.87½, and flats, \$2.02½; cheaper grades, 95c. to \$1.65.

Cheese.—The market ranges from 11c. to 11½c., covering all Canadian makes.

Coffee.—Mocha, 20 to 25c.; Santos, 15 to 18c.; Rio, 10 to 12c.

Dried Fruits.—Currants, Filiatras, 5¼ to 6¼c.; choice, 8 to 9c.; dates, 4 to 5c.; raisins, Valentias, 5 to 6¼c.; California, seeded, 7½ to 9c.; Evaporated apples, prime, 8 to 8½c.

Eggs.—No. 1 eggs are 20 to 21c.; select, 22 to 25c.

Flour.—Manitoba, 1st patents, \$5.90 per barrel; 2nd patents, \$5.40; strong bakers', \$5.20.

Molasses and Syrup.—Molasses, New Orleans, 27 to 28c.; Barbadoes, 40 to 45c.; Porto Rico, 40 to 43c.; syrup, barrels, 3¼c.; 2-lb. tins, a dozen to case, \$2.50 per case.

Potatoes.—Per 90 lbs., good quality, 60 to 70c.

Rice and Tapioca.—Rice, grade B., in 100-lb. bags, \$2.75 to \$2.80; C.C., \$2.65. Tapioca, medium pearl, 5½ to 6c.

Rolled Oats.—Oatmeal, \$2.20 per bag; rolled oats, \$2, bags.

Sugar.—Granulated, bags, \$5.05; yellow, \$4.65 to \$5. Barrels 5c. above bag prices.

Tea.—Japans, 20 to 38c.; Ceylons, 20 to 40c.; Ceylon, greens, 19 to 25c.; China, green, 20 to 50c.; low-grades, down to 15c.

Fish.—Salted.—Medium cod, \$7 per bbl.; herring, \$5.25 per bbl.; salmon, \$15.50 per bbl., for red, and \$14 for pink. Smoked fish.—Bloaters, \$1.10 per large box; haddies, 7¼c. per lb.; kippered herring, per box, \$1.20 to \$1.25.

Provisions.—Salt Pork.—\$27 to \$34 per bbl.; beef, \$18 per bbl.; smoked hams, 16 to 20c. per lb.; lard, 16½ to 17¼c. for pure, and 12½ to 14c. per lb. for compound.

* * * * * Toronto, July 28th, 1910.

Nearly every merchant conferred with speaks of the strike of trainmen on the Grand Trunk as interfering with his business. The inconvenience and loss being suffered are great, and it is noticeable that most merchants or manufacturers have small sympathy for the men in the dispute. Founders inland, in the south-west peninsula of Ontario suffer for lack of coal or pig-iron; stone and lime and brick dealers cannot get their goods into Toronto; dealers in roofing, steel, and iron goods, in fact, heavy goods generally, where they cannot command either C.P.R. or water connection, are badly handicapped. A large house whose business lies 75 per cent. in the part of the province served by the Grand Trunk, saying: "I cannot get a car in or out, and have had a wearisome week, besides losing money every day."

The pork-packing houses are severe sufferers; those at Stratford and Collingwood are shut down, those at Peterboro and Ingersoll nearly so, for lack of hogs. Toronto provision dealers say they have had to withdraw their travellers from districts served by the Grand Trunk, finding it impossible to take orders from Grand Trunk Railway points. We have seen letters by the dozen, saying: "Your goods shipped 15th, not reached us yet;" or, "How much longer must we wait for that car promised?" And it would seem that a crop of law suits must result from such an intolerable situation.

The following are wholesale prices for Toronto, where not otherwise explained, although for broken quantities higher prices are quoted:

Antimony.—Trade is quiet, price unchanged at \$8.50.
Axes.—Standard makes, double bitted, \$8 to \$10; single bitted, per dozen, \$7 to \$9.

Bar Iron.—\$2.05 to \$2.15, base, per 100 lbs., from stock to wholesale dealer. Free movement

Bar Mild Steel.—Per 100 lbs., \$2.15 to \$2.25. Sleigh shoe and other take same relative advance.

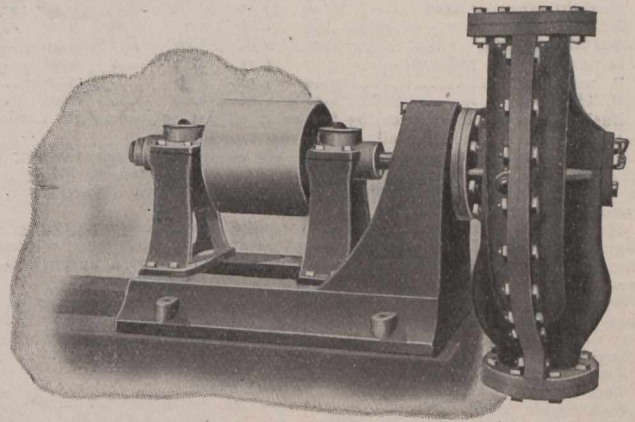
Boiler Plates.—¼-inch and heavier, \$2.20. Boiler heads 25c. per 100 pounds advance on plate. Tank plate, 3-16-inch, \$2.40 per 100 pounds.

Boiler Tubes.—Orders continue active. Lap-welded, steel, 1¼-inch, 10c. per 100 feet; 2-inch, \$8.50; 2¼-inch, \$10; 2½-inch, \$10.60; 3-inch, \$11 to \$11.50; 3½-inch, \$18 to \$18.50; 4-inch, \$19 to \$20 per 100 feet.

Building Paper.—Plain, 27c. per roll; tarred, 35c. per roll. Demand is moderate.

Bricks.—In active movement, with very firm tone. Price at some yards \$9 to \$9.50, at others, \$9.50 to \$10 for common. Don Valley pressed brick are in request. Red and buff pressed are worth \$18 delivered and \$17 at works per 1,000.

We manufacture all kinds of Power and Steam Pumps, Condensers, Travelling Cranes, etc.



The Smart-Turner Machine Co., Ltd.
HAMILTON - - - - CANADA

Broken Stone.—Lime stone, good hard, for roadways or concrete, f.o.b., Schaw station, C.P.R., 75c. until further notice, per ton of 2,000 lbs., 1-inch, 2-inch, or larger, price all the same. Rubble stone, 55c. per ton, Schaw station, and a good deal moving. Broken granite is selling at \$3 per ton for good Oshawa.

Cement.—Car lots, \$1.75 per barrel, without bags. In 1,000 barrel lots \$1.60. In smaller parcels \$1.90 is asked by city dealers. Bags, 40c. extra. Demand constant.

Coal.—The price of anthracite still remains at \$6.50 per ton, net, and pea coal at \$5.50 per ton. In the United States there is an open market for bituminous coal and a great number of qualities exist. We quote: Youghiogheny lump coal on cars here, \$3.75 to \$3.80; mine run, \$3.65 to \$3.70; slack, \$2.75 to \$2.85; lump coal from other districts, \$3.55 to \$3.70; mine run roc. less; slack, \$2.60 to \$2.70; cannel coal plentiful at \$7.50 per ton; cook, Solvey foundry, which is largely used here, quotes at from \$5.75 to \$6.00; Reynoldsville, \$4.90 to \$5.10; Connellsville, 72-hour coke, \$5.25.

Copper Ingot.—A very large volume of business is being done, but the market is weaker at \$15.25 to \$13.50. Production goes on at a rapid rate.
Detonator Caps.—75c. to \$1 per 100; case lots, 75c. per 100; broken quantities, \$1.

Dynamite. per pound 21 to 25c., as to quantity.

Felt Roofing.—A very good volume of trade is going on at \$1.80 per 100 lbs. as before.

Fire Bricks.—English and Scotch, \$30 to \$35; American, \$25 to \$35 per 1,000. Fire clay, \$8 to \$12 per ton.

Fuses.—Electric Blasting.—Double strength 4 feet, \$4.50; 6 feet, \$5; 8 feet, \$5.50; 10 feet, \$6. Single strength, 4 feet, \$3.50; 6 feet, \$4; 8 feet, \$4.50; 10 feet, \$5, per 100 count. Bennett's double tape fuse, \$6 per 1,000 feet.

Iron Chain.—¼-inch, \$5.75; 5-16-inch, \$5.15; ¾-inch, \$4.15; 7-16-inch, \$3.95; ½-inch, \$3.75; 9-16-inch, \$3.70; ¾-inch, \$3.55; ¾-inch, \$3.45; ¾-inch, \$3.40; 1-inch, \$3.40, per 100 lbs.

Iron Pipe.—A steady request at former prices:—Black, ¼-inch, \$2.03; ¾-inch, \$2.25; ½-inch, \$2.63; ¾-inch, \$3.28; 1-inch, \$4.70; 1¼-inch, \$6.41; 1½-inch, \$7.70; 2-inch, \$10.26; 2½-inch, \$16.30; 3-inch, \$21.52; 3½-inch, 27.08; 4-inch, \$30.78; 4½-inch, \$35.75; 5-inch, \$39.85; 6-inch, \$51.70. Galvanized, ¼-inch, \$2.86; ¾-inch, \$3.08; ½-inch, \$2.48; ¾-inch, \$4.43; 1-inch, \$6.35; 1¼-inch, \$8.66; 1½-inch, \$10.40; 2-inch, \$13.86, per 100 feet.

Pig Iron.—We quote Clarence at \$20.50, for No. 3; Cleveland, \$20.50; Summerlee, \$22; Hamilton quotes a little irregular, between \$19 and \$20. The market unchanged and quiet.

Lead.—A very fair demand exists, at an unchanged price of \$3.75 to \$3.85. A better feeling exists, however.

Lime.—Retail price in city 35c. per 100 lbs. f.o.b., car; in large lots at kilns outside city 25c. per 100 lbs. f.o.b. car without freight. Demand is moderate, supply might be larger; the strike hampers dealers.

Lumber.—An unusually brisk demand has characterized the month, and prices are fully maintained. Pine is good value at \$32 to \$40 per M. for dressing, according to width required; common stock boards, \$28 to \$33; cull stocks, \$20; cull sidings, \$17.50. Southern pine dimension timber from \$30 to \$45, according to size and grade; finished Southern pine, according to thickness and width, \$30 to \$40; hemlock is in demand and held quite firmly, we quote \$17.50 to \$18; spruce flooring in car lots, \$22 to \$24; shingles, British Columbia, are steady, we quote \$3.10; lath, No. 1, \$4.60; white pine, 28-inch, No. 2, \$3.75; for 32-inch, \$1.85 is asked.

Nails.—Wire, \$2.35 base cut, \$2.60; spikes, \$2.85 per keg of 100 lbs.
Pitch and Tar.—Pitch, unchanged at 70c. per 100 lbs. Coal tar, \$3.50 per barrel. Demand moderate.

Plaster of Paris.—Calcined, New Brunswick, hammer brand, car lots, \$1.95; retail, \$2.15 per barrel of 300 lbs.

Putty.—In bladders, strictly pure, per 100 lbs., \$2.25; in barrel lots, \$2.10. Plasterer's, \$2.15 per barrel of three bushels.

Ready Roofing.—An active demand; prices are as per catalogue

Roofing Slate.—Most of the slate used in Canada comes now from Pennsylvania or Maine, the Canadian supply being slender and mostly from the Rockland quarries of the Eastern Townships in Quebec. There is a