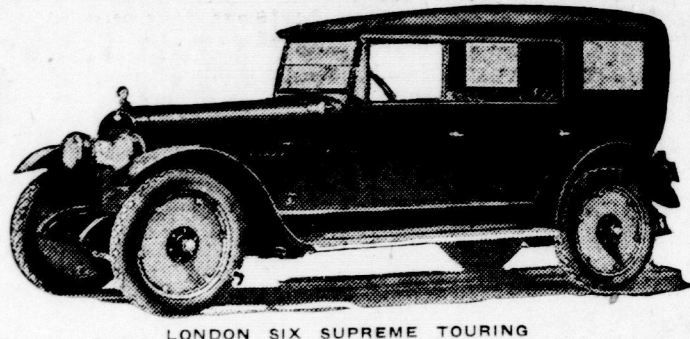


# Exhibits To See and Where To See Them at the Fair

## The Model That Is Making London Motors Famous!

This is Your Opportunity to See Four Models of Canada's Quality Car.

London Motors Limited



LONDON SIX SUPREME TOURING

# LOOK!

FOR THE FOUR MOST POPULAR AUTOMOBILES

in the Western Fair. Full particulars. Catalog. Will arrange for demonstration. Courteous salesman to take care of you.

**Marmon**  
**Oldsmobile - Hupmobile**  
**Oakland**

**W. R. SIMPSON** COR. KING AND TALBOT STS LONDON, ONT.

## VISIT OUR EXHIBIT AT FAIR AND SEE OUR DISPLAY

We are agents for James Stewart Manufacturing Company. In Stove Buildings we have a beautiful and complete line of Stoves and Furnaces. Best that can be made. See them and get prices before buying. It is a pleasure to show goods.

We are agents for **COLEMAN QUICK LIGHT**. This lamp and lantern is perfectly safe, guaranteed. Call and see them at store or at Stove Building, Exhibition.

We are agents for Frost Fence. This is a fence we are proud to be agents for. It speaks for itself. Call and see, and get prices. We have all kinds.

**STANDARD PAINT CO.**—We are agents for. We are showing **SOLVENT STAIN** at Stove Building, Exhibition. Call and see beautiful finish on wood. We carry full line of Paints.

**W. A. O'DELL Hardware**

389-393 TALBOT ST., OPP. MARKET.

PHONE 187.

## THE ATTRACTION of THE FAIR

Near the entrance of the Machinery Hall you'll find our three exhibits in which are displayed

**Sellers' Kitchen Cabinets**  
**Scarfe's Paints**  
**Dursley Rugs and Eureka Vacuum Cleaners**

If you have not seen these exhibits, you have missed the features of the Fair.

Factory experts are in charge of each booth, ready to give you advice on how to "Paint the Home"—"Clean the Home"—"Interior Decorations"—and making "Flying Fingers Take the Place of Flagging Feet."

HEAR THE RADIOPHONE

**THOMAS**

PHONE 5616.

240 DUNDAS STREET.

## Wednesday's Prize Lists At Fair

Continued From Page 6.

C. Shore, N. Park.  
Pen, ram, any age—N. Park, C. Shore.

Pen, Canadian-bred—C. Shore, N. Park.

Ram, any age—C. Shore, N. Park.  
Ewe, any age—N. Park.  
Champion ram—N. Park.

Champion ewe—N. Park.  
Lincoln sheep, judged by W. S. Dunnett, Hagersville:

Ram, two shears over—R. Robinson & Son, three prizes: C. Stobbs.

Ram, shearing—R. Robinson & Son, three prizes: D. Brodie.

Ram, lamb—R. Robinson & Son, D. Brodie, R. Robinson & Son, C. Stobbs.

Ewe, two shears—R. Robinson & Son, 1 and 2; C. Stobbs, R. Robinson & Son.

Ewe, shearing—R. Robinson & Son, 1 and 2; C. Stobbs, D. Brodie.

Ewe, lamb—R. Robinson, 1 and 2; C. Stobbs, R. Robinson.

Pen of five shearings—R. Robinson, D. Brodie.

Pen, ram, lamb and three ewe lambs—R. Robinson, C. Stobbs.

Pen ram, any age—R. Robinson, C. Stobbs.

Pen, Canadian-bred—R. Robinson, D. Brodie.

Ram, any age—R. Robinson, Ewe, any age—R. Robinson.

Champion ram—R. Robinson, Champion ewe—R. Robinson.

Leicester sheep, judged by W. S. Dunnett, Hagersville:

Ram, two shears over—J. Snell, A. Whitelaw, 2 and 3; J. Featherston.

Ram, shearing—J. Snell, A. Whitelaw, J. Featherston, A. Whitelaw.

Ram, lamb—J. Snell, A. Whitelaw, J. Featherston, J. Snell.

Ewe, two shears over—A. Whitelaw, J. Snell, J. Snell, A. Whitelaw.

Ewe, shearing—A. Whitelaw, A. Whitelaw, J. Snell, J. Snell.

Ewe, lamb—J. Snell, 1, 3 and 4; A. Whitelaw, 2.

Pen of shearings—A. Whitelaw, J. Snell.

Ram, lamb and three ewe lambs—J. Snell, A. Whitelaw.

Pen ram, any age—J. Snell, A. Whitelaw.

Pen, Canadian-bred—A. Whitelaw, J. Snell.

Ram, any age—J. Snell, Ewe, any age—A. Whitelaw.

Champion ram—J. Snell, Champion ewe—A. Whitelaw.

Shropshire sheep, judged by W. H. Beattie, Wilton Grove:

Ram, two shears over—J. Kelsey, 1 and 2; J. Larkin, 3 and 4.

Ram, shearing—J. Larkin, J. Kelsey, G. Betzner, J. Kelsey.

Ram, lamb—F. Gurney, J. Kelsey, J. Larkin, J. Kelsey.

Ewe, two shears over—G. Betzner, J. Larkin, J. Kelsey, and 4.

Ewe, shearing—F. Gurney, J. Larkin, 2 and 3; F. Gurney, J. Larkin.

Ewe, lamb—F. Gurney, P. Johnson, F. Gurney, P. Johnson.

Pen of five shearings—G. Betzner, J. Kelsey.

Pen, ram, lamb and three ewe lambs—P. Johnson, J. Kelsey.

Pen ram, any age—F. Gurney, J. Kelsey.

Pen, Canadian-bred—J. Larkin, G. Betzner.

Ram, any age—F. Gurney, Ewe, any age—F. Gurney.

Champion ram—F. Gurney, Champion ewe—F. Gurney.

Dorset Horned sheep, judged by W. H. Beattie, Wilton Grove:

Ram, two shears over—C. Stobbs, M. Stafford, W. Wright & Son.

Ram, shearing—W. Wright & Son, C. Stobbs.

Ram, lamb—C. Stobbs, M. Stafford, 2 and 3; W. Wright.

Ewe, two shears over—C. Stobbs, 1, 2 and 3; W. Wright & Son.

Ewe, lamb—C. Stobbs, 1 and 2; M. Stafford, 3 and 4.

Pen of five shearings—W. Wright & Son, C. Stobbs.

Pen, ram, lamb and three ewe lambs—C. Stobbs, M. Stafford.

Pen ram, any age—W. Wright & Son, Cecil Stobbs.

Pen, Canadian-bred—C. Stobbs, M. Stafford.

Ram, any age—C. Stobbs, Ewe, any age—C. Stobbs.

Champion ram—C. Stobbs, Champion ewe—C. Stobbs.

Suffolk or any other pure breed, judged by W. H. Beattie, Wilton Grove:

Aged ram—C. Stobbs, J. Bowman, two prizes.

Shearling ram—C. Stobbs.

Ram, lamb—Hastings Bros., C. Stobbs, Hastings Bros.

Aged ewe—J. Bowman, C. Stobbs, two prizes.

Shearling ewe—C. Stobbs, three prizes.

Ewe, lamb—Hastings Bros., C. Stobbs, Hastings Bros.

Pen ram, lamb and three ewe lambs—Hastings Bros., C. Stobbs, J. Bowman.

Pen ram, any age—C. Stobbs, J. Bowman, Hastings Bros.

Ram, Suffolk—Hastings Bros.

Ram, Cheviot—C. Stobbs.

Ewe, Suffolk—Hastings Bros.

Ewe, Ramsay—C. Stobbs.

Champion ram—C. Stobbs.

Champion ewe—C. Stobbs.

Hampshire sheep, judged by M. D. Kelley and Allan Grant, Shakespeare, Ont:

In this class all prizes went to Telfer Bros., as there was no competition. Under this class all exhibits were very good.

Oxford Down sheep, judged by M. D. Kelley:

Ram, two shears over—P. Arkell & Sons, R. Flemming, 2 and 3; Johnson Bros.

Ram, shearing—Johnson Bros, R. Flemming, P. Arkell.

Ram, lamb—Johnson Bros, P. Arkell, Johnson Bros.

Ewe, two shears over—R. Flemming, P. Arkell, 2 and 3.

Ewe, shearing—P. Arkell, R. Flemming, P. Arkell & Sons.

Ewe, lamb—P. Arkell, Johnson Bros, 2 and 3.

Pen of shearings—P. Arkell, Johnson Bros.

Pen ram, lamb and three ewe lambs—Johnson Bros, P. Arkell.

Pen ram, any age—P. Arkell, Johnson Bros.

Pen, Canadian-bred—R. Flemming, Johnson Bros.

Ram, any age—P. Arkell & Sons.

Ewe, any age—P. Arkell & Sons.

Champion ram—P. Arkell & Sons.

Champion ewe—P. Arkell & Sons.

Southdown sheep, judged by M. D. Kelley and A. Grant:

Ram, two shears over—R. McEwen, C. Stobbs, J. Larkin.

Ram, shearing—D. Larkin, R. McEwen, J. Larkin.

Ram, lamb—R. McEwen, J. Larkin, R. McEwen.

Ewe, two shears over—R. McEwen, 1 and 2; C. Stobbs, J. Larkin.

Ewe, shearing—R. McEwen, J. Larkin, R. McEwen, J. Larkin.

Ewe, lamb—J. Larkin, R. McEwen, 2 and 3; J. Larkin.

Pen of five shearings—J. Larkin, R. McEwen.

Pen ram and lamb—R. McEwen, J. Larkin.

Pen ram, any age—R. McEwen, J. Larkin.

Pen, Canadian-bred—J. Larkin, J. Larkin.

Ram, any age—R. McEwen.

Ewe, any age—R. McEwen.

Champion ram—R. McEwen.

Champion ewe—R. McEwen.

**FINE ARTS.**

Judged by C. H. Burroughs, Detroit:

Professional oils—E. Glenn, Bradshaw, J. P. Hunt, H. Corbett.

Water colors—J. P. Hunt, Miss M. Healey, C. O'Keefe, M. Burnett.

Amateur figure subject—K. Jeffrey, S. R. Cole, Mrs. C. Davis.

Oils, animals—M. O'Keefe, Mrs. C. Davis, Miss F. Bailey.

Oils, marine—S. Cole, Mrs. G. Martin, Miss O'Keefe.

Oils, landscape—S. Cole, Mrs. C. Davis, Miss F. Bailey.

Oils, flowers or fruit—F. Phelps, Mrs. C. Davis, K. Jeffrey.

Oils, still life—F. Phelps, Miss F. Bailey, Mrs. E. Alchards.

Water colors, animals—Miss F. Bailey, Mrs. E. Richards, M. O'Keefe.

Water colors, marine—G. R. Healey, M. O'Keefe, Miss F. Bailey.

Water colors, landscape—H. Pratt, M. O'Keefe, K. Jeffrey.

Water colors, flowers or fruit—M. O'Keefe, M. Gibbons, Miss F. Bailey.

Water colors, still life—Miss F. Bailey, Mrs. E. Richards.

Life study, oil or water colors—Mrs. E. Richards, M. O'Keefe, M. Gibbons.

Pen and ink—G. Healey, M. O'Keefe, Mrs. E. Richards.

Drawing from casts—M. O'Keefe, Miss F. Bailey, M. Gibbons.

Pencil—H. Pratt, G. Healey, M. Gibbons.

Sepia—G. Healey, Miss F. Bailey, Thomas Bodfish, jun.

Charcoal—M. O'Keefe.

Monochrome 1 nolis—Miss F. Bailey, M. O'Keefe.

Indian ink—J. Jamieson.

Pastels—Mrs. E. Richards, Miss F. Bailey, M. Gibbons.

Carving on wood—H. Moody, F. G. Sperring, W. Adams.

Modeling in clay—Miss E. Wolverton.

Decorated China realistic—M. Burnett, Mrs. J. Cummings, L. Phillips.

Conventional—M. Burnett, Mrs. J. Cummings, Mrs. M. Cone.

Amateur—Mrs. V. Kennedy, Mrs. J. Wheaton, Mrs. M. MacDonald.

**CHEESE.**

The cheese awards are as follows:

Factory colored cheese, June—1 H. E. Donnelly, Stratfordville; 2 W. T. Oliver, Atwood; 3 B. F. Howes, West Monkton; 4 G. Bain, Lakeside; 5 Jas. Henderson, West Monkton.

Factory white—1 W. T. Oliver, Atwood; 2 Wesley Krotz, Palmerston; 3 Martin Calder, St. Marys; 4 H. E. Donnelly.

Factory colored, July—1 A. Such, Springfield; 2 G. Bain; 3 B. F. Howes, West Monkton; 4 W. T. Oliver.

Factory white (15 entries)—1 Wesley Krotz; 2 L. E. Schenk, Brunner; 3 Mar-

tin Calder, St. Marys; 4 W. T. Oliver. Factory colored, August (20 entries)—1 W. T. Oliver, 2 B. F. Howes, 3 H. E. Donnelly, 4 H. J. Neele, Tavistock.

Factory white (17 entries)—1 L. H. Schneider, Listowel; 2 Joseph Skelton, Kintore; 3 Wesley Krotz; 4 Lloyd Thompson, Embro.

Two Canadian, flat (15 entries)—1 H. E. Donnelly, 2 W. T. Oliver, 3 Wesley Krotz, 4 H. J. Neele.

Three Canadian, stilton—1 W. T. Oliver, 2 B. F. Howes, 3 G. Bain.

Instructors' section—1 R. A. Thompson; 2 G. A. McKenzie, Ingersoll; 3 R. H. Green, Simcoe.

Bank of Montreal special, for cheese securing highest score, factory located within 15 miles of London—1 E. L. Abbot, Dorchester; 2 and 3 Wm. Jamieson, Lambeth; 4 G. M. Shillington, Dorchester.

Judges—James Bristow, William Gray, James Biffen.

## The Macartney Milker Mechanical Perfection!

On exhibition and daily being demonstrated to thousands of progressive farmers. Don't miss it. Front of Cattle Building, Western Fair.

Time was when clover was considered the ideal hay crop for dairy feeding. Then a new discovery was made. Alfalfa we now know to be better.

And so with milking machines. There have been, and are today, many which will milk with certain success. But the Macartney is a distinct advancement.

What Thomas A. Edison has done for electricity, we believe we have done for mechanical milking. We have brought together, and combined, after study and improvement, all the most highly approved known principles—and to this substantial foundation, added developments which are vital in their basic importance.

The Macartney Milking Machine Co.

## FAIR WEEK ONLY

Regular \$10

# All Felt Mattress

On Sale for \$5.95

See Exhibit in Machinery Hall.

# KEENE BROS.

127 KING STREET.

## The STAR Car

We thank you for the wonderful reception given to our first showing of the STAR. No statement of ours could equal the unqualified praise of those who have seen this car.

## The Durant Car

—just a real good car.

Built to withstand more than the usual abuse—to operate with more than the usual economy—be maintained with more than the usual ease—these are the features of the DURANT.

## SEE OUR EXHIBIT AT WESTERN FAIR

Right at the entrance to the Main Building.

# S. H. GALLAGHER

STAR AND DURANT, DEALER

189 King Street

Phone 2339

# This Car Does Everything!

Here is a car filled to the brim with pep, pulling power, personality! A car that is a rare combination of fine appearance, pertinent performance and most unusual economy of maintenance.

Rides—hills or valley, rough road or smooth—like a cloud on a summer breeze! A car that gives the driver, riders comfort. No effort! Real enjoyment. Let us present our crack salesman—the new Mitchell F-50.

The New Mitchell

F-50

"A Flow of Power"

# W. C. MORRISON

174-176 Fullarton Street.

Distributor.

Phone 1871-J.

What the New F-50 Mitchell Does

Throttles to 1 mile per hour in high and accelerates suddenly to wide open throttle, **without bucking or jerking!**

Accelerates in high gear from 5 to 30 m.p.h. in 10 seconds, 1 to 40 m.p.h. in 20 seconds. Will turn a complete circle in a 22 ft. radius.

The F-50 Motor develops **real pulling power** at speeds as low as 67 r.p.m. The average engine begins to pull only **above 300 r.p.m.**

## E. R. Seabrook & Co.

Build With Cooksville Brick

The Standard of Ontario.

Guaranteed permanency of color. See us at the Fair. 12 different panels to select from.

See our Metal Garages—a price, style and size to meet every pocket. Erected complete or shipped in parts.

Location just west of Dog Show on opposite side.

Office 119 King St. Phone 1700-J. Res. 4976-W.

## DON'T MISS THIS!