

Successful Industrial Craft.

HANDWORK OF GREENFELL PUPILS.

The success of the industrial work in conjunction with Dr. Grenfell's enterprises on Labrador and Newfoundland is illustrated by a splendid display of handwork which is now open for inspection at the Institute buildings, Water Street, St. John's.



A TRIAL Will Satisfy You Windsor Table Salt Purest and Best

The gift of the Pittsburg 20th Century Club. Amongst the prominent American visitors this year to Dr. Grenfell's institutions is Mr. Henry Ford, who with his family is cruising on Labrador in his private yacht.

Ice Cream Cones, Fruit and Confectionery at COLLETT'S, 106 Duckworth Street, few doors East Cochrane Street.

Two Schooners Lost On Labrador.

S.S. HOME REPORTS HERRING PLENTIFUL

There is a good sign of herring on Labrador side of Straits, from Henley Harbor to Battle Harbor, is the report brought here by Capt. Norman, of the s.s. Home, which ship reached port just at dark Monday evening.

The herring are of a large size and 1 man had about four barrels. In his cotrap on Friday, Fishermen are getting three to four quintals a day daily by trawl and handline along the coast from Blanc Sablon to Lewis Bay.

The Home sailed along the coast he will have about 35,000 quintals to send to market. During a gale on Tuesday of last week two schooners were driven from their anchorage in vicinity of Chimney Tickle upon the rocks at Cape Charles and became total wrecks.

Personal.

Mr. W. E. Hardy, of Harbor Grace, was a successful candidate for a first class certificate in radio telegraphy, at Ottawa, recently.

Mr. J. B. Orr left by yesterday's steamer for Montreal and New York and other American and Canadian cities. Mr. Orr has booked tickets for the Brennan-Dempsey boat, which leaves place next month.

Mr. E. F. Best, of Simcoo, Ont., representing "Saturday Night," Toronto, "the paper worth while," is in town, being a guest at Balsam Place. Mr. Best will be staying for several weeks, enjoying the suburban and urban beauties for which St. John's is noted.

Rev. E. C. Earp, B.A., Rector of St. Thomas's, is leaving by s.s. Mentor for Canada on a visit which will last three weeks. During his stay there, he will, it is said, arrange for two Curates for his Parish to succeed Revs. Clayton and Moulton.

At MRS. STEWART'S Home Made Bread—appt.6mo

A Sale Measuring Right Up to Your Idea of a REALLY GOOD SALE

August Clean-Up

A Sale Productive of Much Goodness to Shoppers Here

Our policy of a thorough Stock-Cleaning asserts itself once more. Odds and Ends of Summer Merchandise go at appreciable reductions.

Everything that will hasten their selling has been generously done. The price drop is the GREATEST OF THE SEASON. COME!

Extra Special Values in KITCHEN UTENSILS



- Grey Enamel Skillets (handy sizes) 79c. Grey Enamel Cullenders, medium 49c. Grey Enamel Rice Boilers, each \$1.49. Grey Enamel Saucepans, each 48c. Grey Enamel Buckets, each 78c. Blue and White Enamel Dippers, each 44c. Tin Buckets; useful size, each 35c. Galvanized Buckets; extra strong—each 39c. and 49c. Cake Pans, tin with crimped edge 10c. Pot Covers, very handy, each 18c. New Idea Cake Pans, never stuck, ea. 19c. Broilers, novel, neat and clean, ea. 25c. Aluminum Saucepans 79c. & 94c. Grey Enamel Kettles, medium size 89c. Grey Enamel Pot Baths, oval 1.14.9 Suet Iron Frying Pans 85c. Grey Enamel Dish Pans 65c.

19c well spent on Needables in KITCHENWARE

- Blue Enamel Sink Strainers 19c. Grey Enamel Saucepans, quick 19c. Kitchen Wall Brackets, handy 19c. Manifold Graters; you need one 19c. Dust Pans; full size, Japanese 19c. Tube Cake Pans, round; each 19c. Patty Pans, put up in sizes 19c. Milk Strainers, clean and quick 19c. Grey Enamel Pans, useful size 19c. Cake Pans or Baking Pan, black 19c.

LADIES' \$16.00 Wool Sweaters for \$4.95



Note the value and the saving here, shades of Mist, American Beauty, Jade, Buff, Emerald, strawberry and Black; roll collar, long sleeves and ripple skirt. Reg. \$6.00. Friday, Saturday and Monday \$4.95

A WARNING SEASON is responsible for these very LOW PRICES ON High-Grade HOSE



- SILK HOSE—10 dozen pairs in this lot; shades of Grey, Navy, Champagne, Light Tan, Cordovan, Coating White and Black. Extraordinary value, at 39c. SILK HOSE—Heavy Silk quality; just 12 dozen pairs left; pretty shades of Champagne, Grey, Black and White. Another thriller for value, the pair 65c. LISLE HOSIERY—Ladies' plain, seamless finish English Lisle Hosiery; pretty shade range: Putty, Mole, Coating, Navy, Grey, Cordovan and Black. You'll like this line. Friday, Saturday and Monday 65c. MORE SILK HOSE—High grade Silk Hosiery down to a level price; shades of Nickel, Grey, Cordovan, Dark Grey and Fawn. Splendid value at \$1.20. To close at 98c. CHILDREN'S HOSIERY—Strong heavy ribbed early fall Hosiery for girls or boys; assorted sizes. Reg. 80c. pair. To clear 49c. GIRLS' WHITE HOSIERY—Fine close ribbed White Cotton Hose, in sizes from 7 1/2 to 9 inch; only 4 dozen pairs. To clear at 25c. STAIR DRUGGET—17 inch Stair Drugget, carpet patterns, bordered; look well under oil cloth tread. Special Friday, Saturday and Monday, yard 33c. SIDEBORD CLOTHS—Beautiful beyond comparison; strong white linen make, generously embroidered, all scalloped and worked edge; best value we have ever seen in these. Special 75c.

August Clean-Up IN THE SHOWROOM-NOW

- GIRLS' CREPE DRESSES—New Fancy Crepe Dresses to fit from 2 to 6 years, in pretty coloured checks, showing white roll collar; others in coloured cotton. Reg. 80c. Friday, Saturday and Monday 79c. "BOBBY" COMBS—The only comb suitable for bobbed hair; try one you will find these will not fall out of place; pretty shell make. Special Friday, Saturday and Monday 34c. UNDERPANTS—Ladies' fine White Jersey Underpanta, knee length, open; others wide legs, lace trimmed. Reg. 90c. Friday, Saturday and Monday 59c. NIGHTGOWNS—Ladies' White Lawn Nightgowns. V and round neck, with or without collar, embroidery and insertion trimmings, and long sleeves. Reg. \$2.50 value. Friday, Saturday and Monday \$1.39. GUEST TOWELS—Stamped Guest Towels of real good quality White Huck, different designs to select from. Special Friday, Saturday and Monday 23c. GIRLS' TWEED COATS—Snug looking Coats for your little girl; they fit 6 to 10 years; nice mixed Tweed patterns, showing belt and pockets. Reg. \$6.50. Friday, Saturday and Monday \$3.98. Crepe-de-Chene Jumpers A very handsome range of these now showing, in shades of Malze, Peach, Rose, Jade, Champagne, Grey, Cream and White. 3/4 sleeve, silk embroidered and abed, fringed; others with heading at waist. Regular values to \$3.00. Friday, Saturday and Monday \$4.39. INFANTS' DRESSING GOWNS—In Cream and White, with Pink and White hood, double and pockets and pocket roll cuff. Reg. values to \$3.00. Friday, Saturday and Monday \$1.45. Ladies' Dresses In Serge, Tricotine, Gabardine, Jersey, etc., braided and embroidered; straight line effect with waist girdle, three quarter sleeve and round neck. Everyone in the lot picked from the manufacturer's sample line; they are certainly value; up to \$25.00 each. Friday, Saturday and Monday \$11.95.

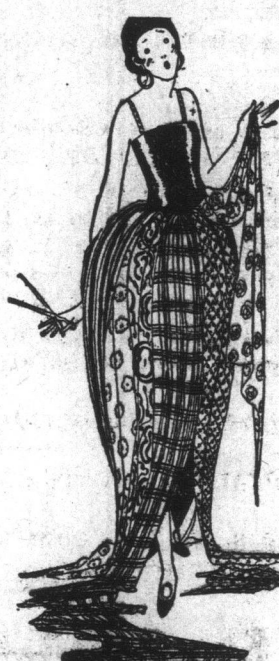
Handsome Looking TERRY CLOTH CHINTZ

Reversible Chintz in the prettiest patterns we have ever shown; 36 inches wide; pretty colorings, prettily blended; handsome Fall and Winter Curtainings and Drapes. Regular \$1.80 value. Friday, Saturday and Monday \$1.39

CHINTZ HUNTERS—Most serviceable Cloths for many uses; your choice of very handsome formal patterns; each lace edged. Regular 75c. Friday, Saturday and Monday 39c. CUSHION COVERS—These are made of Dark Linen Crash with a frilled border; value for 80c. Friday, Saturday and Monday 52c.



SERVICE GINGHAMS, VOILES Zephyrs, Creps and Poptins, etc., away under their Regular Prices



- FIGURED VOILES—This line brings you very handsome, fancy figured Cotton Voiles in Light and Dark Colour blendings, suitable for young or old. Reg. 50c. yard. Friday, Saturday and Monday 35c. WASH GINGHAMS—Plain and Fancy Striped Wash Gingham, good wearing quality; a nice assortment to select from. Reg. 22c. yard. Friday, Saturday and Monday 16c. ZEPHYRS—These are unusually strong and serviceable, real good looking, medium and fine pin stripe patterns, as well as plain shades, Pink, Pale Blue and Fawn. Reg. to 30c. Friday, Saturday and Monday 23c. SPOT MUSLINS—Ever new and fresh looking White, shower and Hall Muslins in small and larger spot effects; always useful and dressy. eteinae always useful and dressy. Special Friday, Saturday and Monday 36c.

Beautiful Shade Range of SILK MUSLINS—New 48c

Superior Mercerized finish, 40 inches wide and the shades are rich looking and well assorted: Pink, Champagne, Pale Blue, Navy, Sage, Peach and Apricot. Special the yard Friday, Saturday and Monday 48c

SAVINGS FROM EVERY SECTION AWAIT YOU

- GUEST TOWELS—Pure White Huck Guest Towels, plain with hemmed edge. Friday, Saturday and Monday, each 39c. TURKISH TOWELS—Extra large size unbleached Turkish Towels; Crimson and Fawn striped; \$1.00 value. Friday, Saturday and Monday, each 84c. LACE CURTAINS—Two and four yard size White Lace Curtains; new patterns just to hand. Reg. \$3.00. Friday, Saturday and Monday \$2.79. WINDOW SHADES—36 inches wide, in Buff shade only; plain end Blinds on dependable rollers. 49c. Special each 49c. CURTAIN RODS—54 inch Tubular Brass Extension Curtain Rods, with fluted ball ends; complete. Friday, Saturday and Monday 23c. CURVED CURTAIN RODS—These are neat looking, brush brass finish; flat fluted shape with curved ends to permit of curtain standing clear of sash. Reg. 65c. Friday, Saturday and Monday 49c. PLAIN SCRIMS—In White and Paris shade, up to 43 inches wide, strong even threads; suitable for window portier or folding door curtains. Special the yard Friday, Saturday 28c. COATINGS—New arrivals in Fawn and Beaver shades; beautiful soft goods; 54 inch width; just a piece of each. Reg. \$6.00. Friday, Saturday and Monday \$5.69. AMERICAN QUILTS—18 only light weight Marcella patterned American White Quilts; plain hemmed ends, easy to wash; they are value for \$2.50. Friday, Saturday and Monday \$1.69. MOTOR RUGS—Reversible Fringe Plaid Wool Rugs, for motor or carriage; brand new and offering remarkable value at our Special Price. Friday, Saturday and Monday \$5.35. PILLOW COTTONS—42 inch English Circular Pillow Cottons; nice strong cloth. Reg. 65c. yard. Friday, Saturday and Monday 59c.

You have never bought such Pillow Case Values

- PILLOW CASES—Hamatched Pillow Cases, plain finish, full size. Special Friday, Saturday and Monday 53c. each. FRILLED PILLOW CASES—3 dozen of these plain Cotton Pillow Cases, with all frilled border. Special 53c. Friday, Saturday and Monday. PLAIN PILLOW CASES—In soft unpressed linen, sensible pillow cases for family use. Special Friday, Saturday and Monday 69c. MUSLIN CURTAIN COVERS—Strong White Muslin Curtain Covers, frilled border and silky embroidered Top. Reg. \$1.00 value Friday, Saturday and Monday 89c.

Less Than Half Price BUNGALOW TABLE CLOTHS

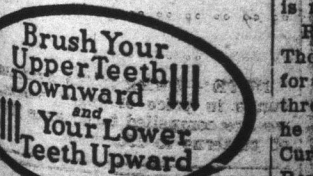
Coloured Damask Table Cloths and Table Covers, sizes 58 x 72, showing Blue and White and Crimson and White Check and Stripes; others Crimson and Shaded as a Table Cover. Reg. \$3.75. Friday, Saturday and Monday \$1.69



A Clean Tooth Never Decays



Always Sold in a Yellow Box. THE WORLD'S LARGEST TOOTH PASTE MANUFACTURER. PREPARED BY THE WATSON TOOTH PASTE MANUFACTURING CO. ST. JOHN'S, N.F.



Distributed in Nfld. by GERALD S. DOYLE St. John's.

ANZORA, well-known English preparation, keeps a man's hair soft and shiny. Merely the hair... 80c. bottle. O'MARA, Dressmaker should be consulted... PLEASEING STYLE... AND SIMPLE HOUSEWORK DRESS.