

- Class 17—Cooking**
1. Best Apple Pie. 3 prizes—30c, 20c, 10c.
 2. Best Layer Cake. 3 prizes—30c, 20c, 10c.
 3. Best 6 Cookies (white). 3 prizes—30c, 20c, 10c.
 4. Best Candy (home-made). 3 prizes—30c, 20c, 10c.

- Class 18—Needlework (Grades 3 and 4)**
1. Best piece of hand embroidery. 3 prizes—35c, 25c, 10c.
 2. Best hemstitched handkerchief (unwashed). 3 prizes—35c, 25c, 10c.
 3. Best crocheted edging. 3 prizes—35c, 25c, 10c.

- Class 19—Miscellaneous (Grades 1 and 2)**
1. Best quilt block. 3 prizes—35c, 25c, 10c.
 2. Best crocheted edging. 3 prizes—35c, 25c, 10c.

- Class 20—Miscellaneous**
1. Best Jack in Water (Grades 1 and 2). 3 prizes—35c, 25c, 10c.
 2. Best home-garden (Grades 1 and 2). 3 prizes—35c, 25c, 10c.

- Class 21—Miscellaneous**
1. Best "Maple Leaf" (Grades 1 and 2). 3 prizes—35c, 25c, 10c.
 2. Best "God Save the King" (Grades 1 and 2). 3 prizes—35c, 25c, 10c.

- Class 22—Miscellaneous**
1. Best "Hens and Chickens" (Grades 1 and 2). 3 prizes—35c, 25c, 10c.
 2. Best "The Girl" (Grades 1 and 2). 3 prizes—35c, 25c, 10c.

- Class 23—Miscellaneous**
1. Best "The Boy" (Grades 1 and 2). 3 prizes—35c, 25c, 10c.
 2. Best "The Girl" (Grades 1 and 2). 3 prizes—35c, 25c, 10c.

- Class 24—Miscellaneous**
1. Best "The Boy" (Grades 1 and 2). 3 prizes—35c, 25c, 10c.
 2. Best "The Girl" (Grades 1 and 2). 3 prizes—35c, 25c, 10c.

- Class 25—Miscellaneous**
1. Best "The Boy" (Grades 1 and 2). 3 prizes—35c, 25c, 10c.
 2. Best "The Girl" (Grades 1 and 2). 3 prizes—35c, 25c, 10c.

- Class 26—Miscellaneous**
1. Best "The Boy" (Grades 1 and 2). 3 prizes—35c, 25c, 10c.
 2. Best "The Girl" (Grades 1 and 2). 3 prizes—35c, 25c, 10c.

- Class 27—Miscellaneous**
1. Best "The Boy" (Grades 1 and 2). 3 prizes—35c, 25c, 10c.
 2. Best "The Girl" (Grades 1 and 2). 3 prizes—35c, 25c, 10c.

- Class 28—Miscellaneous**
1. Best "The Boy" (Grades 1 and 2). 3 prizes—35c, 25c, 10c.
 2. Best "The Girl" (Grades 1 and 2). 3 prizes—35c, 25c, 10c.

- Class 29—Miscellaneous**
1. Best "The Boy" (Grades 1 and 2). 3 prizes—35c, 25c, 10c.
 2. Best "The Girl" (Grades 1 and 2). 3 prizes—35c, 25c, 10c.

- Class 30—Miscellaneous**
1. Best "The Boy" (Grades 1 and 2). 3 prizes—35c, 25c, 10c.
 2. Best "The Girl" (Grades 1 and 2). 3 prizes—35c, 25c, 10c.

- Class 31—Miscellaneous**
1. Best "The Boy" (Grades 1 and 2). 3 prizes—35c, 25c, 10c.
 2. Best "The Girl" (Grades 1 and 2). 3 prizes—35c, 25c, 10c.

- Class 32—Miscellaneous**
1. Best "The Boy" (Grades 1 and 2). 3 prizes—35c, 25c, 10c.
 2. Best "The Girl" (Grades 1 and 2). 3 prizes—35c, 25c, 10c.

- Class 33—Miscellaneous**
1. Best "The Boy" (Grades 1 and 2). 3 prizes—35c, 25c, 10c.
 2. Best "The Girl" (Grades 1 and 2). 3 prizes—35c, 25c, 10c.

- Class 34—Miscellaneous**
1. Best "The Boy" (Grades 1 and 2). 3 prizes—35c, 25c, 10c.
 2. Best "The Girl" (Grades 1 and 2). 3 prizes—35c, 25c, 10c.

- Class 35—Miscellaneous**
1. Best "The Boy" (Grades 1 and 2). 3 prizes—35c, 25c, 10c.
 2. Best "The Girl" (Grades 1 and 2). 3 prizes—35c, 25c, 10c.

- Class 36—Miscellaneous**
1. Best "The Boy" (Grades 1 and 2). 3 prizes—35c, 25c, 10c.
 2. Best "The Girl" (Grades 1 and 2). 3 prizes—35c, 25c, 10c.

- Class 37—Miscellaneous**
1. Best "The Boy" (Grades 1 and 2). 3 prizes—35c, 25c, 10c.
 2. Best "The Girl" (Grades 1 and 2). 3 prizes—35c, 25c, 10c.

- Class 38—Miscellaneous**
1. Best "The Boy" (Grades 1 and 2). 3 prizes—35c, 25c, 10c.
 2. Best "The Girl" (Grades 1 and 2). 3 prizes—35c, 25c, 10c.

1. All exhibits must be the property or the work of the exhibitor.
2. No entry fee is charged for any exhibit.
3. No pupil can make more than one entry in any one section.
4. Wire Coops will be supplied at the Fair in which to exhibit the poultry.
5. Live stock exhibits must be from the pupils home farm and must be halter broken, and led by the pupil exhibiting.

6. All exhibits of potatoes, grain and corn, mangles, turnips, etc., must be from the seed supplied by the Department.
7. Each pupil will fill out his or her tickets, being careful to get the correct Class and Section according to the Prize List. These tickets should be securely fastened to the exhibit. Be particularly careful that you have your entry number on each ticket, as well as your name.

8. Classes 17, 18, 19, parents are required to sign a declaration and attach it to the exhibit, stating that the work was performed by the pupil exhibiting.
9. All school boards have been asked to contribute to the School Fair fund, and cash prizes can only be awarded to schools making cash donations.

10. Ribbons will be distributed with prize money.
11. Bring this Prize List with you.
12. All protests must be made to the Agricultural Representative, and his decision shall be final.

- NOTE**—Any person found guilty, either on the day of the fair or after, of wilfully breaking any one of the above rules will, together with other members of the family, be debarred from taking part in a School Fair for the following two years.

- BUY YOUR COAL NOW.**
- A survey of the coal situation by the Commission of Conservation proves that a coal shortage next winter, and possibly next autumn, is almost a certainty.

- During the year ended May 24, the output of anthracite was only 1,679,000 tons. This production is 65,000 tons less than the week preceding, and is 326,000 tons less than the corresponding week in 1918. While the production is falling off, retail dealers in the United States continue to be deluged with orders from customers who are insistent upon prompt deliveries.

- Up to June 7th of the present year, the total production of anthracite was only 33,349,500 net tons as compared with 42,858,000 tons in the corresponding period of 1918, a decline of 9 1/2 million tons, or 22 per cent. It is a fair assumption that the production during 1919 will be less than 80,000,000 tons, whereas the production in 1918 was 99,614,324 tons. If this prediction is verified, there will be a shortage of 20,000,000 tons, or 20 per cent.

- The shortage is due to a number of causes, not the least of which is the migration of tens of thousands of Jugo-Slavs, Czech-Slavs, Hungarians, Poles and other Europeans who are returning to Europe.

- In addition, if there is such a serious shortage, we may confidently expect much higher prices for anthracite. Therefore, the Commission of Conservation advises consumers to purchase their winter supply of hard coal at the earliest possible date.

- PROGRAM OF SPORTS**
1. 25 Yards Dash, boys 8 years and under, ribbons.
 2. 25 Yards Dash, girls 8 years and under, ribbons.
 3. 50 Yards Dash, boys 8 to 12 years, ribbons.
 4. 50 Yards Dash, girls 8 to 12 years, ribbons.
 5. 75 Yards Dash, boys 12 years and under, 16, ribbons.
 6. 75 Yards Dash, girls 12 years and under, 16, ribbons.
 7. Boys three-legged race, ribbons.
 8. Sack Race for girls (supply own bags), ribbons.
 9. Sack Race for boys (supply own bags), ribbons.
 10. Girls' Needle Race, ribbons.
 11. Horse-back Riding Contest, ribbons.
 12. School Parade; the prizes to be awarded on the following basis: 1, deportment; 2, originality in design for displaying the identity of each school section; 3, arrangement of pupils. 1st prize \$2.00, 2nd prize \$1.50, 3rd prize \$1.00.

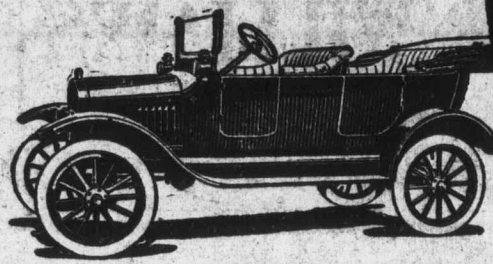
- NOTE**—This year, points will be given for winners in the sports contest, to be counted towards the shield. Two entries will be allowed from each school in each class with the exception of the relay race, which will be run by one team from each school. Teachers are advised to have a trial contest previous to the day of the Fair, and select the pupils who will enter the various contests. They then make their entry in each race in similar manner to the regular classes in the Fair. Each contestant will have an entry card, entry number on it, and name of school, and class entry.

- NOTE**—Programme outside the tent will be run off as follows: Live stock judging will commence at 12.30. Next will be the School Fair parade, and following this the program of sports as listed on the Prize List. All pupils taking part in the School Parade must be ready to line up at 1.30 sharp. The Parade will not be kept waiting for Schools not arrived at that time. Races will not be kept waiting for pupils who are not there at the time their class is called.

- The School Fair board wishes to thank the School Boards and others who so generously contributed to the Prize List.

- Come to the Fair; bring your lunch baskets and enjoy a day with the boys and girls.

- RULES AND REGULATIONS.**
- Please read carefully and follow out regulations in detail.



THE new Ford ELECTRIC System is as great an achievement as the Ford Motor.

NO BETTER Starting & Lighting System

is supplied on any car--at any price.

See it for yourself. The work, is a complete system, starting motor, battery-battery-battery into the system, producing the Ford Power.

The Ford Car is also equipped with the standard Magneto to provide ignition independent of the battery.

The whole system is controlled from an instrument board on the cowling.

We have the NEW CAR too. Equipped with the New Starting and Light System. Would advise customers to place their orders early as cars will be scarce.

We have one Touring Car, also one Roadster for sale at a SNAP.

W. B. & AGENTS Plum Hollow Ontario

Are You Equipped To Win Success?

Here is your opportunity to insure against embarrassing errors in spelling, pronunciation and poor choice of words. Know the meaning of puzzling words. Increase your efficiency, which results in power and success.

WEBSTER'S NEW INTERNATIONAL

DICTIONARY is an all-knowing teacher, a universal question answerer, made to meet your needs. It is in daily use by hundreds of thousands of successful men and women the world over. 600,000 Words, 2700 Pages, 6000 Illustrations, 12,000 Biographical Entries, 30,000 Geographical Subjects.

GRAND PRIZE (Highest Award) Panama-Pacific Exposition.

REGULAR and IRON-PAPEL Editions. WRITE for Specimen Page, FREE Pocket Map if you name this paper.

G. & C. MERRIAM CO. Springfield, Mass., U. S. A.

Building Lumber,	Clapboards,	Flooring
Doors and Sash	Shingles	Lath
Beaver Board	Bee Hives	Portland Cement
Prepared Lime	Asbestos Plaster	Whey Tanks
Cisterns	Slab Wood	Flour and Feed
Hog Feed	Cow Feed	Hen Feed
Bran and Shorts	Middlings, Feed Flour	Gluten Feed
Barley Meal	Corn Meal	Oil Cake Meal
5 Roses Flour	Rolled Oats	Salt—fine and coarse
Agri-Lime—Fertilizer		

Highest Quality and Lowest Prices

Athens Lumber Yard and Grain Warehouse

Reporter Adv'ts Pay--Try One N

...y Newcastle Dale, the well known Canadian naturalist, is the author of the leading article in ROD AND GUN IN CANADA for August, it is entitled "Salmon Fishing at Campbell River." The wondrous beauty of the Campbell River Falls is to be seen in the page photo-engraving that accompanies the article. Other articles and stories of note are: "Tahar The Turtle," by A. O. Philipp; "Rideau and Trent Canals," by L. Sherwood; "The Dufferin and Newboro' Lakes," by W. M. Taylor; "The Summer in the Northland," by Walter ... an illustrated account of the ... of the N. S. ... appears in this splendid ... with the usual high grade ... Guns and Ammunition, Fishing, Kennel and Conservation Department. Canada's premier outing monthly is published by W. M. Taylor, Limited, at Woodstock, Ont.

The call of the West, the call of the harvest, has again sounded, and the plea for help from the Western farmer for the harvesting of this year's crop rings insistently in the ears of the East. While earlier reports were to the effect that crops were no so bountiful, the later news that was received following the anxiously awaited rains has led to the prediction that this year's crop will be much more than an average yield, and the demand for farm laborers for the 1919 harvest is most urgent. Despite the unusually heavy traffic in passenger and freight services the Canadian Pacific Railway, considering the harvesting of the crops as a matter of national welfare, again places at the disposal of farm laborer excellent through train service to Winnipeg, and on arrival there every assistance is given prospective harvesters in securing the positions in the harvest fields. Excursion dates are August 12th and 19th. For further particulars apply to A. J. Potvin, City Ticket Agent, Canadian Pacific Railway, Brockville, Ont., 52 King St. West, corner Court House Ave.

P
A
R
T
O
F
T
H
I
S
P
A
G
E
M
I
S
S
I
O
N
G