

**THE
INDEPENDENT ORDER OF FORESTERS
FURNISHES A COMPLETE SYSTEM OF INSURANCE**

Policies issued by the Society are for the protection of your family, and cannot be bought, sold, or pledged.

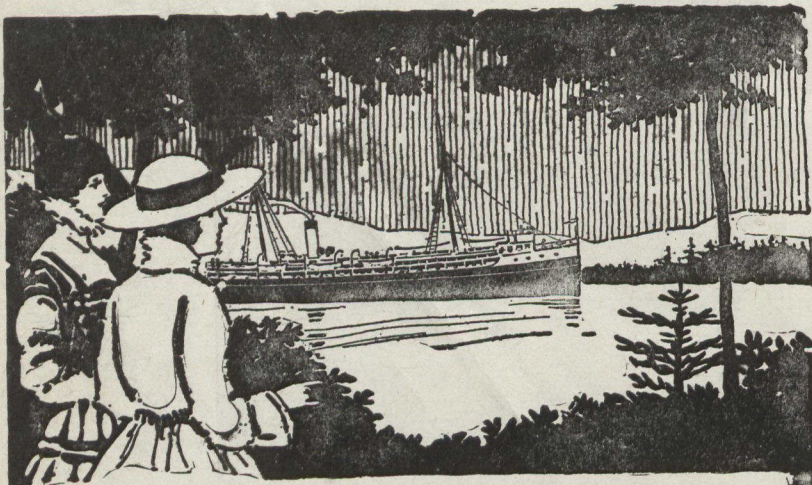
Benefits are payable to the Beneficiary in case of death, or to the member in case of his total disability, or to the member on attaining seventy years of age.

Policies issued from \$500 to \$5,000.

TOTAL BENEFITS PAID, 49 MILLION DOLLARS.

For further information and literature apply to

FRED J. DARCH, S.S. **E. G. STEVENSON, S.C.R.**
Temple Buildings, TORONTO.



**A GREAT HOLIDAY ON
THE GREAT LAKES**

A cool, short, pleasant holiday through inland seas at moderate cost. The Clyde-built greyhounds of the

CANADIAN PACIFIC

with verandah cafe and perfect appointments are as good as Atlantic liners. Express Steamships "Assiniboia" and "Kewatin" leave Port McNicoll every Tuesday, Thursday and Saturday for Port Arthur and Fort William. Round trip 5 days.



Tickets, information and reservations from Local Agent, or W. B. Howard, District Passenger Agent, Toronto, Ont.



Algonquin Provincial (Ontario) Park

A Thoroughly Universal Vacation Territory Midst Wild and Delightful Scenery.

Ideal Canoe Trips—A Paradise for Campers—Splendid Fishing, 2,000 Feet Above Sea Level.



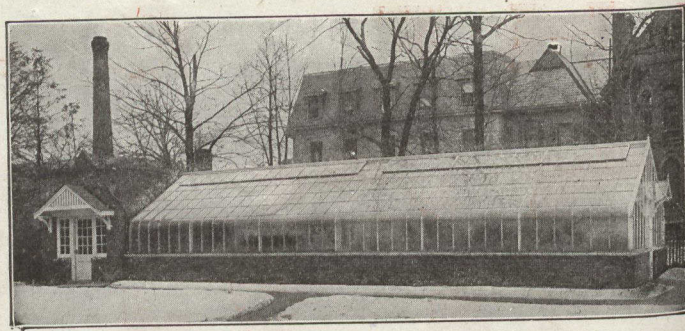
"Nominigan Camp"—Smoke Lake.

The "HIGHLAND INN" affords fine hotel service. Camps "NOMINIGAN" and "MINNESING" offer novel and comfortable accommodation at reasonable rates.

Write for illustrated advertising matter giving full particulars, rates, etc., to C. E. Horning, Union Station, Toronto, or J. Quinlan, Bonaventure Station, Montreal.

G. T. BELL, Passenger Traffic Manager, Montreal.

W. S. COOKSON, General Passenger Agent, Montreal.



**What Are Your Wishes
Regarding a Greenhouse?**

We are equipped to meet your wishes in every particular in the matter of a greenhouse, and it would be well worth your while to send us your name and address, and we will mail you a copy of our beautiful booklet, illustrating some of the styles and designs of greenhouses we have already erected.

Though we build a great variety of greenhouses—they are all alike in the matter of efficiency and those points in construction the professional gardener demands.

When writing for booklet, Address Dept. C.,

GLASS GARDEN BUILDERS, LIMITED

201 Church St., Toronto. Transportation Building, St. James St., Montreal.
Factory—Georgetown, Ont.

**CANADIAN NORTHERN
ALL THE WAY**

From the Laurentians to the Rockies

*Serving Canada's National
Playgrounds including*

Grand Discharge of the Saguenay,
Laurentide National Park,
Algonquin National Park,
Muskoka Lakes,
Georgian Bay Hinterland,
Nipigon Forest Reserve,
Quetico National Park,
Vermillion Lakes,
Jasper National Park,
and Mount Robson National Park

**ALL MODERN EQUIPMENT
SUMMER TOURIST FARES**

For literature and information, apply to General Passenger Department, 68 King St. East, Toronto, Ont.; 226 St. James St., Montreal, Que.; or Union Station, Winnipeg, Man.



RITZ CARLTON HOTEL
SHERBROOKE ST. WEST, MONTREAL



TARIFF
Single Room and Bath from \$3.00 up.
Double Room and Bath from \$5.00 up.
Table D'Hote and a la carte Meals at Moderate Prices.
CANADA'S FINEST HOTEL FRANK S. QUICK, Manager