

ons

ats for 8.00

colors and These pop- excellent marked at an edora styles and colors; s in small, own styles. . . . . 8.00

00 Tweed ats, 95c

arked at a elling. No D. orders. . . . . 95

\$2.50

one-piece nades and . . . . . 2.50 Floor.

Suits 2.45

ly \$16.50 26 to 32.

erge Suits, necks and es, brown and mixed d waistline fashioned throughout, d Governor 8 to 14

s, \$15.00

and gray style with G.R. but- throughout sizes 2 1/2 to

incoats.

incoats, de- k gray rub- All seams and taped.

s. . . 17.50 s. . . 18.50

s, \$13.00

gray and rduroys in uttoned up deep turn- ished with ns. Kneec to 10 . . . 13.00

de Blue ts

in double- on model, and three- er pants, f material. Governor

. . . 19.50 . . . 21.00

Floor.

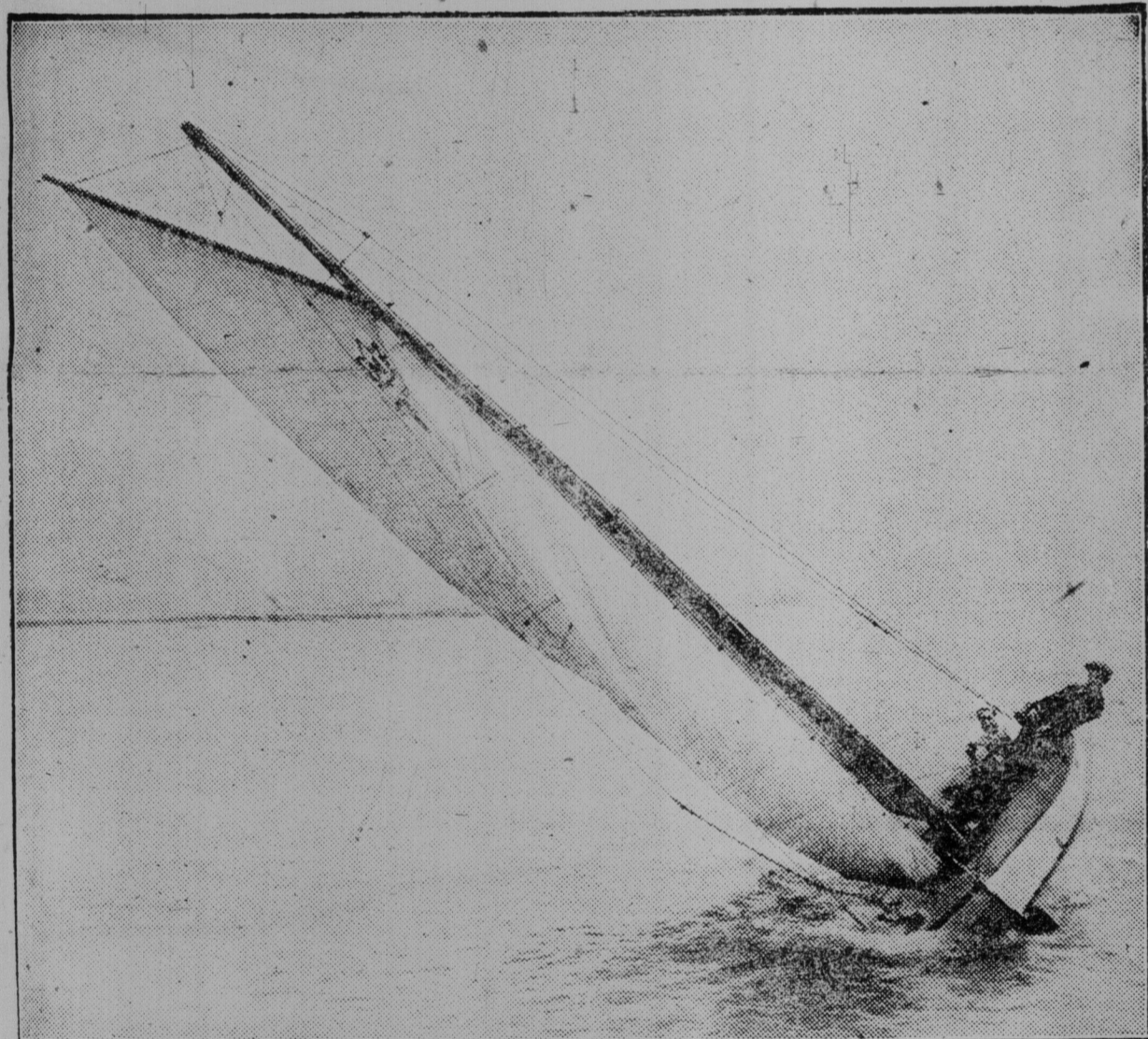
ON Company Limited



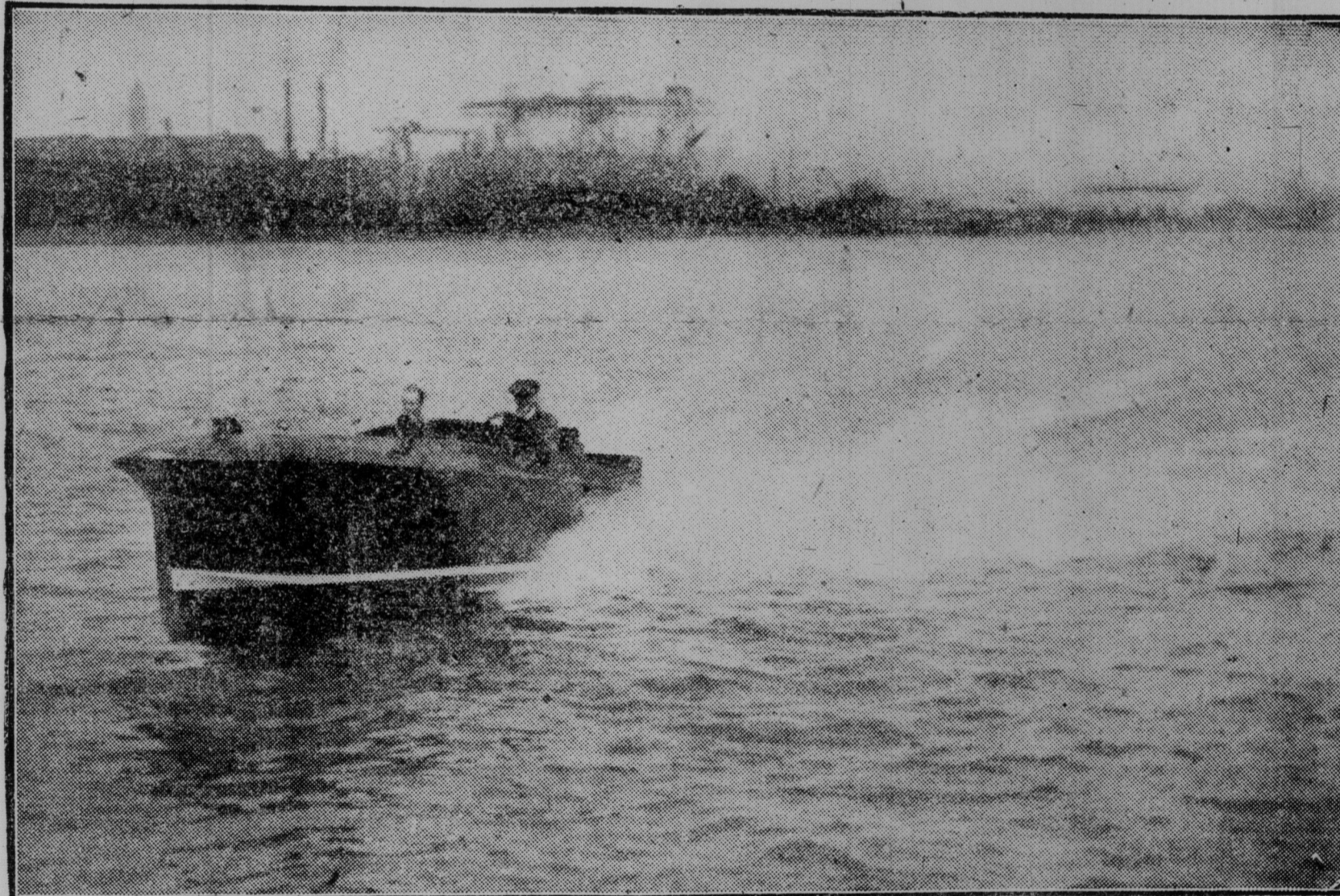
Great War Veterans' banner and general view of the crowd at the opening of the Canadian National Exhibition.



Arrival of Victoria Cross men at the band stand for the reception at the Canadian National Exhibition.



The Alameda, owned by Norman Dyson, winning the Walker Cup at the regatta on August 18.



Leopard V., Giff. Clarke's speed boat, which has been making sensational time this season.



Children from the Sunnyside Home at the International polo races at the Woodbine.



Buffalo polo team at the International polo matches at the Woodbine, showing Capt. Coleman Curtis third from the left.