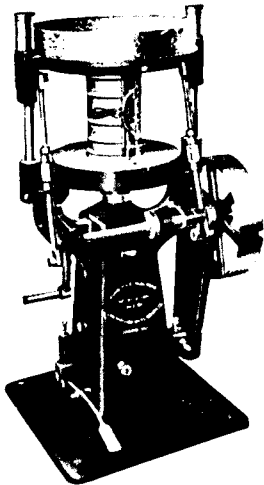


London Concrete Machinery

Is not built down to a
Price, but up to a
Standard



Dunn Cement Drain Tile
Machine

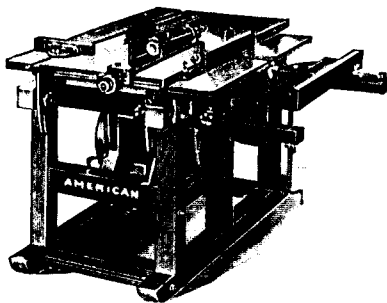
We cannot
afford to
make
anything but
the best



London Standard Drum Batch Mixer.

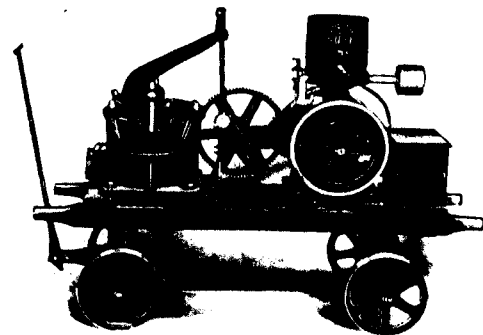
There are large profits in the manu-
facture of Cement Drain Tile.
Write for particulars.

Over 600 London Concrete Mixers
Sold in Canada in Three Years



Variety Woodworker

No Contractor can afford
to be without a Variety
Woodworker



Diaphragm Pump with Power

We Manufacture a complete line of Contractors' Machinery, Concrete Mixers, Hoisting Engines. All kinds of Pumps, Block Machines, Brick Machines, Tile Moulds, Derricks, Cars, Ornamental Moulds, Wheel-barrows, Carts, Scrapers and Cement Working Tools.

London Concrete Machinery Co., Limited

Head Office and Factory: Cabell St. and Kitchener Ave., LONDON, Ont.

Branches:

WINNIPEG—445 Main St.—W. H. Rosevear, Manager.
TORONTO—60 Richmond St. E.—F. D. Emsley, Manager.

Agencies:

VANCOUVER—B.C. Equipment Co.
FORT WILLIAM, ONT.—Northern Engineering and Supply Co.
REGINA, SASK.—H. A. Knight.
MOOSE JAW, SASK.—Sask. Bridge and Iron Co., Ltd.
MONTREAL, QUE.—Foss & Hill Machinery Co.
QUEBEC, QUE.—A. D. Masson.

We are the Largest Manufacturers of Concrete Machinery in Canada