

Church's Cold Water Alabastine.

The Best
Wall Coating
On the Market.
Sold by
Paint and Hardware
Dealers everywhere.
New Advertising
Features
This Season.
150 Newspapers
Educating the
People.
Order now.
Invoices dated
April 1st.

Our Travellers now on the
road.

THE ALABASTINE CO., Ltd.
PARIS, ONT.

Stop that = = Waste

Culling lumber with a circular saw wastes 25 per cent. of the log in saw dust, while a Band wastes but 10 per cent., producing 20 per cent. more lumber, cutting it also truer, smoother, nearer to the ultimate size

Why not investigate?

The Band is no experiment.

We build the new "ALLIS" Band—acknowledged the best. Band Saw Tools. Band Saws. We will teach your circular man how to handle Band Saws successfully. Write us to-day.

WATEROUS

BRANTFORD, CAN.

future. The views of buyers and sellers are somewhat apart; approximate quotations are, for finest western, 9 to 9½c.; finest eastern, 8½ to 9c.; summer goods, 8 to 8½c. per lb. Fresh made creamery butter is in fair demand at 20 to 21c.; other grades are dull. New laid eggs bring 20c. and upwards; limed, 13 to 14c. per dozen. The tendency of the market is if anything downwards.

FISH.—The market remains without change. The demand is fair, but the volume light as compared with the business of several years ago. We quote:—Dry cod, \$4.25 to 4.50; boneless cod, 6c.; green cod, No. 1, \$4.00 to 4.25; No. 1, large, \$5.00 to 5.50; Nova Scotia herring, \$3.50 to 3.75; Labrador ditto, \$4.25 to 4.75; No. 1 salmon, \$12 to 13.00; sea trout, \$5 to 6.00; fresh haddock and cod, 3½ to 4c.; fresh herring, \$1 per hundred; smoked haddies, 6½ to 7c.

GROCERIES.—There are no important variations in values since last writing. Sugars continue firm at the last advance. Raws still show upward tendency, and beet touched the highest figure yet, for March delivery, on Monday The Redpath factory is still shut down, and there is continued scarcity of low grade yellows. Granulated quotes at 4½ to 4¾c. per lb., at refinery, as to lot: yellows from 3¾c. up. There are no definite advices yet from the islands as to the new crop of molasses. A transaction in Porto Rico, some 200 puncheons at 31c., is reported since last issue. In a jobbing way, Barbadoes is quoted at 37c.; Porto Rico, 35 to 36c. per gal. A more active enquiry is reported for teas, which has resulted in some fair transactions between importers and jobbers, principally in Japans at about 14c., with some moderate lots of blacks. Coffees are quiet; we quote Java, 25 to 27c.; Mocha, 25 to 28c.; Rio, 17 to 19c.; Maracaibo, 19½ to 21c. per lb. California loose muscatel raisins are firmer, and would cost 6½c. laid down, for 4-crown of best brands, but quotation is still 6½ to 7c.; the stock on the Coast is reported as now very small. California dried apricots are firmer, but peaches are easier, owing to forced sales in New York. Valencia raisins are in light supply, and firm at 4 to 4½c. for common off stalk; 4½ to 5c. for fine ditto. Canned goods are dull at unchanged prices.

HIDES AND TALLOW.—The hide market remains on the same level, dealers buying at 6, 5 and 4c. per lb. for Nos. 1, 2 and 3 green hides respectively, and the quotation to tanners being on the basis of 7c. for No. 1. Calfskins are coming in more freely, and bring 6c. per lb.; a few spring lambs have been received, but only fetch 10c.; sheepskins, 70 to 75c. each. Tallow dull, at 4½ to 5c. per pound.

LEATHER.—Shoe manufacturers complain of quite a few cancellations of spring orders, and continue to buy lightly. Prices are easier. Spanish sole has dropped a good two cents in the United States during the past fortnight, and on spot waxed upper and grain could only be sold at considerable concessions. A letter just to hand from a tanner reports good returns for splits from England, light having realized 10½d., and American tanners are reported as sold ahead to England. On the local market this latter class of leather holds its own pretty well. We quote:—Spanish sole B.A. No. 1, 22 to 24c.; do. No. 2, 19 to 21c.; No. 1 ordinary Spanish, 19 to 21c.; No. 2, 18 to 19c.; No. 1 slaughter, 21 to 24c.; No. 2 do., 19 to 20c.; common, 17 to 19c.; waxed upper light and medium, 27 to 30c.; do. heavy, 25 to 28c.; grained, 25 to 30c.; Scotch grained, 25 to 30c.; western splits, 18 to 21c.; Quebec do., 13 to 16c.; juniors, 16 to 17c.; calf-splits, 30 to 35c.; calf skins (35 to 40 lbs.), 60 to 65c.; imitation French calf skins, 65 to 75c.; colored calf, American, 25 to 28c.; Canadian, 20 to 22c.; colored pebble cow, 14 to 15c.; russet sheepskin linings, 30 to 40c.; colored, 6 to 7½c.; harness, 25 to 32c.; buffed cow, 12 to 13c.; extra heavy buff, 14c.; pebbled cow, 10 to 13c.; polished buff, 10 to 12c.; glove grain, 11 to 12c.; rough, 20 to 22c.; russet and bridle, 40 to 50c.

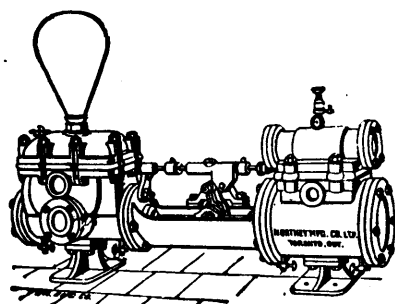
METALS AND HARDWARE.—The market remains dull, and orders for heavy metals are few and small in amount. Some few import orders have been booked for galvanized sheets, and also for some fair lots of tin plates at low prices; but apart from this, we hear of little doing. We quote:—Coltness pig iron, none here; Calder, No. 1, none here; Calder, No. 3, none here; Sumnerlee, \$20.00 to 21.00; Eglinton, \$18.00 to 18.50; Gartsherrie, none here; Carnbroe, \$18.50 to 19.00; Shotts,

See it

If you haven't seen it. It is a business paper for everybody. No man engaged in mercantile pursuits can afford to be without it. It gives you in a convenient form the gist of everything published in all of the most prominent financial and trade papers in the country, besides an abundance of fresh and original matter upon the most important topics affecting the business world. When you read the "Lawyer and Credit Man and Financial-Trade-Press Review" you feel as if you had read everything worth reading along business lines—and you have.

WINSBOROUGH-IRVINE CO.,
Times Bldg., N. Y.

Sample copy sent free if you will mention this paper.



Duplex

AND SINGLE

Steam

AND POWER

Pumps

Hydraulic Presses

FOR ALL PURPOSES

Northey— Mfg. Co.

Limited

TORONTO.

Laurie Engine Co., Montreal, Sole
Agents Quebec Province.