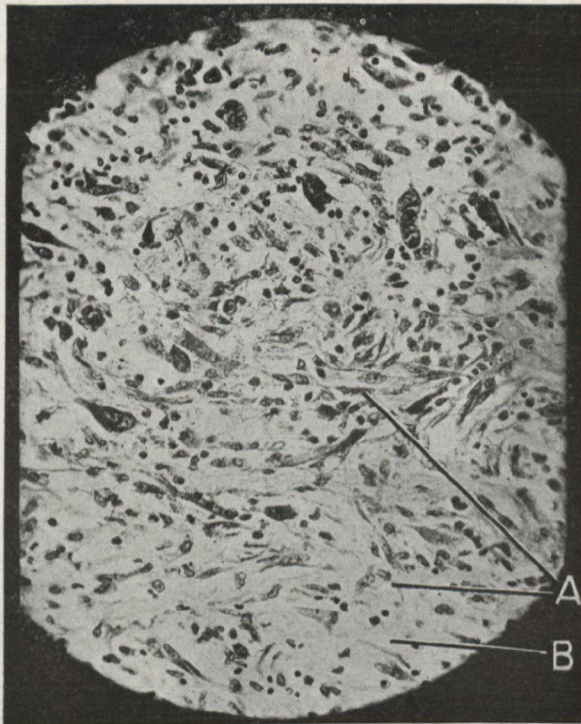


connective tissue cells have been mobilized and also the leucocytic infiltration is most intense; due doubtless to the trophic stimulus the connective tissue has become vascularized not by a mere inflammatory reaction, but by a truly specific stimulus,



SECTION VII.

After Radium exposure.

High power view of section of sarcoma. Compare this section with Section IV to note the remarkable change.

- A.—Note complete change in type of cell from huge vegetative round cell to definite and regular smaller shaped cell, more adult in type. Connective tissue cell and spindle cells.
- B.—Myxomatous changes supervening in some parts of section.

which has expressed itself in the definite form of connective tissue elements.

From a review of the literature and study of our specimens we are forced to conclude and agree with other original workers that due to the influence of radium the tumor cells undergo