

Fig. 23.

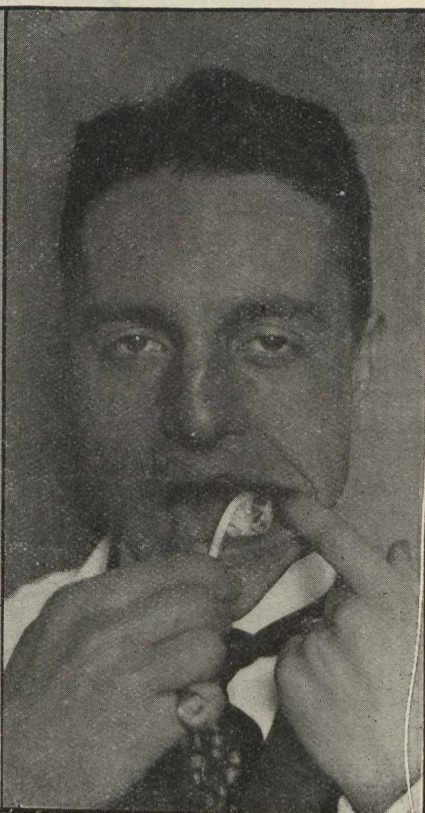


Fig. 24.

together with plenty of moderately cold pure water. Most brushes which are offered for sale are too large, but it is possible now to obtain brushes which are nearly ideal. One should use a brush of such a size that it may be readily passed between the cheek and the most posterior tooth. In the permanent set this is the wisdom tooth, which rarely receives proper care, because a large brush will not reach it handily, and thus it often decays early, and is looked upon by many as a tooth of poorer quality than the rest, which is not necessarily the case.

The head of an ideal tooth brush for an adult—that is the portion which carries the bristles—should not be longer than one and a half inches or wider than one-third of an inch. The bristles should be arranged in two rows, each of about seven good-sized *tufts of equal length*, and one tuft additional to round off the end. The tufts of each row should be directly opposite each other and the