

OUR CHESS COLUMN.

**Solutions to Problems sent in by Correspondents will be duly acknowledged.**

All communications intended for this department to be addressed Chess Editor, Office of CANADIAN ILLUSTRATED NEWS, Montreal.

TO CORRESPONDENTS.

J. W. S., Montreal.—Letter and interesting contents received. Many thanks.  
Student, Montreal.—Correct solution of Problem No. 135 received.

J. B., Montreal.—Many thanks for the score of the game sent for inspection. It shall be carefully looked over.

Owing to unforeseen circumstances the Dominion Chess Congress and Tourney, held this year at Quebec, which was advertised for the 21st of August, was postponed to the 28th, and this change of the time of the meeting led to modifications of the customary manner of carrying on the contest between the players on the occasion.

In the first place it was perceived that several of the players having lost time by the postponement, could make but a short stay at Quebec, and that facilities would have to be afforded them to play all their games with the players of that city before their departure. In the second place inasmuch as every player of the Tourney would have to play one game with every other player, it was stipulated at the opening meeting that the Montreal players on their return to their own city should finish their games with one another and transmit the results to the Club at Quebec in order to make up the final score. The Quebec players, also, would have to finish their contests among themselves, before the full particulars of the Tourney could be published.

The subjoined item from the *Montreal Witness* gives the condition of the contest at the time of the return of Montreal players.

CHESS.

The score of the Tourney in Quebec, as it stood last Saturday evening, is given below. The competitors, eleven in number, were on this occasion confined to the cities of Montreal and Quebec, the Province of Ontario not having sent representatives.

By arrangement the contest as between the two cities was first entered upon and has been finished, except in the case of Professor Hicks, who has still three games to play against the old Capital, his duties having required his return to Montreal last Thursday week.

QUEBEC.

	Won.	Lost.	Drawn.
Holt.....	4	1	1
White.....	3	0	3
Sanderson.....	3	1	1
Fletcher.....	1	2	1
Pope.....	2	6	1
McLeod.....	0	4	0
Bradley.....	0	6	0

MONTREAL.

Howe.....	5	0	2
Hicks.....	3	0	1
Henderson.....	3	3	1
Shaw.....	3	4	0

The Montrealers have yet to play against each other. So also, but to a less extent, the Quebecers. Our players have all returned gratified by the hospitable hostility of their opponents.

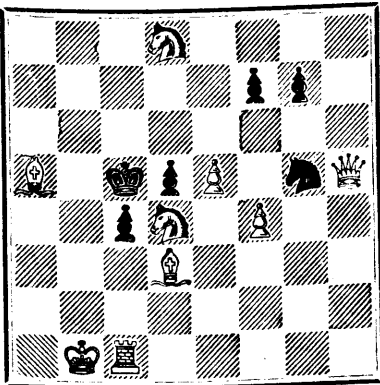
The annual meeting in England of the Counties Chess Association, which in its nature and object is similar to our Dominion Chess Association, took place this year at Birmingham. There were thirty competitors, who were divided into three classes, and prizes were contested for by each class. At the close of these, a handicap tourney was commenced for which sixteen players entered. The subjoined game was played in this handicap tourney.

PROBLEM NO. 139.

By J. G. CAMPBELL.

(From English Chess Problems.)

BLACK.



WHITE.

White to play and mate in three moves.

GAME 301ST.

(From Land and Water.)

Occurring in a handicap tourney at Birmingham, the Rev. Professor Wayte giving Queen's Knight to Mr. Shorthouse.

(K B's opening—Remove White's Q Kt.)

WHITE.

(Prof. Wayte.)

1. P to K 4

2. B to B 4

3. P to Q B 3

4. B to Kt 5 (ch)

5. B to R 4

6. Kt to K 2

7. P to Q 3

8. Castles

9. P to K B 4

10. P to R 3

11. Q takes B

12. B to B 2

13. B takes P

14. P to K 5 (b)

15. B takes P

16. P to Q 4

17. Q R to K sq

18. Q to K B 3

19. P takes Kt

20. K to R sq

21. Q to K B 5

22. P takes Kt

BLACK.

(Mr. Shorthouse.)

P to K 4

P to Q 3

B to K 3 (a)

P to Q B 3

B to K 2

Kt to B 3

P to K R 3

Q Kt to Q 2

B to Kt 5

B takes Kt

Kt to Q B 4

P takes P

P to K Kt 4

P takes P

Castles

Q Kt to Q 2

R to K sq

Kt takes B (c)

B to B 4 (ch)

Q to Q 7

B to B 7

R takes R

And White now mated in two moves.

NOTES.

- (a) Black is evidently inexperienced, and seems disposed to rely upon exchanging pieces to make the odds tell in his favour.
- (b) Intending, if P takes B, to capture the Kt afterwards, winning the "pinned" Bishop.
- (c) This is suicidal, but his case appears hopeless anyhow.

GAME 202ND.

Played recently in London, Eng., between Mr. Ensor and an amateur; the former giving the odds of Q R.

(Evans' Gambit.)

(Remove White's Q R.)

WHITE.

(Mr. Sydney Ensor.)

1. P to K 4

2. Kt to K B 3

3. B to B 4

4. Castles

5. P to Q Kt 4

6. P to Q B 3

7. P to Q 4

8. P takes P

9. P to Q 5

10. B to Q Kt 5

11. P to K 5

12. Q takes Kt

13. Q to K 4

14. Kt to B 3

15. Kt to Kt 5

16. Kt to Q 5

17. Q to R 4

18. Kt to B 6 (ch)

19. Kt takes R P (ch)

20. Q takes P

21. Q to R 7 (ch)

22. Q to R 6 (ch)

23. Kt to R 7

24. B to Kt 5 (ch)

25. B takes Q

26. Kt to B 6 (ch)

27. R to Q B sq (ch)

28. Kt to K 8

29. K to B sq

30. Q to B 6

31. R to B 3

32. R takes Kt

33. Q takes R

34. Kt takes P

35. Kt takes B (ch)

BLACK.

(Mr. T.)

P to K 4

Kt to Q B 3

B to B 4

Kt to B 3

B takes P

B to Q B 4

P takes P

B to Kt 3

Kt to Q R 4

Castles

Kt takes Q P

P to Q B 3

P takes B

R to K sq

P to K Kt 3

Kt to B 5

P to K R 4

K to Kt 2

P takes Kt

Kt takes K P

K to B 3

K to K 2

P to Q 3

K to Q 2

R takes B

K to B 2

K to Kt sq

B takes P (ch)

Kt to Q 6

B to Kt 3

Kt to B 4

B takes R

P to R 3

K to R 2

Resigns.

SOLUTIONS.

Solution of Problem No. 137.

WHITE.

1. B to Q Kt 5

2. B to Q 7 mate

3. Kt mates acc.

BLACK.

1. P to K 4 (a)

(a) 1. Either Kt moves

Variation.

1. B to K R 6

2. P to Q 5

3. Kt mates acc.

1. P to K 4

2. Any move.

Solution of Problem for Young Players, No. 135.

WHITE.

1. Q to Q R 8

2. Mates accordingly.

BLACK.

1. Any move.

PROBLEMS FOR YOUNG PLAYERS NO. 136.

(Exercise in pawn play.)

WHITE.

K at K B 7

Pawns at K R 5

and K Kt 5

BLACK.

K at K R sq

Pawns at R 2

K Kt 2, K B 3

and Q 4

White to play and win.

**EMPLOYMENT.** We are offering good pay and steady work for one or two enterprising men or women in each County. Send for the most complete Illustrated Chromo Catalogue ever published. W. H. HOPE, 26 Bleury Street, Montreal.

**British American BANK NOTE COMPANY,**  
MONTREAL.  
Incorporated by Letters Patent.  
Capital \$100,000.

**General Engravers & Printers**

Bank Notes, Bonds,  
Postage, Bill & Law Stamps,  
Revenue Stamps,  
Bills of Exchange,  
DRAFTS, DEPOSIT RECEIPTS,  
Promissory Notes, &c., &c.,  
Executed in the Best Style of Steel Plate Engraving.  
Portraits a Specialty.  
G. B. BURLAND,  
President & Manager.

**J. K. MACDONALD,**  
BLACKSMITH, BELL HANGER, LOCK SMITH,  
&c., 24 Latour Street, Montreal.  
REPAIRS PROMPTLY ATTENDED TO.  
15-18-52-238

In consequence of spurious imitations of  
**LEA AND PERRINS' SAUCE,**  
which are calculated to deceive the Public, Lea and Perrins have adopted A NEW LABEL, bearing their Signature, thus,

*Lea & Perrins*

which is placed on every bottle of WORCESTERSHIRE SAUCE, and without which none is genuine.  
Ask for LEA & PERRINS' Sauce, and see Name on Wrapper, Label, Bottle and Stopper. Wholesale and for Export by the Proprietors, Worcester; Crosbie and Blackwell, London, &c., &c.; and by Grocers and Oilmen throughout the World.

To be obtained of  
MESSRS. J. M. DOUGLASS & CO., MONTREAL; MESSRS. URQUHART & CO., MONTREAL.  
14-14-52-156

**MARVEL OF THE AGE!**  
No House can be comfortably conducted without a  
**CALKINS CHAMPION WASHER.**



The most complete success of any invention that has ever been introduced. It washes perfectly and easily, without any hard work or wear to the clothes. Saves its cost, which is only \$7.50, in six months. No Family ought to be without one. Manufactured and sold by STOCKTON, ROSSITER & Co., 102 King Street West, Toronto. LARMONTH & SONS, 33 College Street, Agents for Montreal. 16-9-52-282

**CHEAPEST AND BEST.**



**JOHN DOUGALL & SON,**

218 and 220, St. James Street, Montreal.

Electrotyping and Job Printing, Chromatic and Plain cheaply and neatly done.

**THOS. CREAN,**  
MERCHANT AND MILITARY TAILOR.  
(LATE MASTER TAILOR IN H.M.S.)

SCOTCH TWEEDS, and ENGLISH SERGES  
BLACK, BLUE, and GREEN, for Suits, always on hand.

No. 435, Yonge Street,  
TORONTO.

**OTTAWA RIVER NAV. CO'S STEAMERS**  
BETWEEN MONTREAL AND OTTAWA.

Passengers by Day boat leave Montreal and Ottawa every morning at 7 a.m.

By Night boat leave Montreal and Ottawa at 5 p.m., except on Saturday. Baggage checked through.

Tickets at 13 Bonaventure St. and at Railway Station, Montreal, and at Office, Queen's Wharf, and Russell House, Ottawa.

R. W. SHEPHERD,

President.

15-21-26-259

**DR. A. PROUDFOOT,**  
OCULIST AND AURIST.  
Artificial Eyes inserted. Residence, 37 Beaver Hall, Montreal. 15-8-52-210

**\$5 to \$20** per day at home. Samples worth \$5 free. STINSON & Co., Portland, Maine

**TO LET**

FIRST-CLASS BRICK DWELLING, No. 1464 Abbottsford Terrace (opposite Emmanuel Church), St. Catherine Street, in good order, well drained, and rat roof. Rent moderate.

Apply to

G. B. BURLAND,  
Burland-Desbarats Lith. Co., Bleury St.

**JOHN MCARTHUR & SON,**  
OIL, LEAD, PAINT,  
COLOR & VARNISH MERCHANTS  
IMPORTERS OF

English and Belgian Window Glass, Rolled, Rough and Polished Plate Glass, Colored, Plain and Stained Enamelled Sheet Glass.

PAINTERS' & ARTISTS' MATERIALS, BRUSHES, CHEMICALS, DYE, STUFFS, NAVAL STORES, &c.

310, 312, 314 & 316 ST. PAUL ST.,

AND

253, 255 & 257 COMMISSIONERS ST.

MONTREAL.

15-24-52-268



**CAUTION.**—A great many Gentlemen buy their Shirts ready-made with a view to economy. If you really wish to study economy, the best way is to order your Shirts, which will cost no more and will keep clean longer than ready-made. Printed instructions and price list sent free. Address:

A. WHITE.

15-23-13-265