

MINING SHOVELS

our 'FENERTY' Brand

COOK'S PAN SHOVELS,
COAL TRIMMERS SHOVELS,
SCRAPER SHOVELS, ETC.

—ARE USED BY—

The Largest Mines in Canada

MANUFACTURED BY
The HALIFAX SHOVEL CO.

HALIFAX, N. S.

ALL GOODS GUARANTEED

**ORNAMENTAL
IRON WORK
WIRE CLOTH
WIRE GOODS**



WE SPECIALIZE IN MINER'S
SCREENS made of HARD STEEL
WIRE or PERFORATED SHEET
STEEL.
INQUIRIES SOLICITED.

**CANADA WIRE GOODS MFG. CO.
HAMILTON.**

THE GARLOCK PACKING CO.
Hamilton, Ontario

—Manufacturers of—

GARLOCK PACKINGS

"Be sure you get the Genuine."

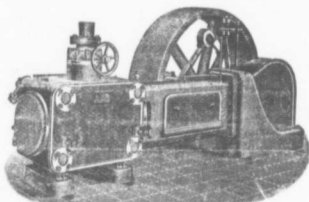
**Everything in PACKINGS,
and ENGINEERS SUPPLIES.**

Used by Collieries in Lancashire, & Stafford-
shire & Yorkshire

'XTERRA' COLLIERY LAMP OIL
For Marmat, Muesels Deflector or Closed Lamp.

PURE WHITE FLAME. LOW PRICE.
E. WOLASTON, Dutton St. MANCHESTER
Sole Representatives for Canada, AUSTEN BROS.,
Halifax, N. S.

Robb Corliss Engines



Have the Armstrong-Corliss valve gear,
which will operate at a higher speed than the
ordinary releasing gear.

This valve gear does not depend on springs
or dash pots for closing, and runs without noise.

The wearing parts of the valve gear are
enclosed in a casing and run in oil so that
friction is reduced to a minimum.

**ROBB ENGINEERING COMPANY, L't'd,
AMHERST, N. S.**

**INTERCOLONIAL
RAILWAY**

THROUGH SERVICE TO

Montreal

VIA THE ONLY

ALL CANADIAN ROUTE.

NO 20 CONNECTION FOR
CANADA'S FAMOUS TRAIN THE

MARITIME EXPRESS

Leaves Stellarton 15.15

(Daily except Sunday)

Arrives Montreal 18.30

(Daily except Monday)

Parlor Car Sydney to Truro.

THROUGH SLEEPING CARS AND DINING CAR
TRURO TO MONTREAL.

The Most Comfortable

Train in America.