

Miners Wanted

TO CHEW!

PAY ROLL

Plug Tobacco

WANTED.

At the several collieries of the Dominion coal co. Limited, skilled coal miners and mine laborers.

Apply on the works Or by letter

Dominion Coal Company, Ltd

Genuine Garlock Packings
FOR ALL PURPOSES.
Pipe and Boiler Coverings,
ENGINEERS SUPPLIES.

also

"Tauril" High Pressure Jointing
the Best Sheet Packing yet
Produced.

THE GARLOCK PACKING CO.
HAMILTON, ONTARIO.

Used by Collieries in Lancashire, Staffordshire
& Yorkshire

'XTERRA'

COLLIERY LAMP OIL.

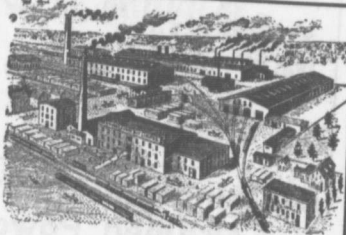
For Marsuit, Micaels' Deflector or Closed Lamp

PURE WHITE FLAME

LOW PRICE

E. WOLASTON, Dutton St MANCHESTER

Sole Representatives for Canada, AUSTEN BROS.,
14 Vifax, N. S.



RAILWAY
STREET and
MINING

—MANUFACTURERS OF—

CARS,

CAR WHEELS
FORGINGS &
CASTINGS

Church Pews,
Fittings for Stores, Schools, &
A SPECIALTY

Large Stocks of Foreign and Domestic Lumber on Sale.

Rhodes, BUILDING MATERIALS
Curry & co., Ltd. GENERAL
Branch BOBBIE STREET,
HALIFAX, N. S. AMHERST, N. S.

INTERCOLONIAL RAILWAY

On and after MONDAY, JUNE 16 1907 trains
run daily, Sunday excepted, as follows:—

—TRAINS LEAVE STELLARTON—

No 144 Mixed for Hopewell	5.55
No 79 Mixed for Truro	6.25
78 Mixed for Hopewell	6.35
19 Express for Halifax, and St. John	7.40
21 Mixed for Pictou Landing	7.40
65 Mixed for Pictou	7.45
65 Express for Mulgrave	8.39
19 Express for Syd y	8.55
28 Mixed for Pictou	11.00
66 Mixed for Truro	12.35
65 Express for the Sydney	12.40
20 Express for Halifax and Montreal	12.40
140 Mixed for Pictou	12.45
140 Mixed for Pictou Landing	12.50
22 Mixed for Ho swell	12.50
65 Mixed for New Glasgow	12.50
20 Express for Halifax and St. John	12.50
17 Express for New Glasgow	12.50
66 Express for Pictou	12.55

—TRAINS ARRIVE AT STELLARTON

79 Mixed from Hopewell	6.30
78 Mixed from Truro	6.55
61 Express from Pictou	7.35
15 Express from New Glasgow	7.35
21 Mixed from Hopewell	7.35
65 Mixed from Truro	7.35
28 Mixed from New Glasgow	8.50
67 Mixed from Pictou	10.35
66 Mixed from Mulgrave	10.40
19 Express from Halifax and St. John	12.15
129 Mixed from Pictou	12.45
85 Express from Halifax and St. John	12.50
20 Express from Sydney	12.50
22 Mixed from Pictou Landing	12.50
77 Mixed from Hopewell	12.50
65 Mixed from Pictou	12.50
65 Express from the Sydney	12.50
20 Express from Halifax and Montreal	12.50
66 Express for Pictou	12.50
17 Express from St. John and Halifax	12.50

Altitude sea level by Atlantic Standard time Twenty four
O'clock is mid-night, Moncton, N. B. June 15th, 1907
Parlor Cars between Halifax and Sydney, Dining Car
on No. 65 train between Halifax and Mulgrave, on No. 89
train between Mulgrave and South River, on No. 19 train
between South River and Mulgrave, On 85 train between
Mulgrave and Halifax.