

tives passing over a difficult division, loaded down to its full capacity. Actual experience has, however, demonstrated that this was an erroneous impression, as it simply required a little skill and knowledge of the requirements, rather than great physical strength, to accomplish the work. Now that this fact is generally known a good class of students are following up the work as firemen, from whom selections will be made in the future to successfully manage our modern locomotives.

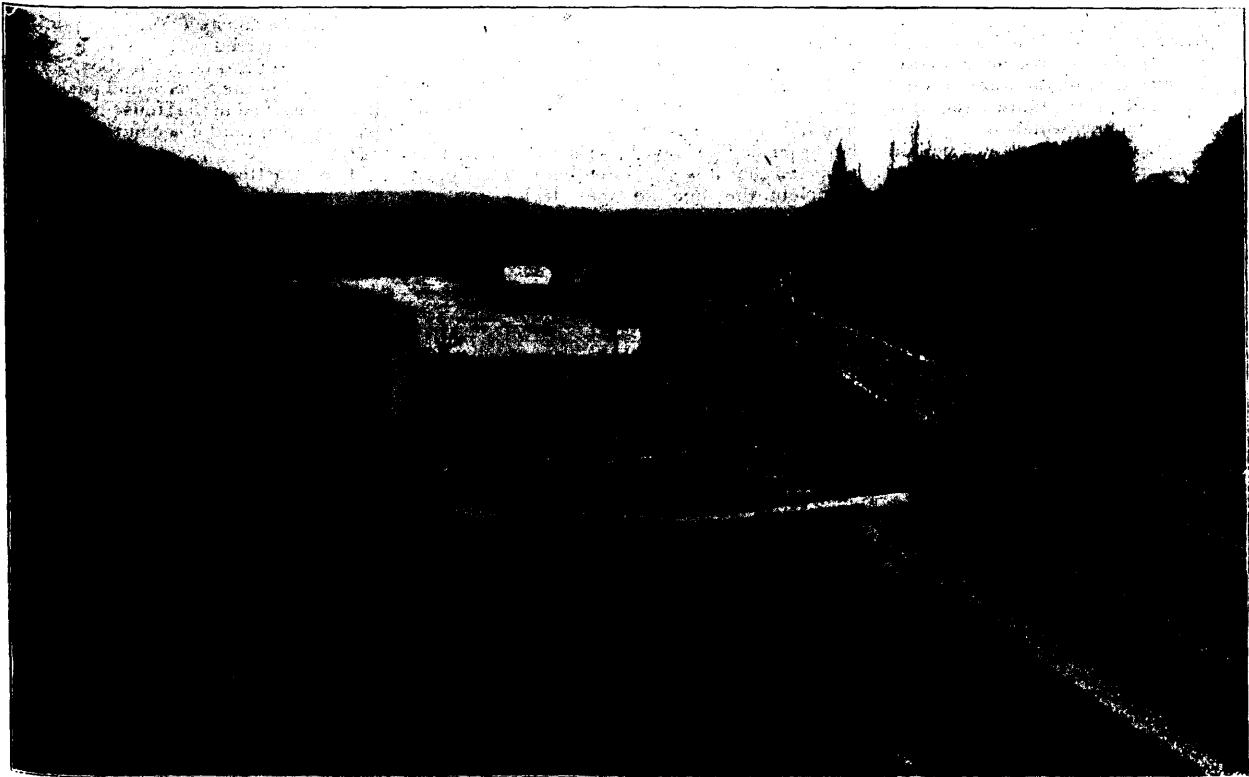
The foregoing paper was read at the last meeting of the Canadian Railway Club in Montreal.

**Recent Dominion Legislation.**

The following acts affecting steam and electric railways, shipping, telegraph, express

- Respecting the St. Clair and Erie Ship Canal Co.
- Respecting the Tilsonburg, Lake Erie and Pacific Ry. Co.
- Respecting the Windsor and Detroit Union Bridge Co.
- Incorporating the Indian River Ry. Co.
- Incorporating the St. Lawrence and Northern Ry. Co.
- Incorporating the Nipissing and Ottawa Ry. Co.
- Incorporating the Strait of Canso Bridge Co.
- Respecting the Ontario Power Co. of Niagara Falls.
- Respecting the Central Counties Ry. Co.
- Respecting the Medicine Hat Ry. and Coal Co.
- Respecting the Vancouver, Victoria and Eastern Ry. and Navigation Co.

- Incorporating the Essex Terminal Ry. Co.
- Respecting the Hudson's Bay and North-West Ry.'s Co.
- Respecting the Canadian Northern Ry. Amending the pilotage act.
- Respecting the Montreal and Southern Counties Ry. Co.
- Incorporating the Toronto and Niagara Power Co.
- To amend the provision with regard to tolls of chap. 1, statutes of 1881, respecting the C.P.R.
- Amending the Acts relating to the Ottawa, Northern and Western Ry. Co.
- Incorporating the Yukon Pacific Ry. Co.
- Respecting the United Gold Fields of B.C. (Limited).
- Respecting the North'n Colonization Ry. Co.
- Incorporating the Manitoba and Keewatin



THE INTERPROVINCIAL BRIDGE BETWEEN OTTAWA, ONT., AND HULL, QUE.

This bridge has recently been acquired by the C.P.R. Co. in connection with its purchase of the Ottawa Northern and Western, Pontiac Pacific Junction and Hull Electric railways. The platform is 65 ft. 2 in. wide, accommodating 1 steam railway track, 2 electric railway tracks, 2 carriage ways and 2 sidewalks. A complete description appeared in our issue of July, 1900. The illustration shows the approach to the bridge from the Central station, Ottawa, along the edge of Nepean Point. The locks shown are on the Rideau canal, connecting it with the Ottawa river. At present the bridge is used by the Ottawa Northern and Western, the Pontiac Pacific Junction and the Hull Electric railways. Beginning June 15 the C.P.R. transcontinental trains will run between Montreal and Ottawa via Vaudreuil and the short line, instead of on the north side of the Ottawa river, as at present. From the Central Station, Ottawa, the train will cross over the Interprovincial bridge to Hull, thence over the north shore line to the Union Station in Ottawa, and thence west, as at present. The eastbound transcontinental trains will also use the bridge.

- and kindred interests, were passed at the last session of the Dominion Parliament :
- Respecting the Orford Mountain Ry. Co.
- Respecting the Canada Southern Ry. Co.
- Respecting the Canada and Michigan Bridge and Tunnel Co.
- Respecting the River St. Clair Ry. Bridge and Tunnel Co.
- Respecting the Edmonton and Slave Lake Ry. Co.
- Respecting the Quebec and Lake Huron Ry. Co.
- Changing the name of the Port Dover, Brantford, Berlin and Goderich Ry. Co., to the Grand Valley Ry. Co., and for other purposes.
- Respecting the Buffalo Ry. Co. and the International Ry. Co.
- Incorporating the Velvet (Rosland) Mine Ry. Co.
- Incorporating the Battleford and Lake Lenore Ry. Co.

- Respecting the Medicine Hat and Northern Alberta Ry. Co.
- Respecting the Manitoba and North Western Ry. Co. of Canada.
- Incorporating the Knapp Tubular Steamship Co.
- Respecting the James Bay Ry. Co.
- Respecting the Klondike Mines Ry. Co.
- Respecting the Pacific, Northern and Omineca Ry. Co.
- Incorporating the Canadian Northern Express Co.
- Respecting the Timigami Ry. Co.
- Respecting the Niagara, St. Catharines and Toronto Ry. Co.
- Respecting the Canadian Pacific Ry. Co.
- Respecting the Ottawa, Brockville and St. Lawrence Ry. Co.
- Respecting the Trans-Canada Ry. Co.
- Respecting the Bay of Quinte Ry. Co.
- Respecting the Lake Champlain and St. Lawrence Ship Canal Co.

- Ry. Co.
- Incorporating the Nepigon Ry. Co.
- Incorporating the Canada Eastern Ry. Co.
- Respecting the Montreal, Ottawa and Georgian Bay Canal.
- Respecting the Bell Telephone Co. of Canada.
- Respecting the Algoma Central and Hudson's Bay Ry. Co.
- Respecting the Manitoulin and North Shore Ry. Co.
- Respecting the Quebec Southern Ry. Co.
- Amending the railway act.
- Respecting the South Shore Ry. Co.
- Respecting the Lake Erie and Detroit River Ry. Co.
- Incorporating the Canada Central Ry. Co.
- Incorporating the Montreal Subway Co.
- Respecting the Royal Marine Insurance Co.
- Respecting the Coasting Trade of Canada.
- Incorporating the Canadian Northern Telegraph Co.