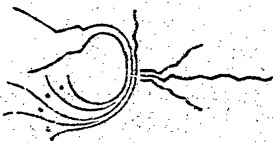


# A Fraud Unmasked



THE CAREER OF MRS.

## MARGARET L. SHEPHERD



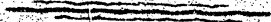
“Ex-Romanist,”  
“Ex-Nun,”  
“Ex-Penitent,”  
And Bigamist.



### HER OWN CONFESSIONS



Attested By Most Reliable  
Witnesses . . . . .



WOODSTOCK, ONTARIO, CANADA, 1893.