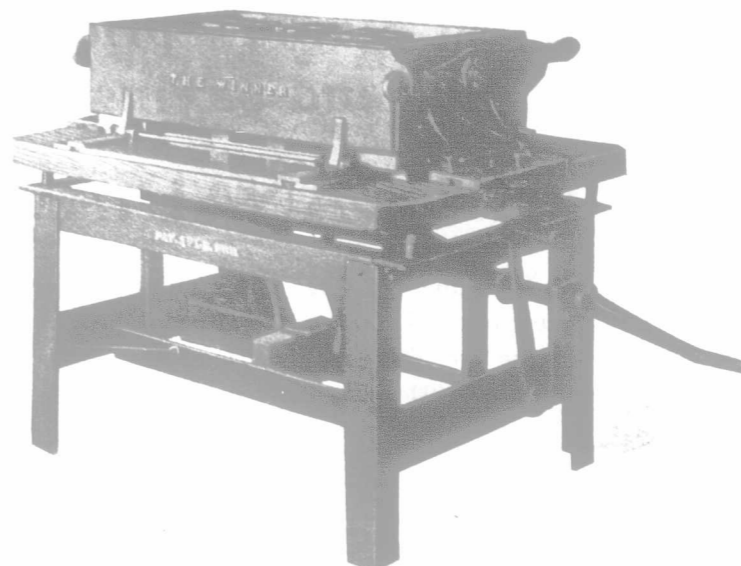


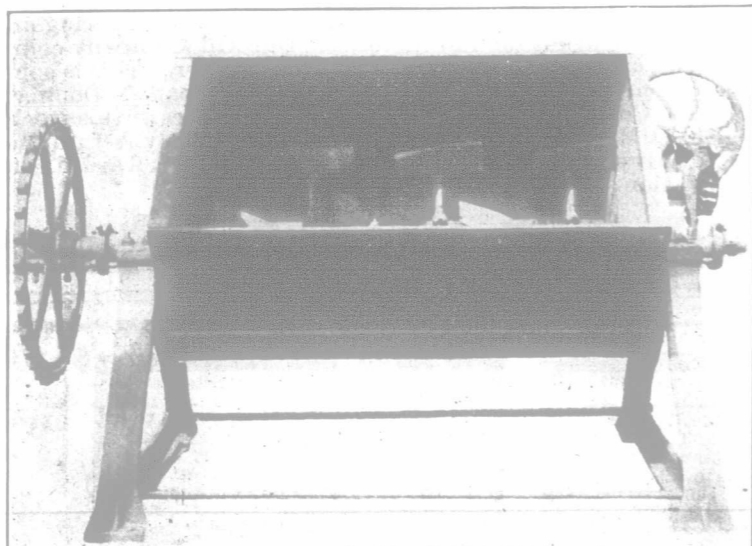
# Winner Block Machine Co.

Manufacturers of

## Hollow Block Machines



The Winner Block Machine.



Cement Mixer.

### Concrete Mixers, Fence Post Molds and Sewer Tile Molds.

Our molds are all copper-lined to handle wet material. Complete outfit for \$1,220, consists of one engine, one mixer, two block machines, one fence post mold, and one sewer tile mold. We can start you in the block business for \$30.00 and upwards. Write for prices for any single article.

AGENTS WANTED

**NILS ERICKSON, GENERAL MANAGER, 549 Main St., Winnipeg**

SEPARATORS  
WIND  
STACKERS.  
FEEDERS.  
BAGGERS ETC.

ENGINES  
PLAIN AND  
TRACTION  
THRESHER  
SUPPLIES

**WATERLOO MFG. CO. LTD.**  
WATERLOO-ONT.

**WATERLOO  
THRESHING MACHINERY**

is well known in every Province of the Dominion to be the best, and will do the best work in all kinds and conditions of grain. If you are interested in this class of Machinery, write to-day for catalogue.  
Engines, Plain and Traction, in sizes 14 h.p. to 25 h.p. Separators in sizes ranging from 33-42 to 40-62.

BRANCHES AT WINNIPEG AND REGINA.

FACTORY  
**WATERLOO-ONT.**

BRANCH OFFICE AND WAREHOUSE  
**WINNIPEG MANITOBA**

British Columbia

## Far Famed Okanagan

Kelowna, B. C.

Fruit and Agricultural Lands, Residential Properties for sale in lots of a size to suit all purchasers. Prices and terms putting it within reach of all. Also town lots. Apply to

**Carruthers & Pooley**

Real Estate Agents,

KELOWNA, B. C.

**SAVE 20 CENTS PER SHEEP** on every sheep you shear with

**STEWART'S IMPROVED 1904 SHEEP SHEARING MACHINE** Price in Canada **\$17**

For sale by all leading jobbers. The day of the old-fashioned hand shears is past. No owner of 10 sheep or more can afford to shear by hand, even though the work be done for nothing. Don't butcher your sheep. Shear with machine and get one pound of wool extra per head. It will more than cover the cost of shearing. Send to-day for valuable book, "Hints on Shearing." It is free, and will save you money.  
**CHICAGO FLEXIBLE SHAFT COMPANY, 110 LaSalle Ave., Chicago.**

**DONALD MORRISON & CO., GRAIN COMMISSION.**

416 Grain Exchange, WINNIPEG.

Licensed, Bonded.

Reference, Bank of Hamilton, Exchange Branch.

In answering any advertisement on this page, kindly mention the FARMER'S ADVOCATE.