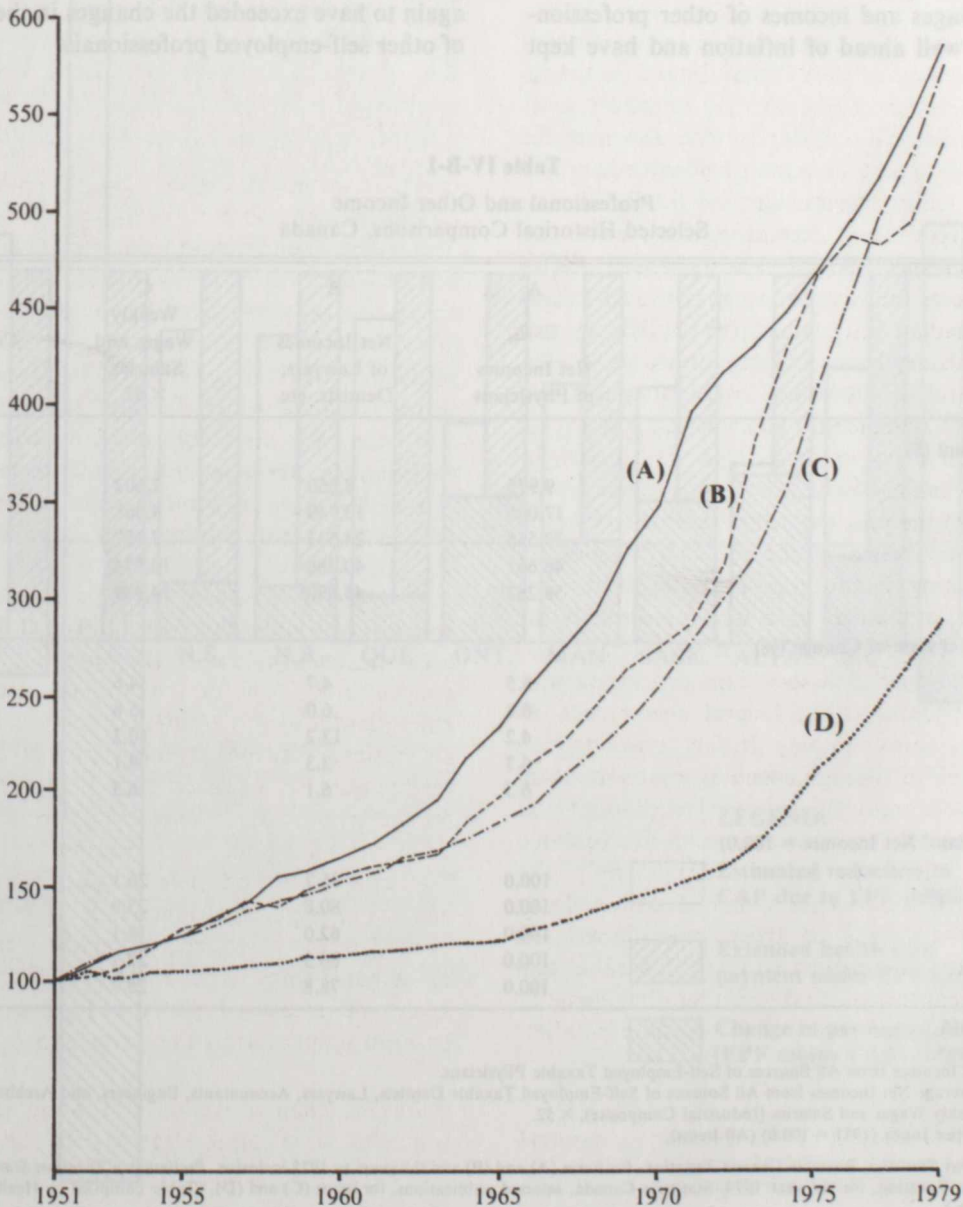


FIGURE IV-B-2

Indices of

- (A) Average net earnings from all sources of self-employed Canadian Physicians;
- (B) Weighted average net earnings from all sources of self-employed Lawyers, Dentists, Accountants, Engineers and Architects;
- (C) Average weekly wages and salaries (Industrial composite);
- (D) Consumer price index, all items.

1951 = 100



Note: 1979 Data for items (A) and (B) are preliminary

Source: Health and Welfare Canada.