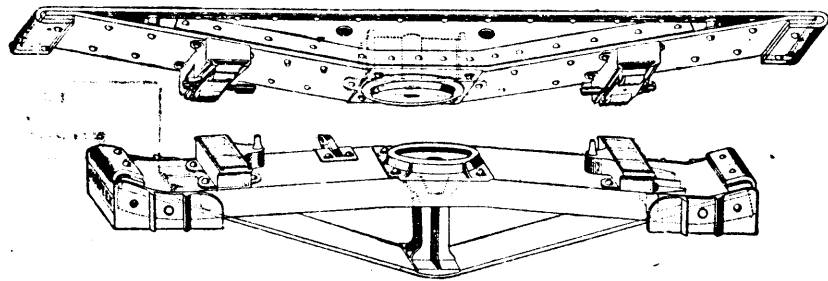


**S
I
M
P
L
E
X**



BRAKE BEAMS



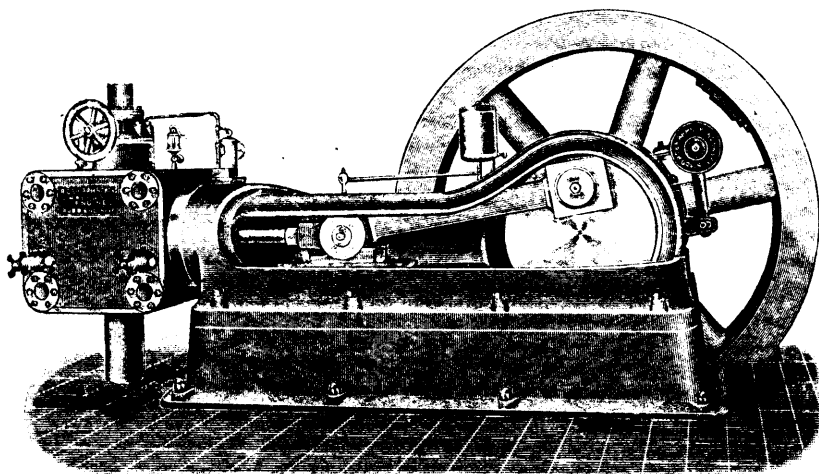
SUSEMIHL FRICTIONLESS SIDE BEARINGS

The **SIMPLEX RAILWAY APPLIANCE
CO. OF CANADA, Limited.**

**OFFICE AND WORKS - ST. HENRI DE MONTREAL
NEW YORK OFFICE-42 BROADWAY**

**B
O
I
L
E
R
S**

A Fine Steam Plant



“I will say without qualification that it is as fine a boiler and engine plant as I have ever had the pleasure of seeing for its size. The engine was working without heating and absolutely without any noise. I wish to congratulate you on your success in building this class of engine and hope that we may have pleasure in dealing with you again.”

The above refers to a 350 horse power Robb-Armstrong Corliss engine and two 175 horse power Robb-Mumford boilers installed by us.

Robb Engineering Co., Ltd., Amherst, N.S.

AGENTS—Wm. McKay, 320 Ossington Avenue, TORONTO. Watson Jack & Company, Bell Telephone Building, MONTREAL.
J. F. Porter, 355 Carlton Street, WINNIPEG